



Fairfax County Park Authority
**Blue-Green Algae
Bloom Response**



BE AWARE OF ALGAL MATS

Toxic Algal mat may be present in this water

Mats can be attached to the bottom, detached and floating,
or washed up on shore

IF YOU SEE ALGAL MATS



Do NOT let children
or adults touch, eat, or
swallow any algal mats



Do NOT let dogs eat
algal mats or drink
from the water

Report Algae Blooms Online: www.SwimHealthyVA.com



It is safe to eat properly cooked fish caught from waters with an algae bloom.
Thoroughly clean the fish, discarding the carcass and guts and washing hands and
surfaces with soapy water is advised.

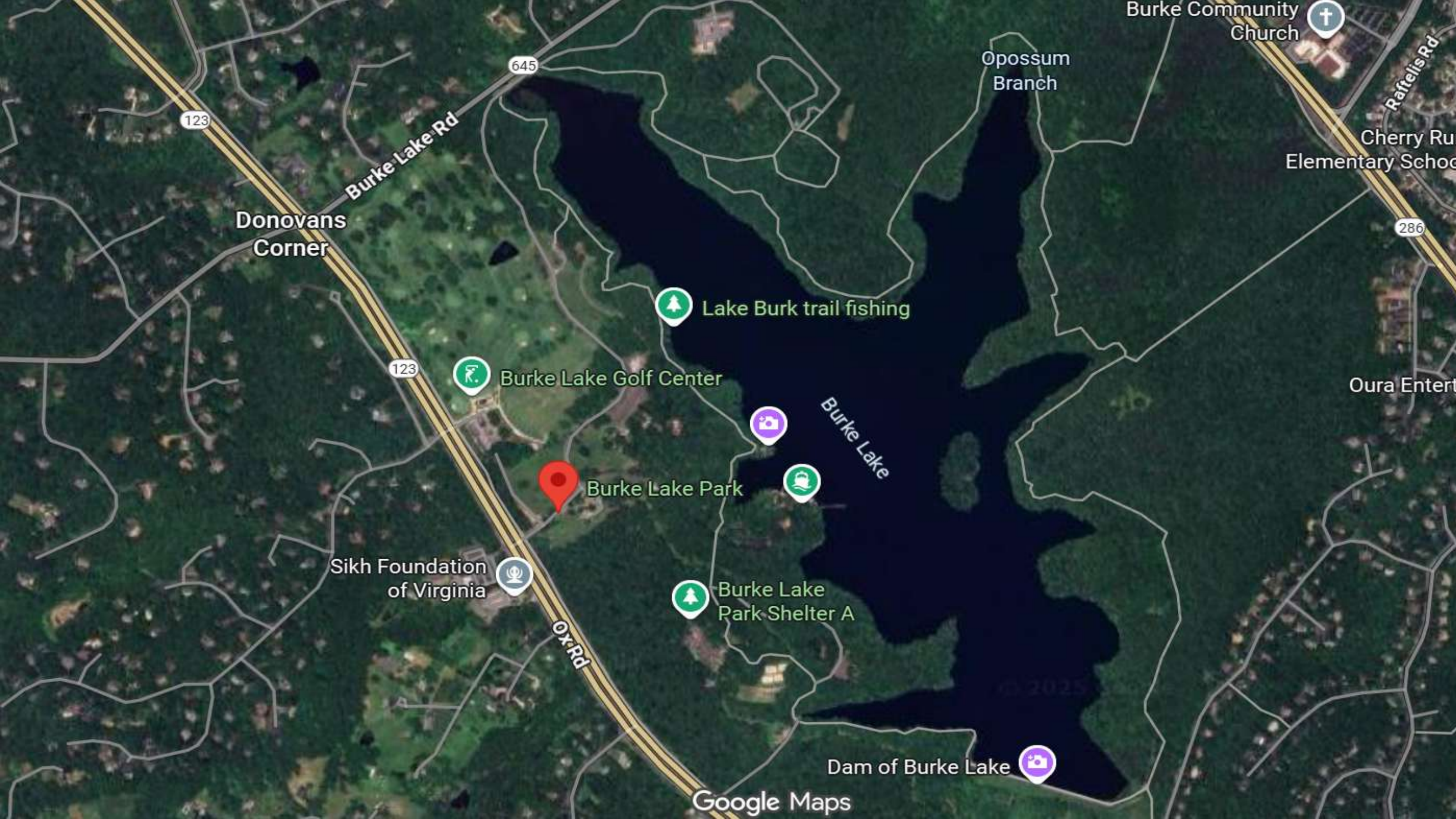
For local information, visit: <https://www.fairfaxcounty.gov/parks/updates>

VDH VIRGINIA
DEPARTMENT
OF HEALTH

Fairfax County Park Authority

Fairfax County parks serve as critical ecological islands within one of Virginia's most densely populated regions:

- 23,000+ acres of parkland across 420+ parks
- Growing urbanization creates unique management challenges
- Many stormwater ponds, amenity ponds, and farm ponds
- Bluegreen algae blooms becoming an increasing concern



123

645

286

123

Donovans
Corner

Sikh Foundation
of Virginia

Burke Community
Church

Cherry Run
Elementary School

Opossum
Branch

Oura Entert

Burke Lake Rd

Raffell's Rd

Ox Rd

Burke Lake

Lake Burk trail fishing

Burke Lake Golf Center

Burke Lake Park

Burke Lake
Park Shelter A

Dam of Burke Lake

Google Maps

© 2025



Fairfax County Park Authority's Post



Fairfax County Park Authority

June 12 ·

WARNING: HARMFUL ALGAE BLOOM IN PROGRESS

A blue-green algae bloom has been identified at Burke Lake.

- Avoid contact with the water. This includes swimming, wading, and letting pets enter the lake.
- Keep pets away from the shoreline and do not allow them to drink from the lake.
- Individuals with respiratory sensitivities should avoid prolonged exposure near the water.

Avoid contact with the water until further notice. Blue-green algae can produce harmful toxins that pose serious health risks to people and animals.

[Fairfax County Park Authority](#) is monitoring the situation and coordinating with state and local health officials.

Please check Parks Alert webpage for updates before visiting: <https://bit.ly/3x7CrP7>

Additional information can be found on the [Virginia Department of Health](#) website: <https://bit.ly/45Z3oUi>



BURKE LAKE

ACCESSIBLE FISHING PLATFORMS



After Hours
Emergency
Contact
Night Watch
at 703-220-6627
If Police/Fire/Rescue
is Needed Dial 911

A COOPERATIVE PROJECT
OF THE

VIRGINIA DEPARTMENT OF
GAME & INLAND FISHERIES

AND THE
FAIRFAX COUNTY PARK AUTHORITY

NOTICE
KEEP THE "WILD"
IN WILDLIFE.
FEEDING DUCKS &
GEESE PROHIBITED.



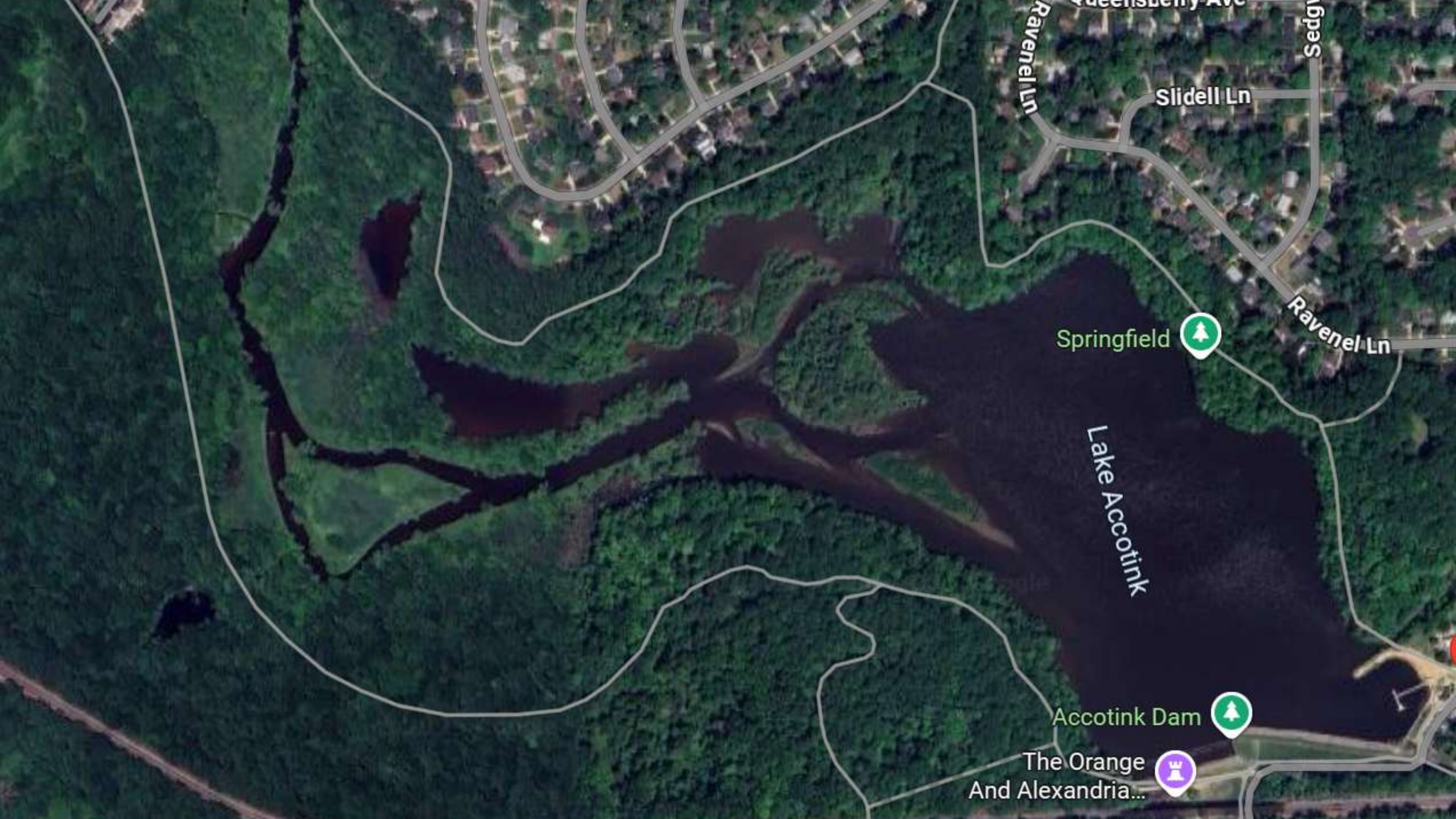
JUNE 1996



X #DMVZone



FAIRFAX COUNTY WARNS OF HARMFUL ALGAE BLOOM



Ravenel Ln

Queenberry Ave

Sedgwick Ln

Slidell Ln

Springfield



Ravenel Ln

Lake Accotink

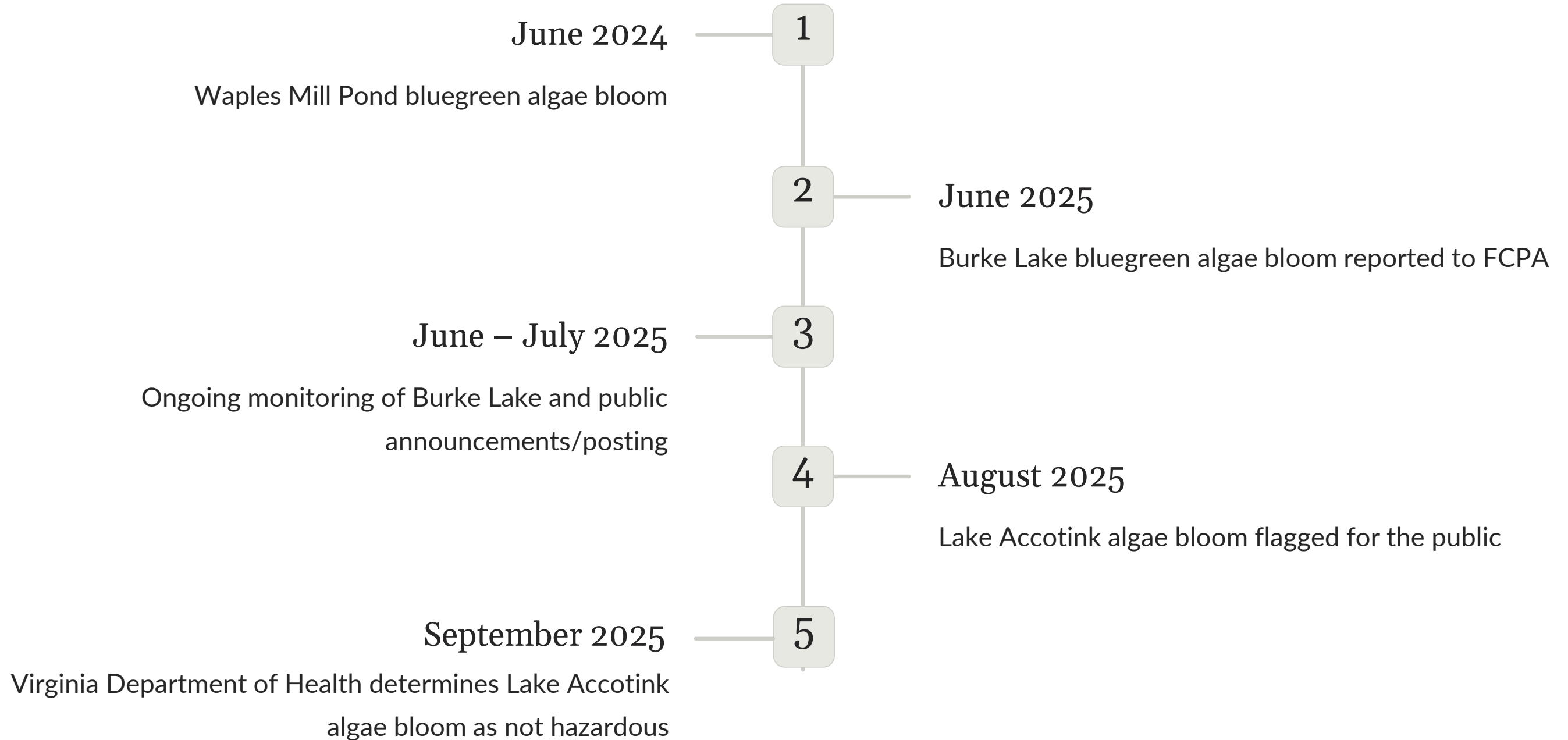
Accotink Dam

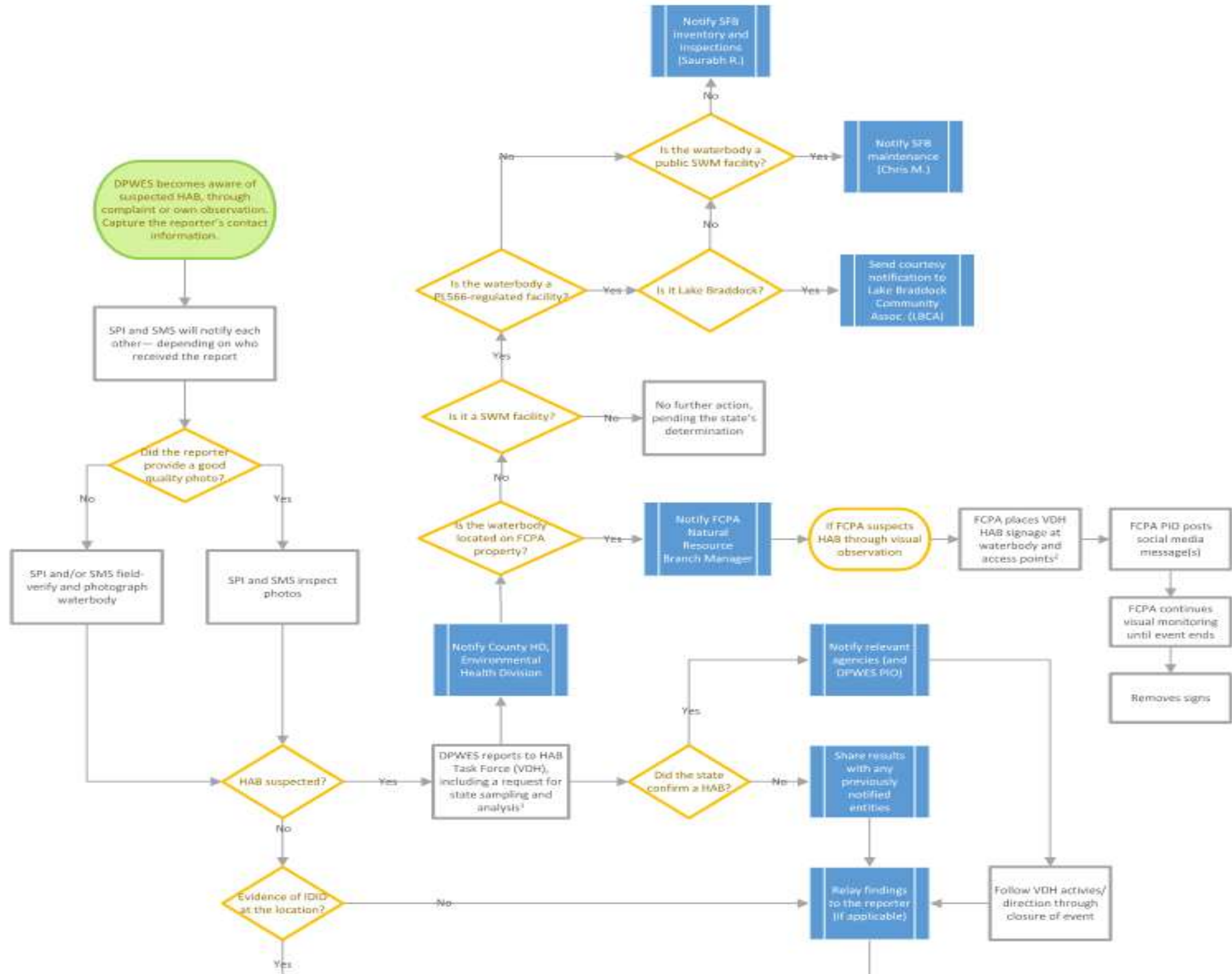


The Orange
And Alexandria...



Recent Bluegreen Algae Blooms on FCPA Property







John Burke

Fairfax County Park Authority

John.burke2@fairfaxcounty.gov

