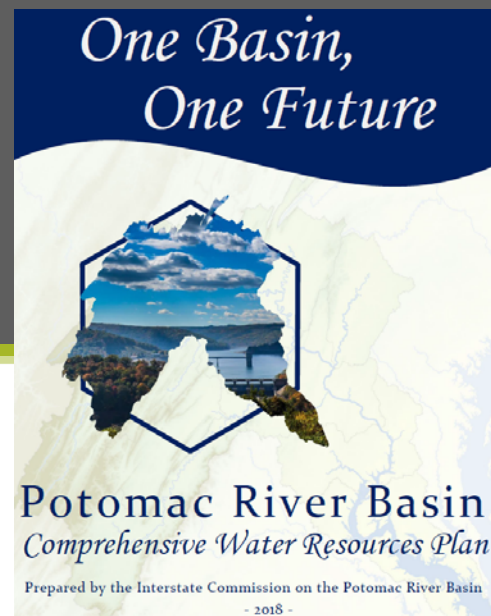


## Potomac Basin Comprehensive Water Resources Plan



Interstate Commission  
on the  
Potomac River Basin



Plan cover photo by Robyn Phillips Photography.

The ICPRB is proud to announce the completion of the first ICPRB Potomac River Basin Comprehensive Water Resources Plan. Commission staff would like to thank the stakeholders who contributed to the development of this plan. Without the commitment of stakeholders from diverse water sectors and geographic regions, it would not have been possible to cover the breadth and depth of materials that the plan includes.

The image on this slide shows the cover of the draft plan. Select pages are copied from the document throughout these slides to provide a general sense of the look and feel of the document.

## Outline

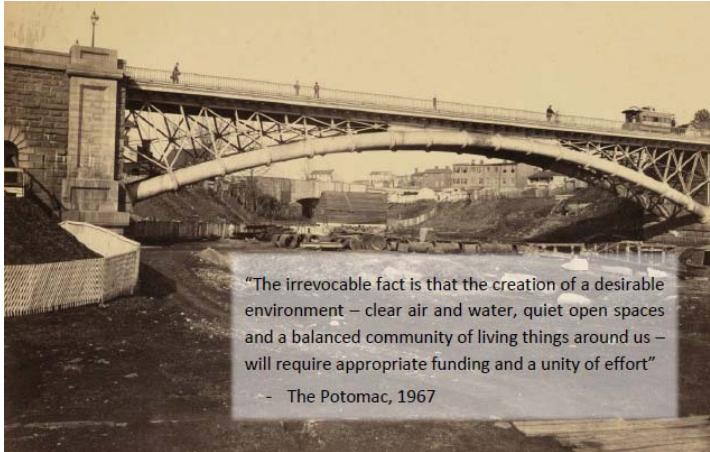


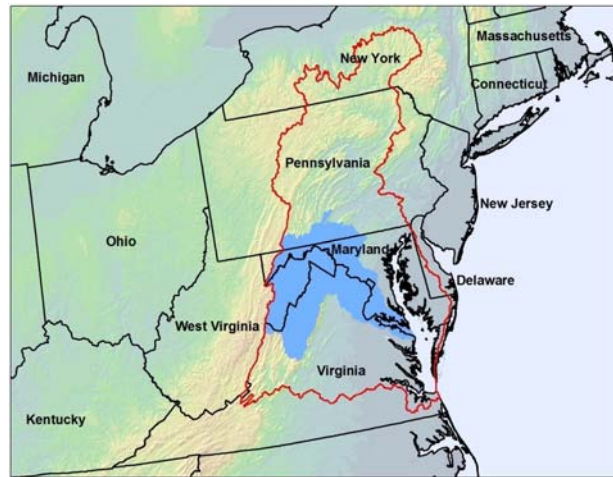
Photo from the Library of Congress.

- Potomac basin
- ICPRB
- Website
- Plan Content
- Timeline

These presentation slides provide information on the Potomac basin, ICPRB, where you can access the basin-wide comprehensive plan, what's included in the comprehensive plan, and the implementation timeline.

## Potomac Basin

- 14,670 sq. mi.
- 4 states and DC
- 5 physiographic provinces
- 6.17M basin residents, 80% in DC metro area



Map produced by J. Duncuigeen, ICPRB

The Potomac basin is shown here in light blue within the broader Chesapeake Bay watershed (outlined in red). The basin includes approximately 14,670 square miles over portions of Pennsylvania, West Virginia, Virginia, Maryland and the entire District of Columbia. It also includes large expanses of federal lands, including parks, forests, military bases and other facilities. Terrain in the basin is highly varied and includes mountains, rolling hills, and low-lying plains. According to the 2010 census, more than 6-million people live in the basin, most in the Washington metropolitan area.

## Interstate Commission on the Potomac River Basin (ICPRB)

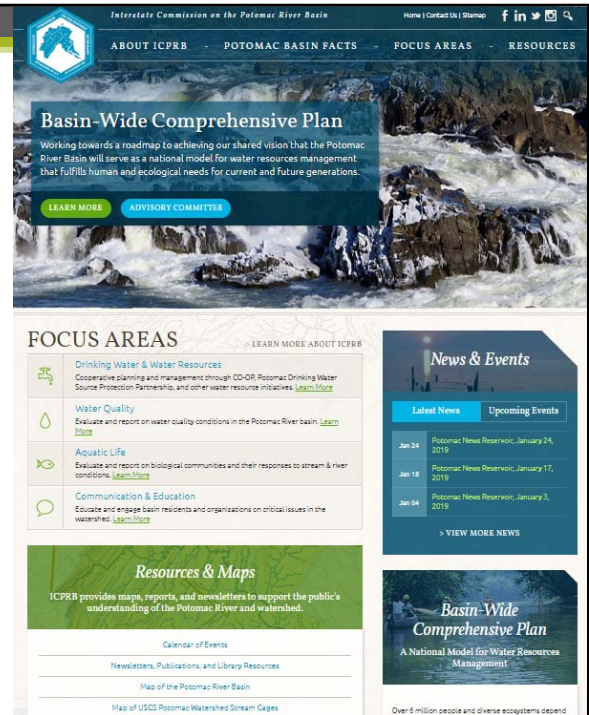
- Established by congress in 1940
- Non-regulatory agency of the states
- Initiated by interstate compact
- Ideally situated for interstate planning



*Mission: "protect and enhance the waters and related resources of the Potomac River basin through science, regional cooperation, and education"*

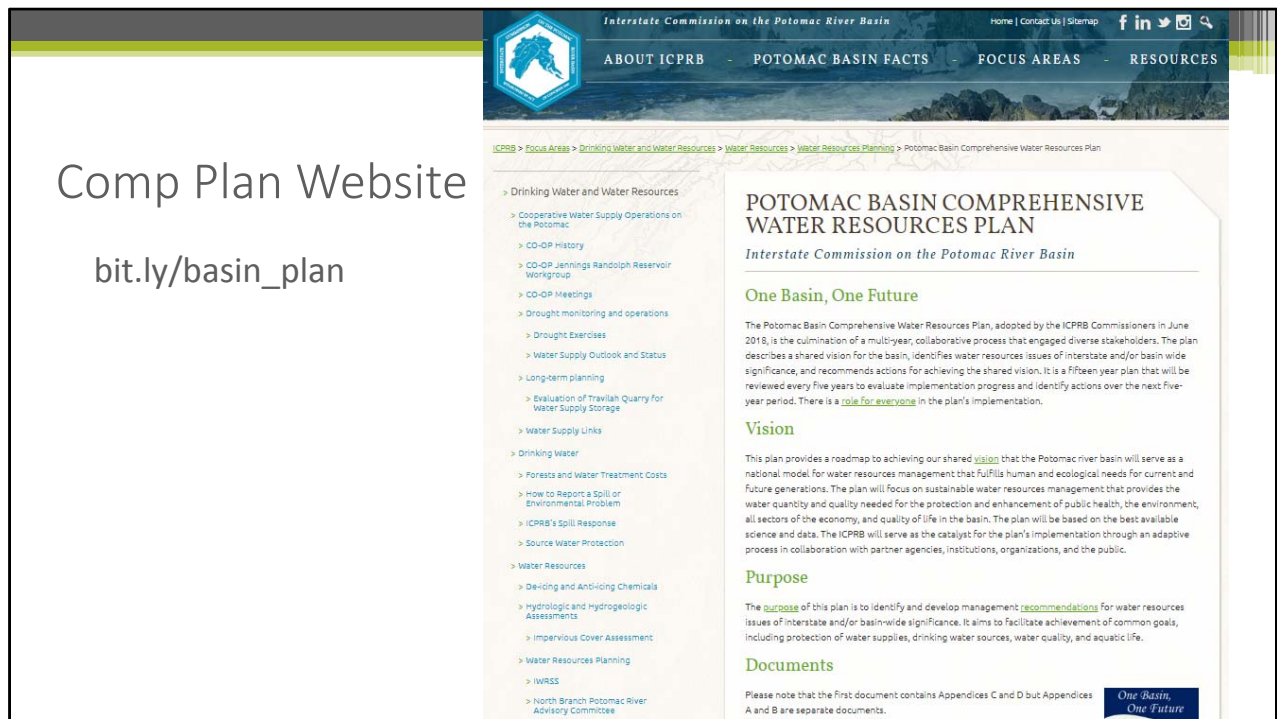
Check Out the Website!

[www.potomacriver.org](http://www.potomacriver.org)



There are several easy ways to electronically access the basin-wide comprehensive plan. The first is by heading to the ICPRB home page ([potomacriver.org](http://potomacriver.org)). The top banner of the page rotates through several announcements, one of which is the comprehensive plan. The comprehensive plan notice on the top banner includes a clickable button to access the comp plan page. Also on the ICPRB home page is a static comp plan box on the bottom right with a clickable button to access the comp plan page.

The comp plan web page is also directly accessible by searching “ICPRB comp plan” using an internet browser.



The comp plan web page is also directly accessible via the short url shown on this slide.

This is a screen shot of the comprehensive plan web page. The top portion of the page contains text that describe the plan, vision, and purpose. A number of documents are available for download at the bottom of the page.

# Ready-to-Use Documents

## Documents


Please note that the first document contains Appendices C and D but Appendices A and B are separate documents.

- [1. Potomac River Basin Comprehensive Water Resources Plan \(20MB\)](#)
- [2. Appendix A: Final Report of the Advisory Committee \(0.5MB\)](#)
- [3. Appendix B: Annotated Bibliography by Challenge Area \(0.5MB\)](#)




## Quick Access


### Executive Summary



### Map




### Simple Actions We Can do to Make a Difference




### Recommendations by Challenge Areas



### Vision



### Purpose



The Documents section of the page contains a downloadable version of the plan (~20MB). Two of the appendices are also available for individual download. There are also Quick Access downloads for the Executive Summary, the basin map featured in the front of the plan, and four user-friendly, one-page tear outs from the plan.



## Major Sections of Plan Document

- Introductory Materials
- Potomac Basin Description
- Challenges and Recommendations
- Implementation
- Strategy for Adaptive Implementation



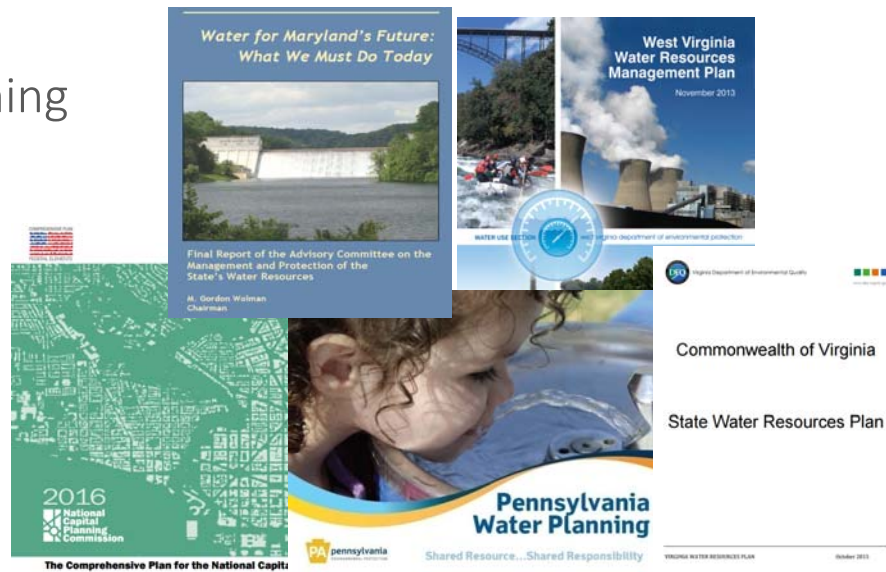
Photo by John Wirts.

Now that you know where to get the plan, the next couple of slides discuss what's included in the plan. The major sections of the plan are listed on this slide. Each of these will be discussed in turn.

The introductory materials of the plan include topics such as a history of planning in Potomac, background on ICPRB, plan partners, the purpose of the plan, the approach used to develop the plan, benefits of implementation, a description of the planning process, stakeholder involvement in the plan's development, and the plan's regulatory framework. The first of these – history of planning in the Potomac will be discussed on the next slide.



## Planning



Planning for the region's water future has been underway for some time through the development of regional, state, and local comprehensive plans. The purpose of this plan is to build on existing planning efforts in the basin by providing interstate/basin-wide context, and to serve as a roadmap for ICPRB – and perhaps others' - activities.

## Stakeholder Participation

- Advisory committee
  - Provide input throughout the planning process
- Broad public participation
  - Extensive email distribution list
  - Other ICPRB electronic distribution lists
  - Website

Photo by Renee Bourassa.



Stakeholder involvement, including the establishment of an advisory committee and broad public participation, was key for the successful development of this plan.

The advisory committee consisted of approximately 2 dozen representatives from diverse organizations that cover different topic areas and geographic areas of the basin. The committee met 7 times between September 2016 and March 2018 (5 in person meetings, 2 via teleconference).

In addition to the advisory committee, ICPRB worked to engage the public more broadly as well through an extensive email distribution list (nearly 200 individuals), other electronic distribution lists that the ICPRB communication section maintains, and through communication on social media and the website.

## Vision



This plan provides a roadmap to achieving our shared vision that the Potomac River basin will serve as a national model for water resources management that fulfills human and ecological needs for current and future generations. The plan will focus on sustainable water resources management that provides the water quantity and quality needed for the protection and enhancement of public health, the environment, all sectors of the economy, and quality of life in the basin. The plan will be based on the best available science and data. The ICPRB will serve as the catalyst for the plan's implementation through an adaptive process in collaboration with partner agencies, institutions, organizations, and the public.

Photo by Jim Palmer.

A major product of the advisory committee, was a shared vision statement for the basin. This provides a basis for action. All recommendations are working towards achieving (or getting closer to achieving) this shared vision for the basin.

This page comes directly from the plan to provide a sense of the plan's look and feel.

## Purpose

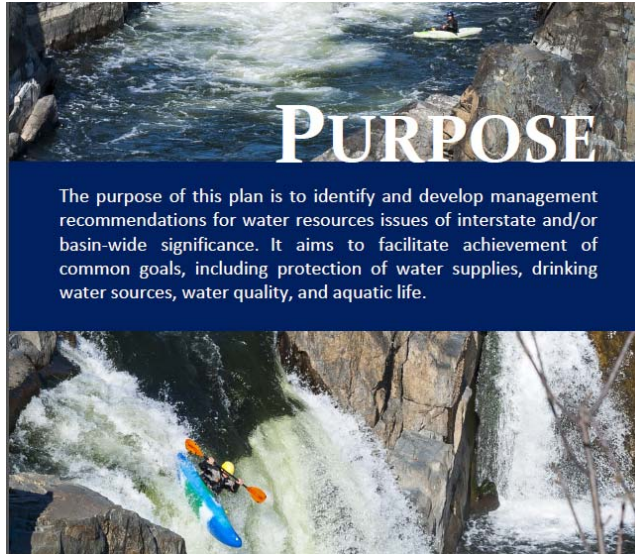


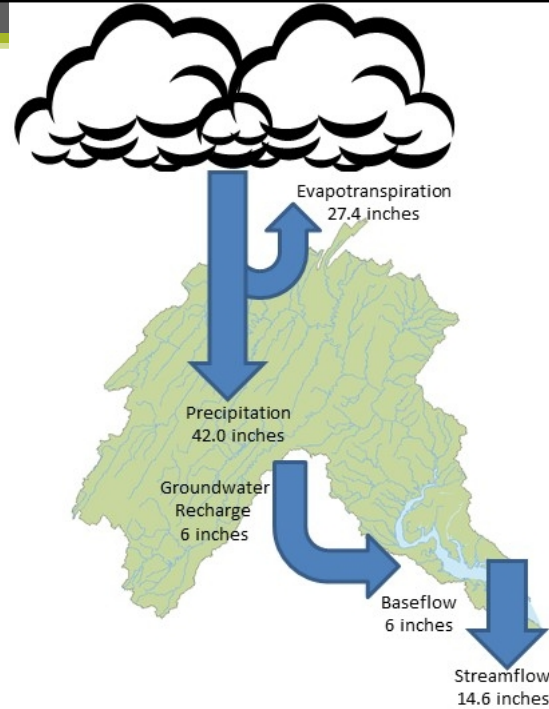
Photo by Jim Palmer.

This slide shows the purpose for the plan, as developed by the advisory committee.

This image comes directly from the plan to provide a sense of the plan's look and feel.

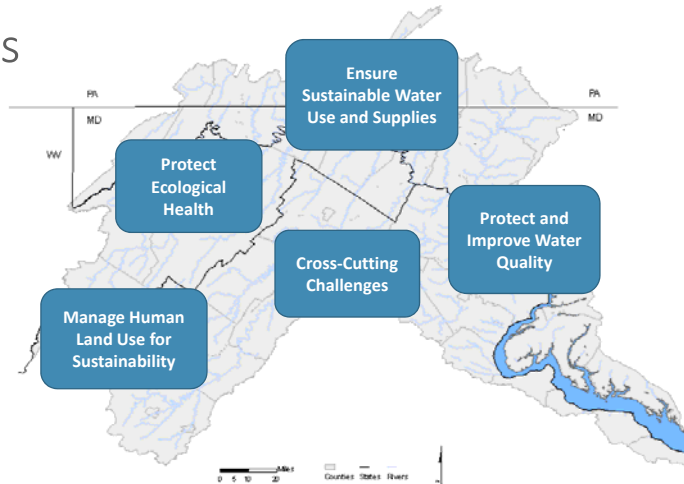
## Basin Description

- Physiography
- Hydrology
- Population
- Land Use
- Water Use
- Water Quality
- Aquatic Life



The plan includes a description of physiography, hydrology, population, land use, water use, water quality, and aquatic life in the basin to develop a common understanding of the basin characteristics. Subsequent sections of the plan build on this content to evaluate challenges (given these conditions) and propose what can be done to address them.

## Challenge Areas



Challenges to sustainable water resources management in the basin were grouped into five major categories. The five challenge areas are ensuring sustainable water use and supplies, protecting ecological health, managing human land use for sustainability, protecting and improving water quality, and cross-cutting challenges. The cross-cutting challenges area will be discussed in more detail on the next slide.

## Cross-Cutting Challenges

Cross-cutting themes that transcend any one particular challenge area

Floods and Droughts



Occoquan Reservoir during 1960s drought.

Climate Change

Water-Energy Nexus

Source Water Protection



Oil spill on the Anacostia River, early 1990s.

While all of the plan's challenge areas are interlinked, the cross-cutting challenges are so overlapping that they were discussed independently in the plan. These include floods and droughts, climate change, the water-energy nexus, and source water protection.



## Recommendations

### ACTION ITEMS

#### Simple Actions We Can Do To Make a Difference



##### EVERYONE

- Pick up after your pet
- Leave no trace
- Properly dispose of pharmaceuticals
- Minimize use of deicing salts

##### KIDS

- Take care to close faucets tightly after each use
- Tell a teacher or parent if you see a water leak or pollution entering a waterway
- Volunteer with an adult to plant trees, monitor water quality, or pick up trash
- Get involved in your community



##### HOMEOWNERS

- Regularly pump your septic tank
- Properly dispose of household chemicals
- Conserve water by fixing leaks and replacing old toilets, dishwashers, and washing machines
- Use native, drought-tolerant species when landscaping

##### NON-PROFIT/BUSINESS

- Participate in local land-use planning
- Obtain a green business certification
- Promote environmentally sound decision-making by clients and customers



##### AGRICULTURE

- Keep cows out of streams
- Install and/or protect vegetated buffers
- Talk to your state about financial incentives for new equipment, planting trees, and other conservation techniques
- Plant a cover crop

##### GOVERNMENT

- Promote rain gardens, green infrastructure, and low impact development
- Encourage environmentally friendly landscaping
- Promote community wastewater treatment rather than individual septic systems
- Conduct contingency planning to respond to emergencies

Recommendations are provided in the plan that lay out next steps in achieving our shared vision for the basin. The recommendations come in two forms: “simple actions we can do to make a difference” (this slide) and specific recommendations for each challenge area (next slide). The “simple actions” are designed for anyone who reads the plan and is inspired to take action. The list includes ready-to-go actions that are divided up by stakeholder type (e.g. kids, homeowners, businesses).

# Recommendations



RECOMMENDATIONS BY  
Challenge Areas

ENSURE  
SUSTAINABLE  
WATER USES  
AND SUPPLIES

- Report on basin-wide water uses, projected demands, and consumptive demands
- Conduct additional studies on water uses that fall below state water reporting thresholds
- Develop an inventory of roles, responsibilities, and areas of authority and discuss how effectively current programs and activities are being carried out
- Pursue a range of complementary actions that would contribute to a more sustainable and resilient water supply

PROTECT AND  
IMPROVE WATER  
QUALITY

- Promote water quality information sharing
- Educate citizens and professionals about water quality in the Potomac basin
- Develop an inventory of roles, responsibilities, and areas of authority and discuss how effectively current programs and activities are being carried out
- Pursue a range of complementary actions that would contribute to protecting and improving water quality

MANAGE HUMAN  
LAND USE FOR  
SUSTAINABILITY

- Research timely land use related information for decision-making
- Effectively disseminate scientific data and information compiled by ongoing research
- Develop an inventory of roles, responsibilities, and areas of authority and discuss how effectively current programs and activities are being carried out
- Pursue a range of complementary actions that would contribute to managing human land use for sustainability

PROTECT  
ECOLOGICAL  
HEALTH

- Share across jurisdictions data, analysis results, and information on successful restoration approaches
- Coordinate across jurisdictions plans and programs that protect ecological value
- Support and coordinate programs that identify, protect, conserve, restore, enhance, and connect natural areas, especially along waterways
- Pursue a range of complementary actions that would contribute to protecting ecological health

This slide shows the specific recommendations for each challenge area. These recommendations are designed more for professional water resource managers as specific next steps to assist in moving towards our shared vision for the basin.

17

## Implementation

- Roles and Responsibilities
- Potential Funding Sources
- Integration with Other Plans

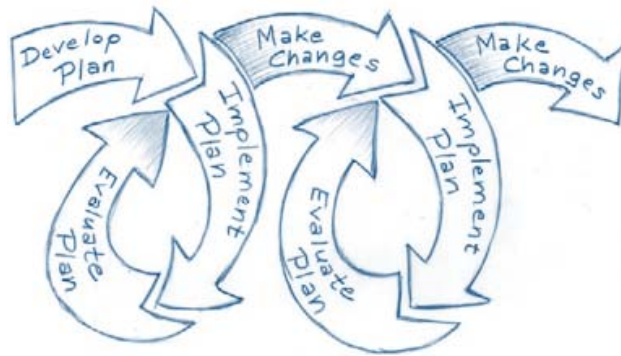


Photo by John Wirts.

The implementation section of the plan includes a discussion of roles and responsibilities of various types of stakeholders in the basin; potential funding sources for implementation activities, and a discussion on how this plan relates to the other water plans in the basin.

## Adaptive Implementation

- Milestones
- Measures of Success
- Review Process
- Communications Plan



Source: EPA

Preparation of the plan document is intended to be only the beginning of the planning process. As adaptive implementation is key for successfully achieving our shared vision for the basin, the plan includes several sections that lay out the adaptive framework. The milestone sections describe actions by challenge area that will be taken in the next two years and in the three years after that. The measures of success are designed as a list of tangible products that can be expected at the end of the first 5-year implementation period. The review process includes a review of milestones and measures of success every 5 years with a review of the complete plan every 15 years. The adaptive implementation section also includes a communications plan that describes how ICPRB will continue to engage stakeholders during the plan's implementation.

## Timeline

- Plan adopted by the Commissioners in June 2018
- Roll-out with stakeholders underway
  - Website, social media, press release, presentations
- Implementation underway, 2- and 5-year goals
- Review of milestones and measures of success in 2023

The plan was adopted by the ICPRB Commissioners in June 2018. Stakeholder roll-out has been underway since then through online outreach (website, social media, etc.), press releases, and presentations. Implementation activities are currently underway and are on schedule to meet 2- and 5-year goals. The first review of milestones and measures of success is scheduled for 2023.

## Questions?



2008 ICPRB River Ramble at Mount Vernon. Photo by ICPRB.

Additional information can be obtained by contacting Heidi Moltz, Associate Director for Water Resources, ICPRB at [hmoltz@icprb.org](mailto:hmoltz@icprb.org) or 301.274.8116.