



# Watershed Connections Conexiones de la Cuenca

## Part 1: Maryland Waterways and Watersheds

## Parte 1: Canales de Maryland y Cuencas Hidrográficas

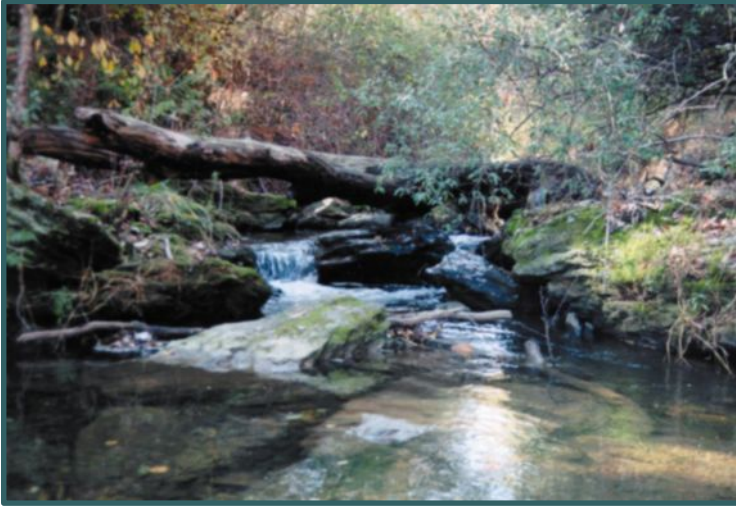
A partnership of the Interstate Commission on the Potomac River Basin and the Patuxent River Park, Maryland-National Capital Park and Planning Commission  
Una colaboración entre Comisión Interestatal de la Cuenca del Río Potomac y el Parque del Río Patuxent (Miembro de la Comisión de Parques y Recreación de Maryland y la Capital Nacional)

Interstate Commission on the Potomac River Basin  
Comisión Interestatal de la Cuenca del Río Potomac  
(301) 984-1908 | [info@icprb.org](mailto:info@icprb.org) | [www.PotomacRiver.org](http://www.PotomacRiver.org)



# Maryland Treasures

## Tesoros de Maryland



1



2



3



4

# Maryland's "Other" Waterways

## Los "otros" canales de Maryland

**Oil, toxins, and road salt**  
**Aceite, toxinas, y sal de carreteras**



5

**Acid Mine Drainage**  
**Desague ácido minero**



6

**Channelization**  
**Canalizaciones**



7

**Erosion and Sedimentation**  
**Erosión y Sedimentación**



8

# Troubled waters...

## Aguas en problemas...



9

- ▶ **46%** of Maryland's Streams are in "Poor" Condition.
- ▶ **46%** de los ríos y arroyos de Maryland's están en condiciones "Pobres".
  - ▶ Only **12%** are in "Good" Condition
  - ▶ Sólo el **12%** están en "Buenas" condiciones

Good Health, Poor Health —  
what does it mean?

Buena Salud, Mala Salud —  
¿Qué significa?

# Healthy streams have... Arroyos sanos tienen...



Photos: 10, 11, 12, 13, 14, 15, 16

- Plants and trees growing along bank  
Plantas y árboles creciendo en las riberas
- Diverse habitats  
Diversos habitats
- Chemical and physical properties acceptable for aquatic life  
Propiedades físicas y químicas aceptables para la vida acuática
- Safe water for human recreation  
Agua para la recreación humana

# What makes an “unhealthy” stream? ¿Qué son arroyos “enfermos” o “no-saludables”?

## Good Streams Arroyos Saludables

- Plants along the bank  
Plantas en las riberas
- Diverse habitats  
Hábitas variados
- Chemical properties acceptable for aquatic life  
Propiedades químicas aceptables para la vida acuática
- Safe for human recreation  
Seguros para la recreación humana.

**Versus**

## Poor Streams Arroyos No-Saludables

- Lack trees, plants, and shade  
Carecen de árboles, plantas, y sombra
- Lack habitats  
Carecen de hábitats
- Are polluted  
Están contaminados
- Unsafe for public use  
No aptos para el uso público
- Filled with trash and sewage  
Llenos de basura y aguas negras



# Why does it matter?

## ¿Por qué es importante?

- Main source for drinking water  
La fuente principal de nuestra agua de beber





## Why does it matter?

### ¿Por qué es importante?

- Lowers the beauty of a stream  
Le resta belleza a el arroyo
- Deters swimming, wading, boating...  
Prohíbe el uso recreativo como nadar, vadear, pezcar...



# Why does it matter?

## ¿Porqu? nos importa?

- Pollution affects our food supply

La contaminaci?n  
afecta nuestras  
fuentes de alimento



# Why does it matter?

## ¿Porqu? nos importa?

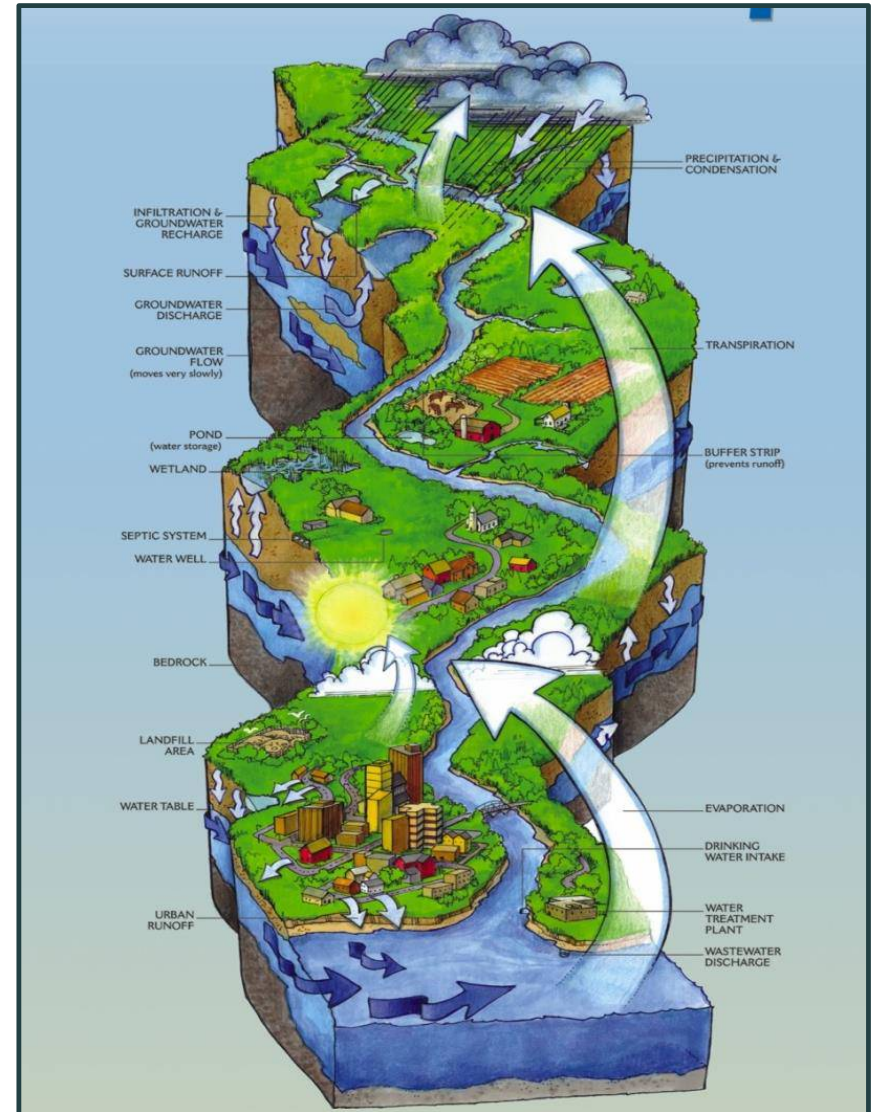


# Protecting Our Water Resources

## Protegiendo nuestras fuentes de agua

To protect and restore water quality, we need a **watershed perspective.**

Para proteger y restaurar nuestra calidad de agua necesitamos *perspectiva de cuenca.*



# What is a watershed?

¿Qué es una cuenca ?



**Watershed:** An area of land where the water drains into a common source, such as a stream, pond, or bay.

**Cuenca:** Un área de tierra en donde el agua se escurre en una fuente común como un arroyo, estanque, o bahía.

A **watershed perspective** looks at how our land use affects our waterways.

Una **Perspectiva de cuenca** explora el cómo el uso de los terrenos afecta nuestros cuerpos de agua.

# Our Chesapeake Bay Watershed

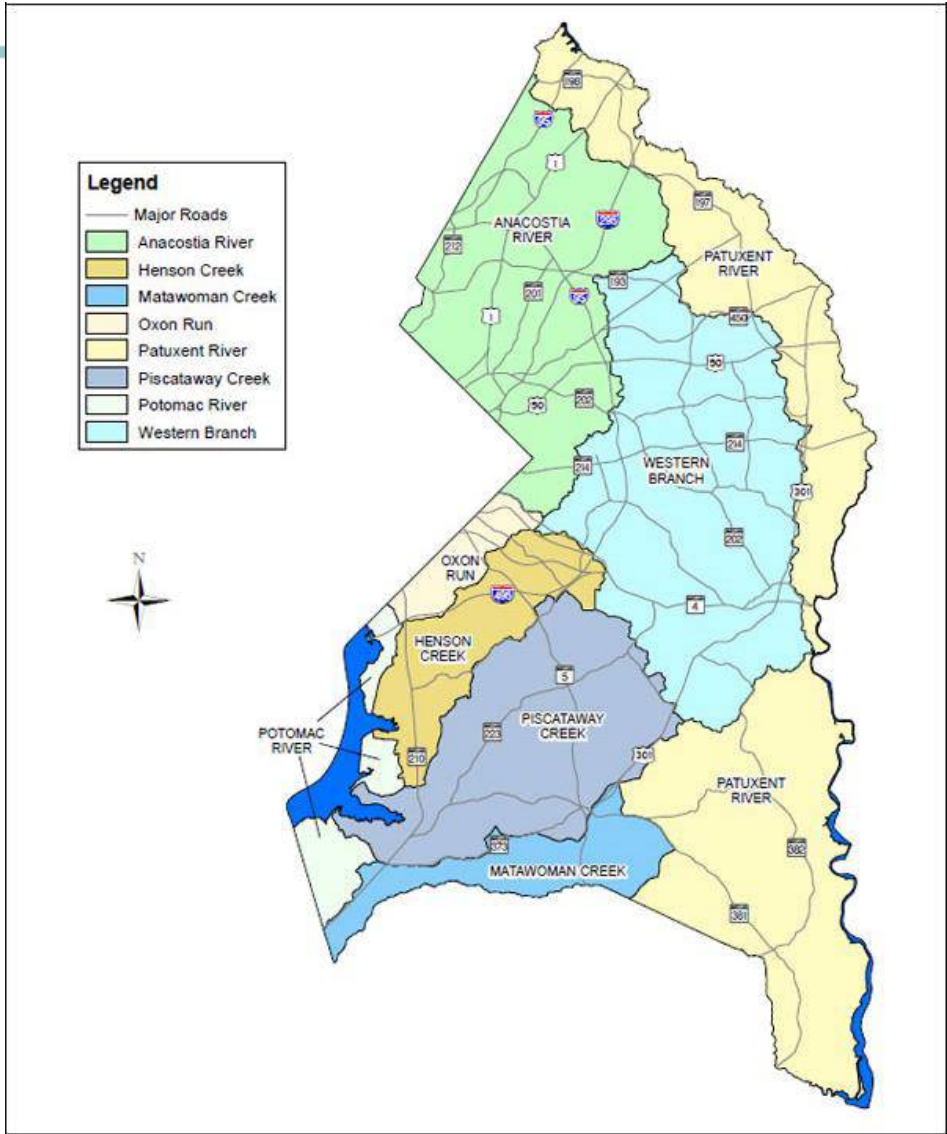
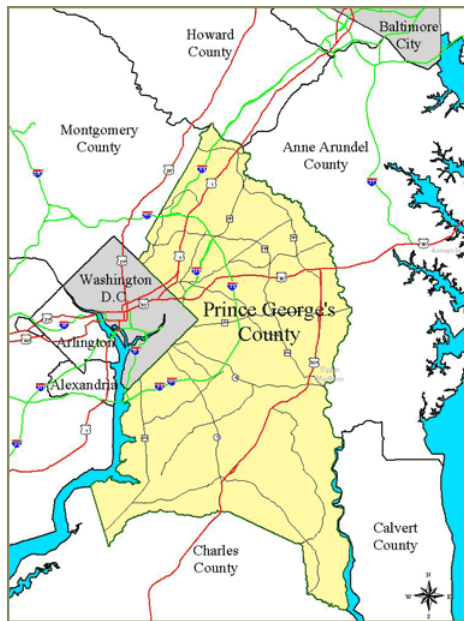
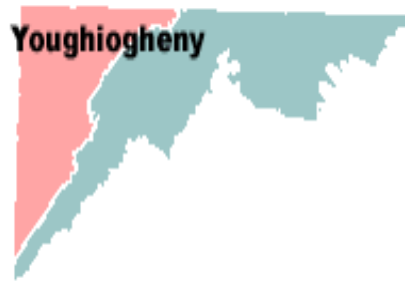
## Nuestra Cuenca de la Bahía del Chasapeake



- Maryland is nested in one of largest watersheds on the East Coast, the Chesapeake Bay drainage basin.  
Maryland está alojada en una de las cuencas más grandes de la costa este, la Cuenca de la Bahía del Chesapeake.
- What other states are part of the Chesapeake Bay Watershed?  
¿Qué otros estados son parte de la Cuenca de la Bahía del Chesapeake?

# Watersheds within watersheds

## Cuencas dentro de cuencas



<http://www.anacostiaws.org/explore/maps>

# True or False?

## ¿Cierto o Falso?

1. A watershed only includes the land surface. **FALSE**  
Una cuenca sólo incluye la superficie terrestre. **FALSO**
2. A watershed is a building for holding run-off water after a rainstorm. **FALSE**  
Una cuenca es un edificio que sirve para almacenar escorrentía después de que llueve. **FALSO**
3. The way land is used in a watershed affects water quality. **TRUE**  
La manera en que usamos los terrenos afecta la calidad del agua. **CIERTO**
4. Everyone lives in a watershed. **TRUE**  
Todo el mundo vive en una cuenca. **CIERTO**
5. Watersheds are drawn on maps according to political jurisdictions. **FALSE**  
Las cuencas se dibujan en los mapas siguiendo jurisdicciones políticas. **FALSO**
6. Some watersheds are hilly; others are relatively flat. **TRUE**  
Algunas cuencas son inclinadas y otras relativamente llanas. **CIERTO**



## Picture References – Incomplete

### Referencias de las fotos - Parcial

1. Northwest Branch, Montgomery County, MD, *Maryland Streams Take a Closer Look*, Maryland Department of Natural Resources, Photo Library, Copyright 1999.
2. Great Falls, MD, *Maryland Streams Take a Closer Look*, MDNR.
3. Patuxent River at Patuxent River Park Overlook, Rebecca Wolf
4. Coastal Plain stream, *Maryland Streams Take a Closer Look*, MDNR.
5. Maryland Streams Take a Closer Look, MDNR.
6. Maryland Streams Take a Closer Look, MDNR.
7. Maryland Streams Take a Closer Look, MDNR.
8. Alan Bull: channelized stream in Anacostia watershed, Cheverly, MD.
9. Maryland Streams Take a Closer Look, MDNR.
10. Background Photo: Maryland Streams Take a Closer Look, MDNR.
11. Gray Tree Frog, John White, Maryland DNR, <[http://www.dnr.state.md.us/wildlife/Plants\\_Wildlife/herps/Anura/GrayTreeFrog.asp](http://www.dnr.state.md.us/wildlife/Plants_Wildlife/herps/Anura/GrayTreeFrog.asp)>
12. Mussels, South Carolina Department of Natural Resources <<http://www.dnr.sc.gov/fish/species/shellfish/index.html>>
13. Brook Trout, Ohio Department of Natural Resources <[http://www.dnr.state.oh.us/Home/species\\_a\\_to\\_z/SpeciesGuideIndex/brooktrout/tabid/6574/Default.aspx](http://www.dnr.state.oh.us/Home/species_a_to_z/SpeciesGuideIndex/brooktrout/tabid/6574/Default.aspx)>
14. Spotted Salamander, John White, Field Guide to Maryland's Salamanders and Newts, [http://www.dnr.state.md.us/wildlife/Plants\\_Wildlife/herps/Caudata/Spotted.asp](http://www.dnr.state.md.us/wildlife/Plants_Wildlife/herps/Caudata/Spotted.asp)
15. Box Turtle, Scott Smith, MDNR.
16. White-tailed Deer, <[http://www.deer-pictures.com/white\\_tailed\\_deer.html](http://www.deer-pictures.com/white_tailed_deer.html)>
17. Maryland Streams Take a Closer Look, MDNR
18. Channelized stream, Alan Bull
19. Little Girl Drinking, *Tweedy Plumbing*. Web. <http://www.tweedyplumbing.com/water-plumbing.html>
20. *Stormwater Regulatory Background*. Photograph. *Arkansas State Highway and Transportation Department*. Web. 08 Feb. 2012. <<http://arkansashighways.com/stormwater/regulations.aspx>>.
21. Distended Menhaden TO BE FOUND
22. Brown Catfish, Lip Lesion, Potomac River, <http://www.fws.gov/chesapeakebay/Newsletter/Spring12/Bullheads/Bullheads.html>
23. Brown Catfish Tail Lesion, Potomac River, TO BE FOUND
24. *Where Can I Watch a Bald Eagle in Flight?* <http://canidoit.org/where-can-i-watch-a-bald-eagle-in-flight>
25. Beaver Stripping Bark from a Twig, National Geographic [http://animals.nationalgeographic.com/animals/enlarge/beaver\\_image.html](http://animals.nationalgeographic.com/animals/enlarge/beaver_image.html)
26. Stonefly Larvae: TO BE FOUND
27. "Our Watershed - Plum Creek Watershed Partnership." *Plum Creek Watershed Partnership*. Web. 08 Feb. 2012. <<http://pcwp.tamu.edu/our-watershed>>.
28. Chesapeake Bay Watershed image, <<http://en.wikipedia.org/wiki/File:ChesapeakeWatershedMap.png>>.
29. Prince Georges County Map, [http://www.princegeorgescountymd.gov/Government/AgencyIndex/DER/ESG/watershed-plan.asp?nivel=foldmenu\(7\)](http://www.princegeorgescountymd.gov/Government/AgencyIndex/DER/ESG/watershed-plan.asp?nivel=foldmenu(7))
30. Prince Georges County Watersheds, [http://www.princegeorgescountymd.gov/Government/AgencyIndex/DER/ESG/watershed-plan.asp?nivel=foldmenu\(7\)](http://www.princegeorgescountymd.gov/Government/AgencyIndex/DER/ESG/watershed-plan.asp?nivel=foldmenu(7))
31. State Major Watershed, MDNR
32. Hydrologic Cycle, James River Association [http://www.relia.net/~thedane/soil\\_water.html](http://www.relia.net/~thedane/soil_water.html)