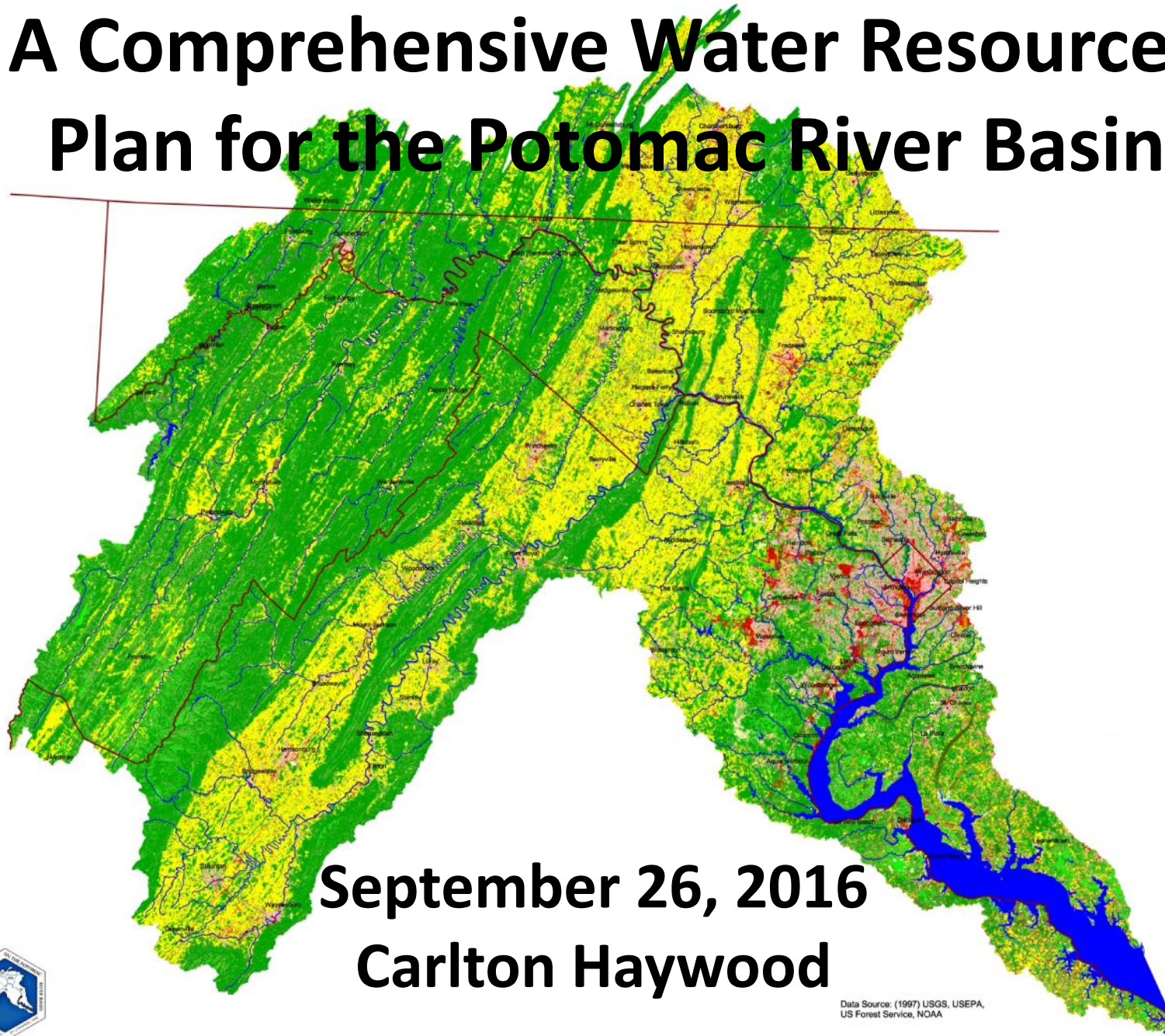


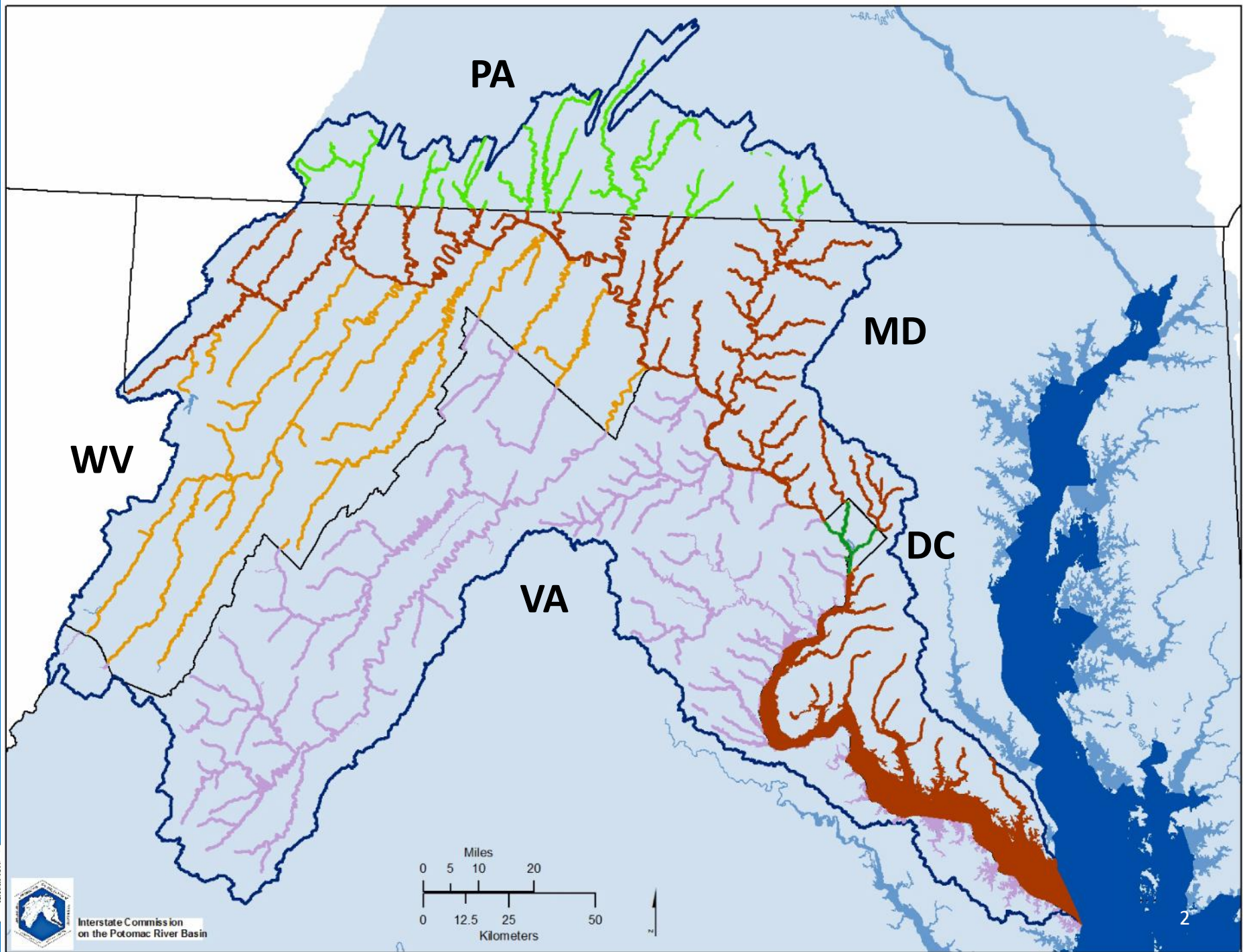
A Comprehensive Water Resources Plan for the Potomac River Basin



September 26, 2016
Carlton Haywood



Data Source: (1997) USGS, USEPA,
US Forest Service, NOAA

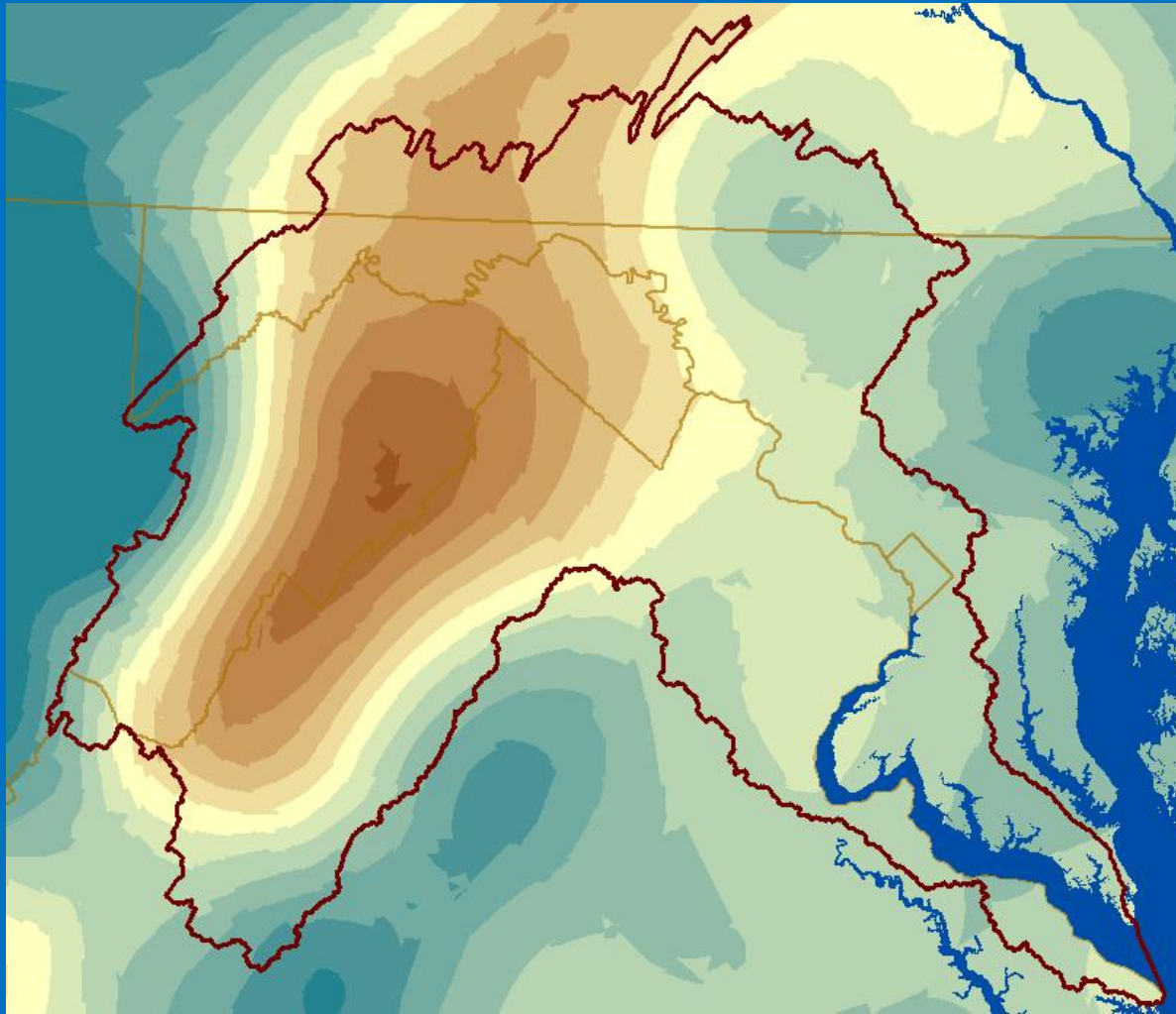


ICPRB

- Interstate Compact approved in 1940 to address severe pollution problems
- Compact amended in 1970 to add responsibility for use, conservation, and development of water resources
- Authorities
 - Investigate issues and problems
 - Inform / Educate public
 - Stimulate action by state / federal agencies
 - Coordinate efforts of the member states



Setting the Stage

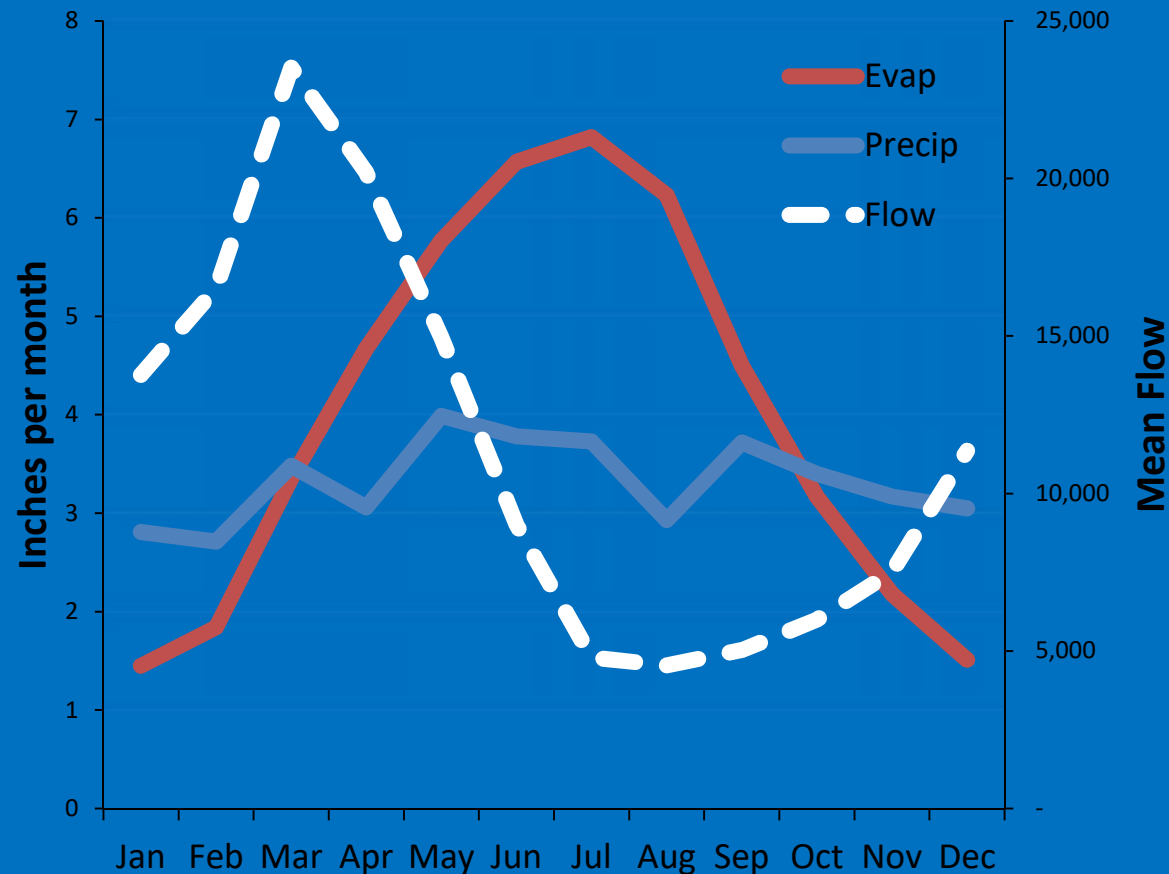


On average, basin is water rich but some areas get more rain than others.

Mean annual precip.
Basin avg.: 42"
Range: 36" – 45"



Setting the Stage



**On average, uniform precip. through year,
but distinct seasonal cycle of water availability**



Setting the Stage



Great Falls
Sep. 1966
100 cfs



Interstate Commission on the Potomac River Basin

Setting the Stage

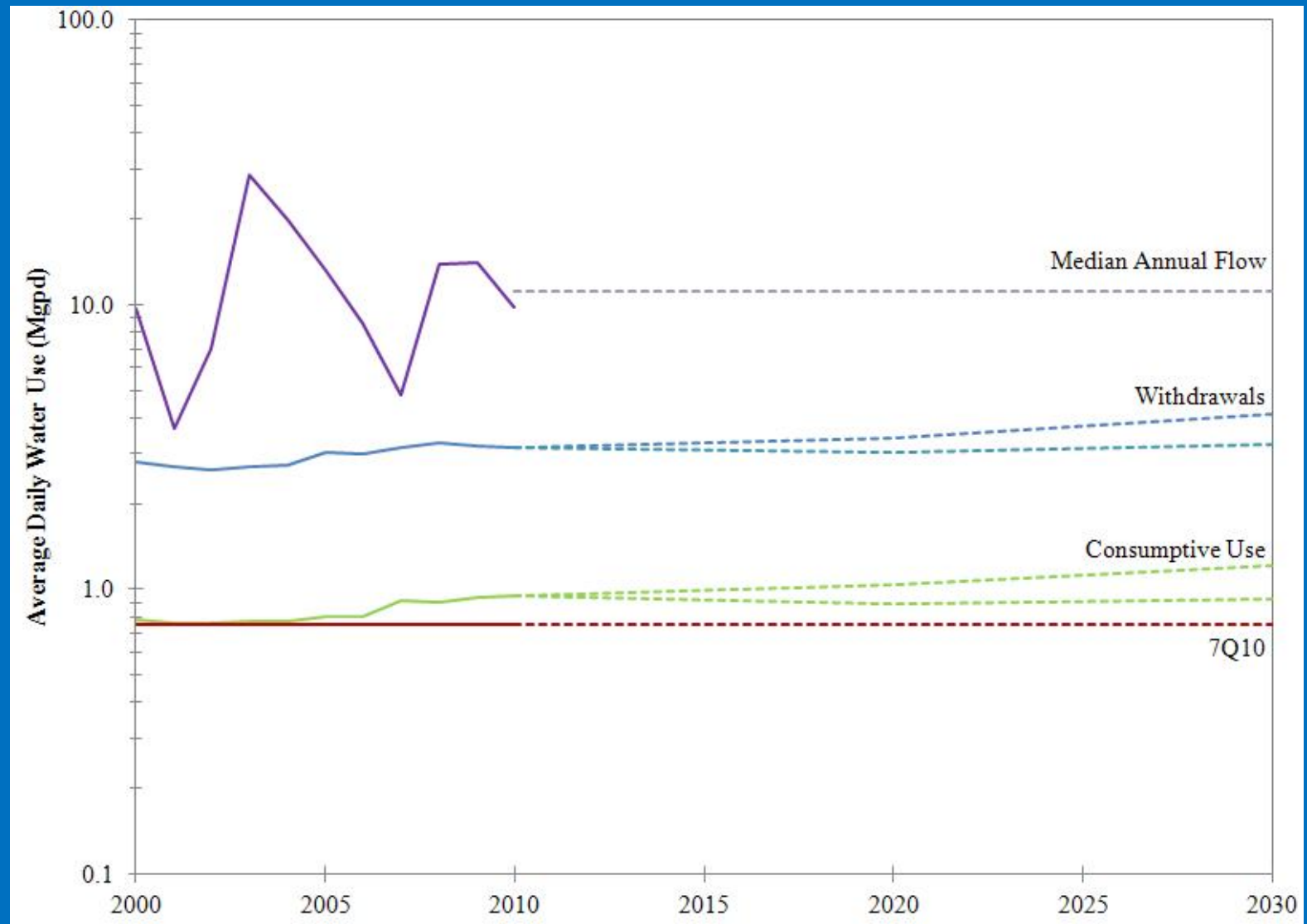


Great Falls
Sep. 2003
123,000 cfs



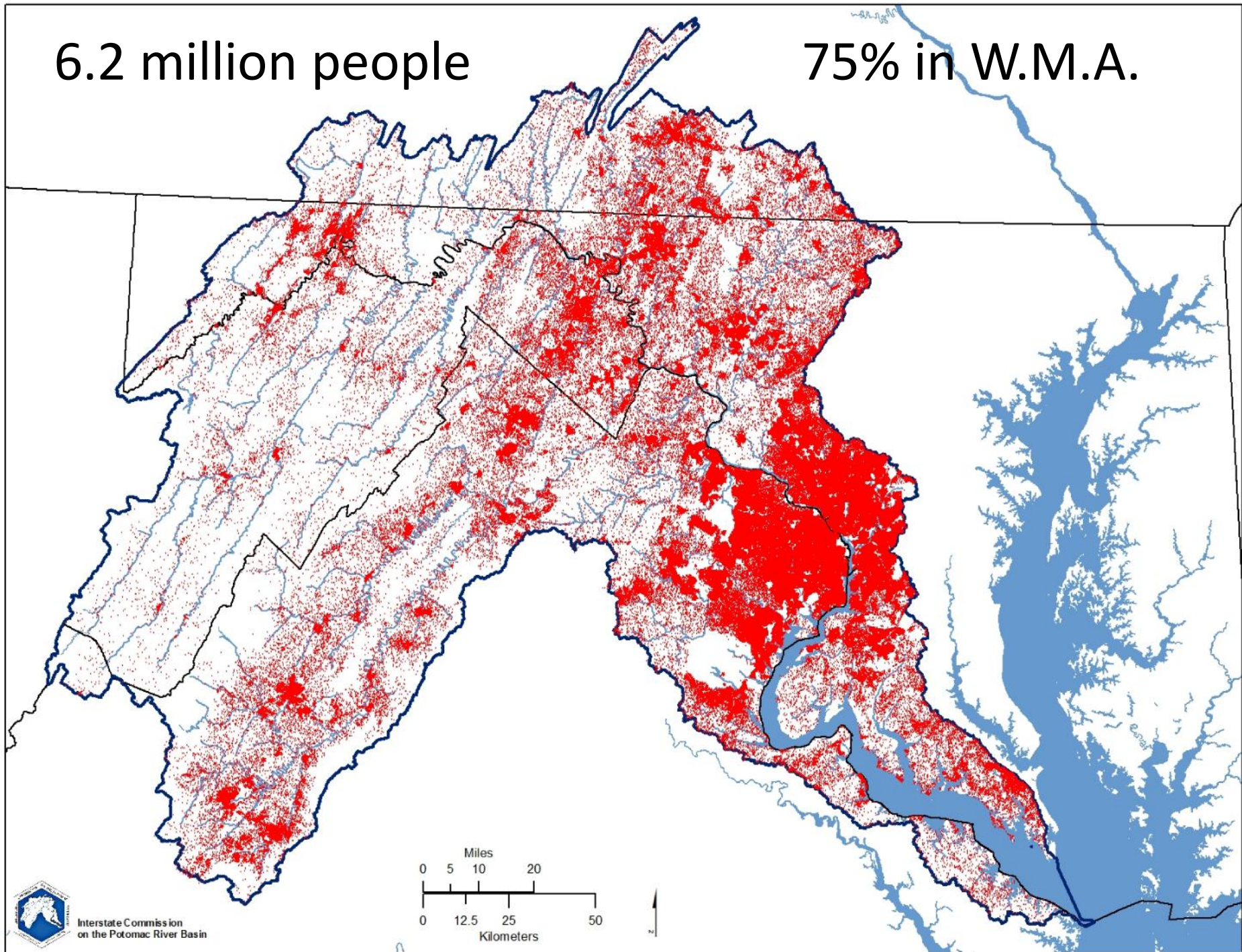
Interstate Commission on the Potomac River Basin

Rock Creek , Adams County, PA



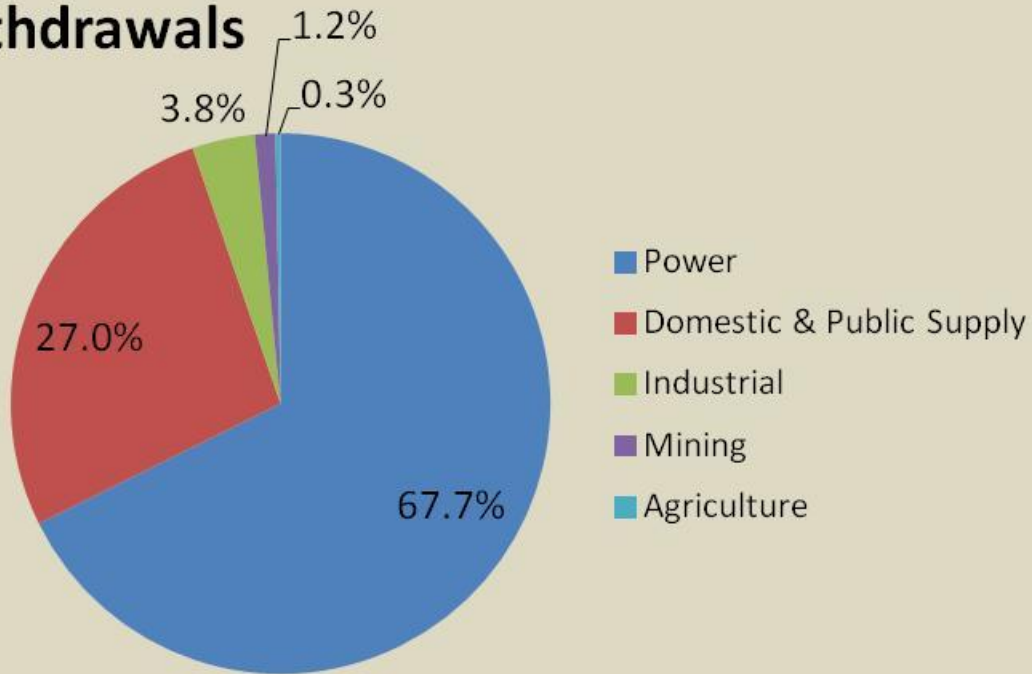
6.2 million people

75% in W.M.A.

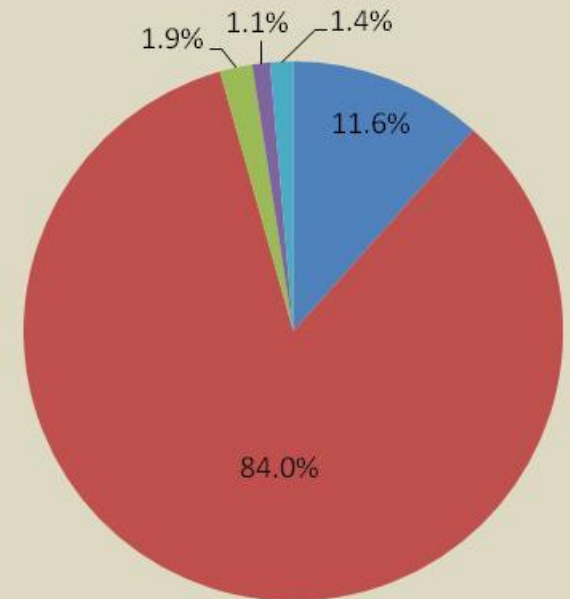


Setting the Stage

Withdrawals



Consumptive Use

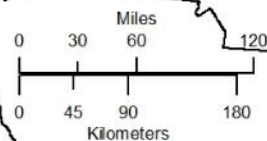


Chesapeake Bay TMDL

Potomac 2nd largest watershed



Interstate Commission
on the Potomac River Basin



Comprehensive Plan Issue Areas

- Climate Change
- Ecological Health
- Floods and/or Droughts
- Human Land Use
- Natural Landscape Features
- Science and Education
- Source Water Protection
- Water Availability
- Water Quality
- Water Use

