

Conditional probability flow alteration – ecology plots
18 Feb 2012

This file contains the conditional probability plots for the final suite of macroinvertebrate and flow metrics used to establish FA-E relationships for the Middle Potomac study area.

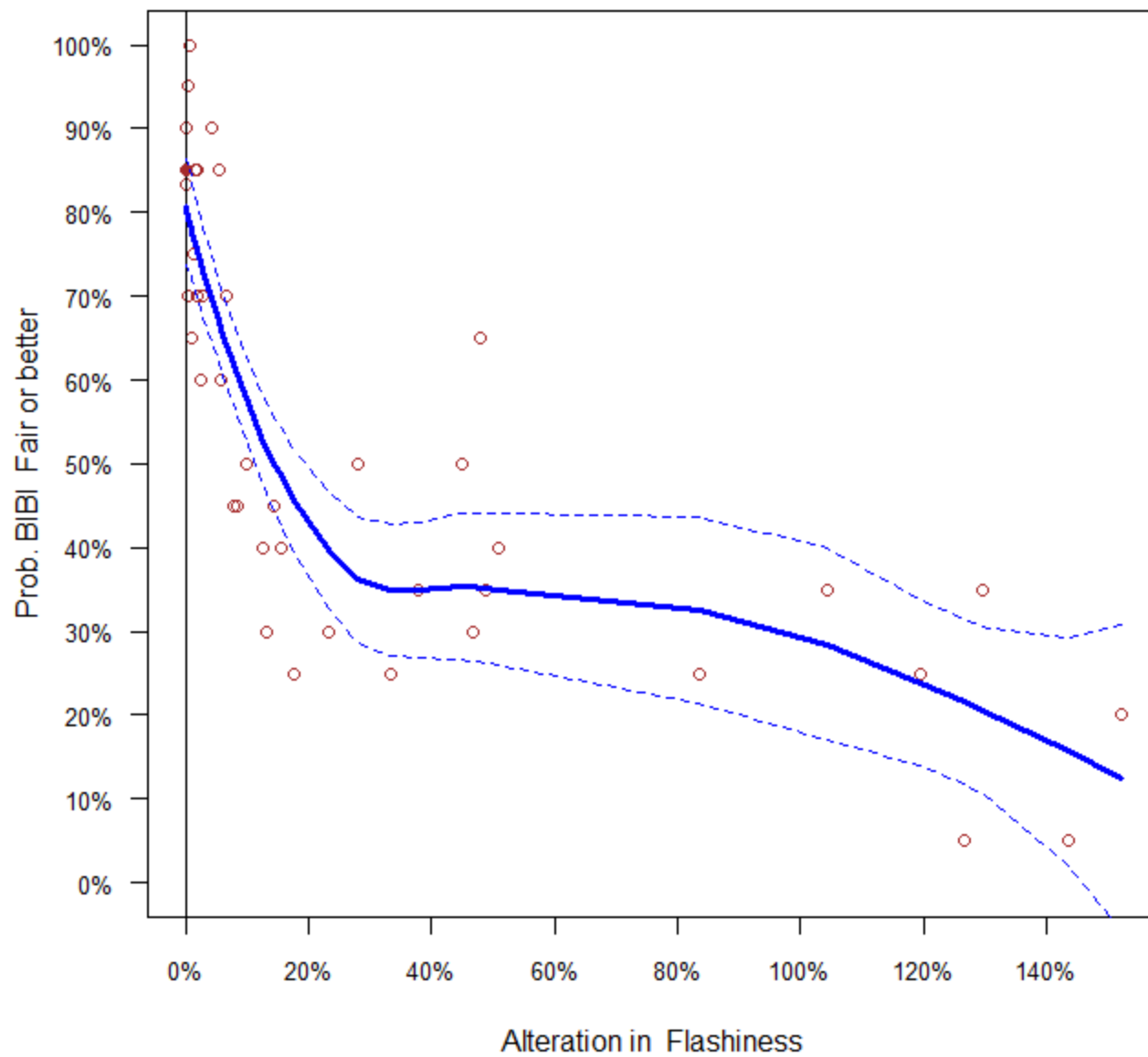
Explanation:

- 1) Y-axis is the probability that a benthic macroinvertebrate sample will have a biometric score of “Fair” or better for a given amount of flow alteration. X-axis is the amount of alteration in the flow metric away from a baseline level.
- 2) Open circle points represent probability for a bin of 20 samples.
- 3) Solid red circle at 0% flow alteration represents the probability of “Fair” or better status for just the set of watersheds that meet reference condition criteria.
- 4) Solid blue line is a LOESS smoothed regression line through the points.
- 5) Dashed lines bound the 0.05 confidence interval around the regression line (not the points).
- 6) Metric codes are as follows:

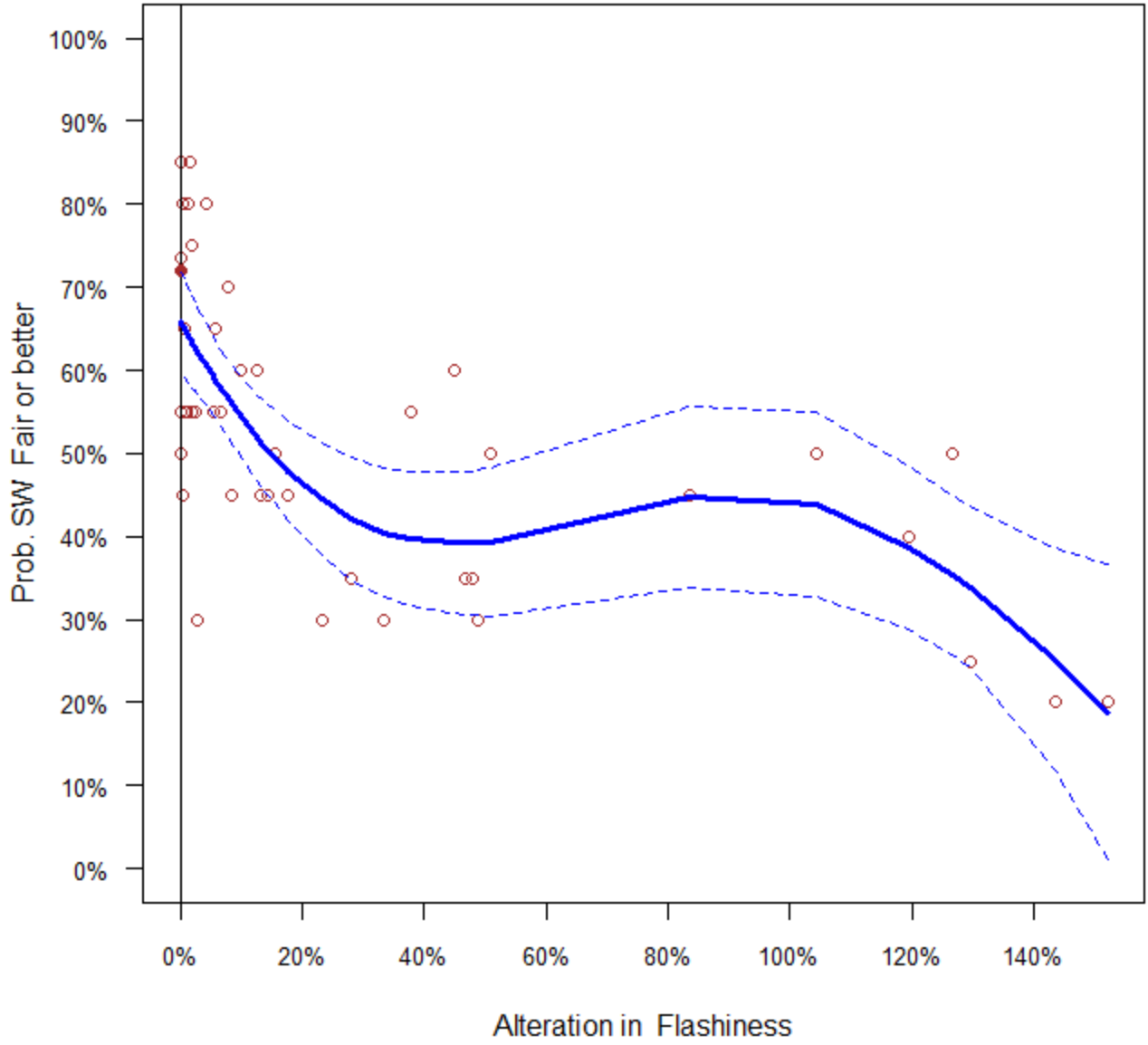
Macroinvertebrate metrics	Flow metrics
Pct_EPT – Percent EPT	x3DMax – 3-day maximum
HFBI – Hilsenhoff family-level biotic index	MH21 – High flow index MH21
Pct_Chiron – Percent Chironomidae	DH17 – High flow duration DH17
Pct_Scraper – Percent Scraper	LPDur – Low pulse duration
Pct_Clinger – Percent Clinger	HPCnt – High pulse count
SW – Shannon-Wiener diversity index	Flashiness – Flashiness
BIBI – Chessie BIBI, or Chesapeake Basin-wide Index of Biotic Integrity	

Definitions are provided in Supplemental Tables A and B at the back of the report.

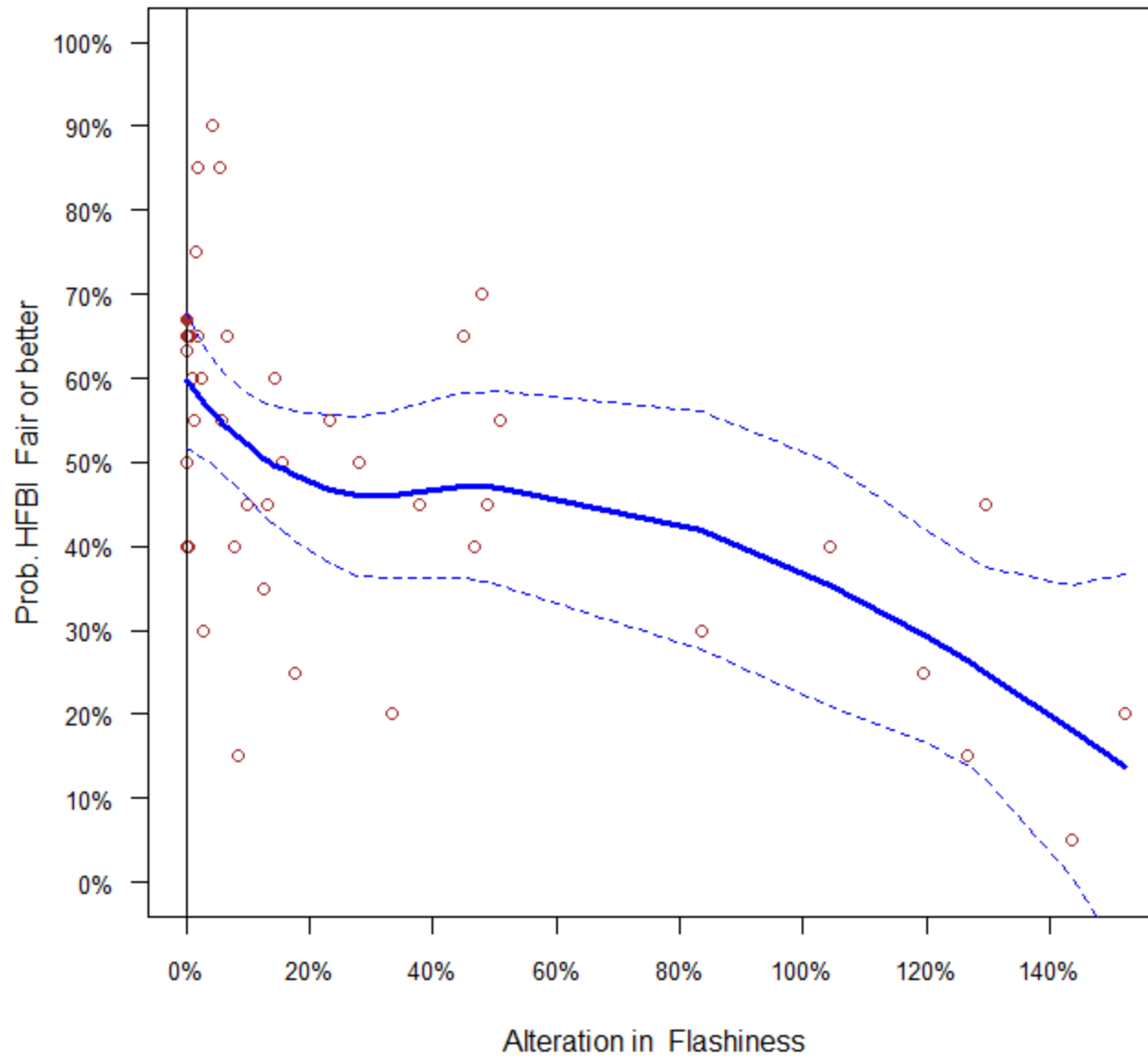
BIBI ~ Alteration in Flashiness



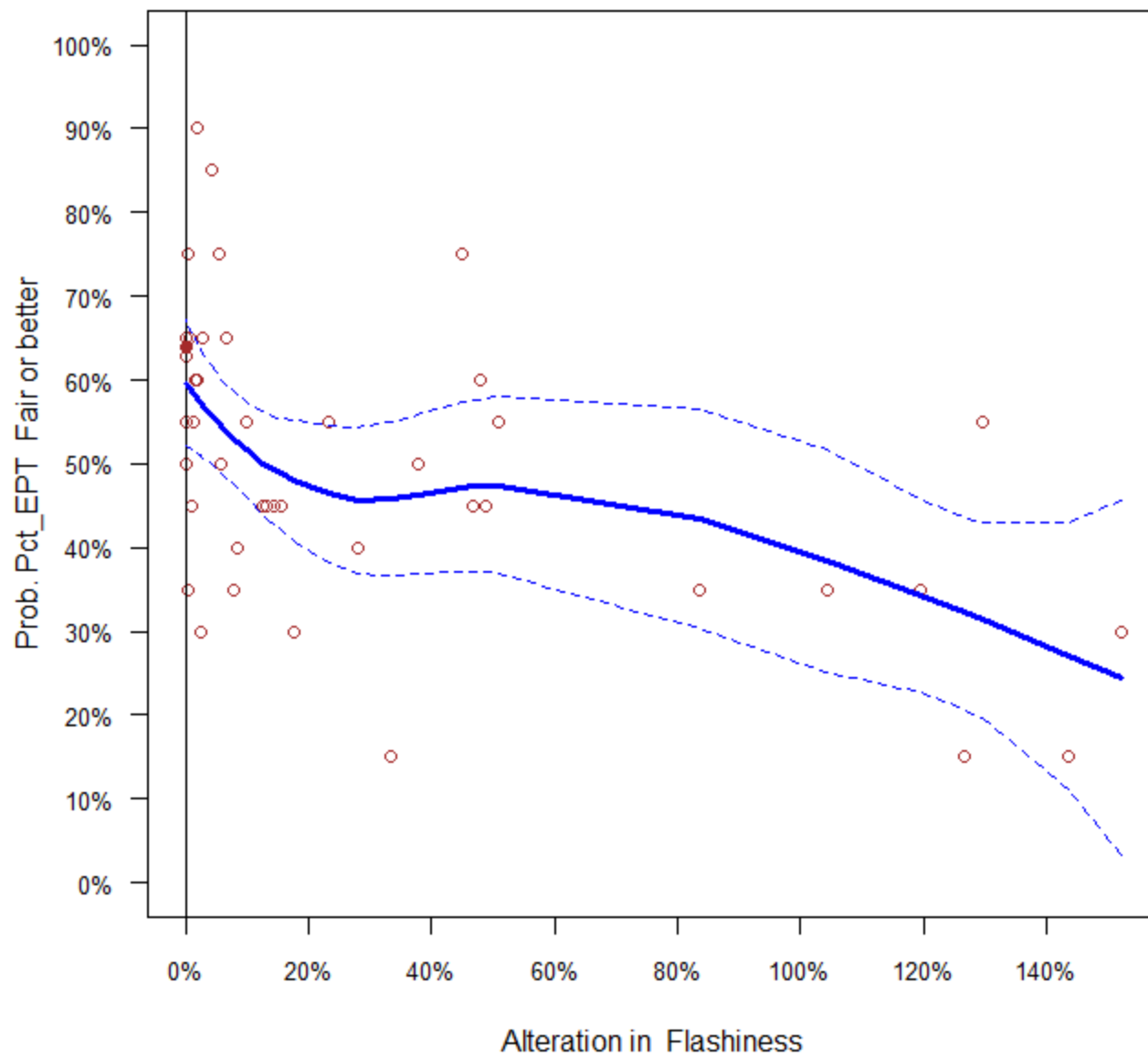
SW ~ Alteration in Flashiness



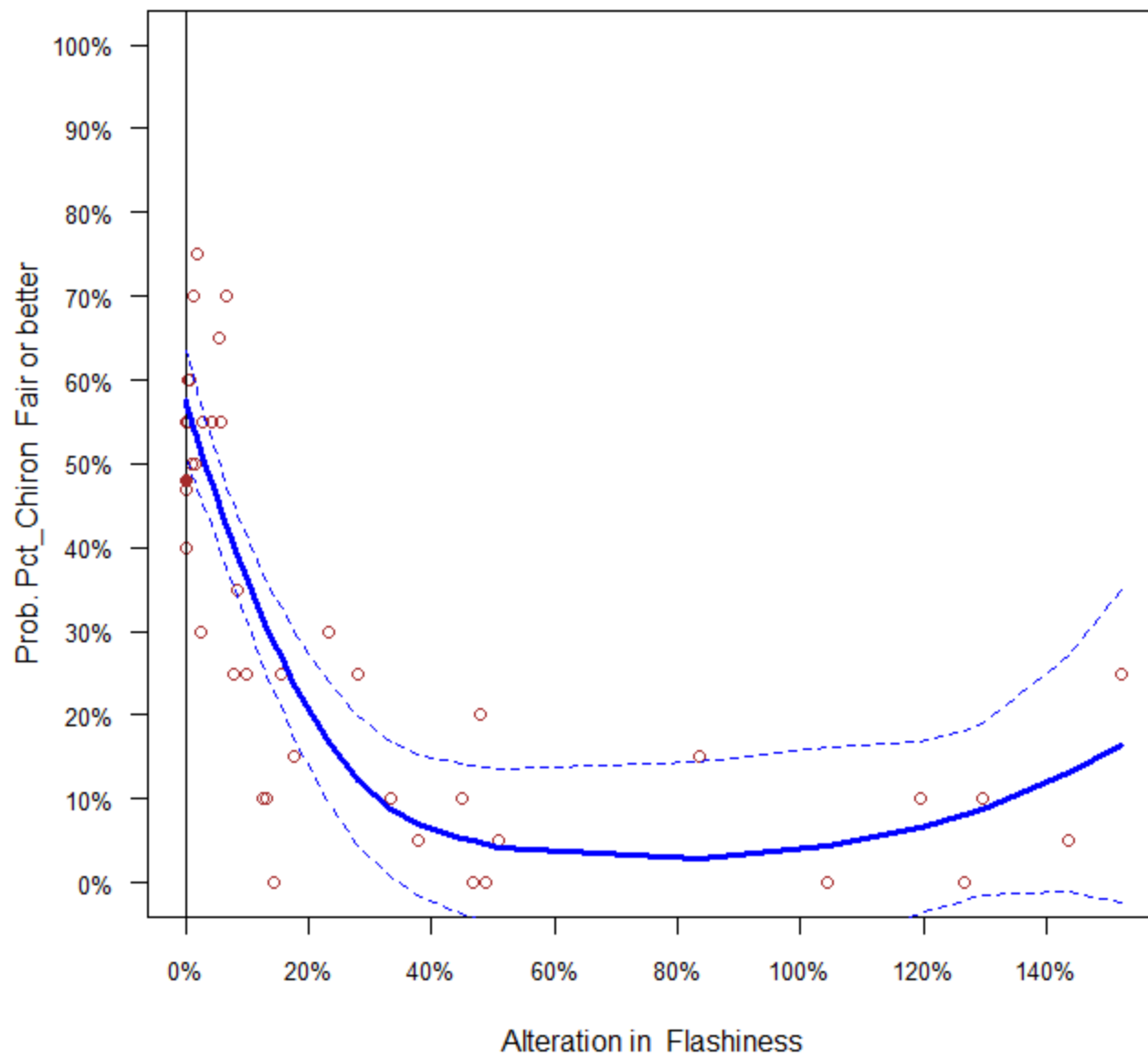
HFBI ~ Alteration in Flashiness



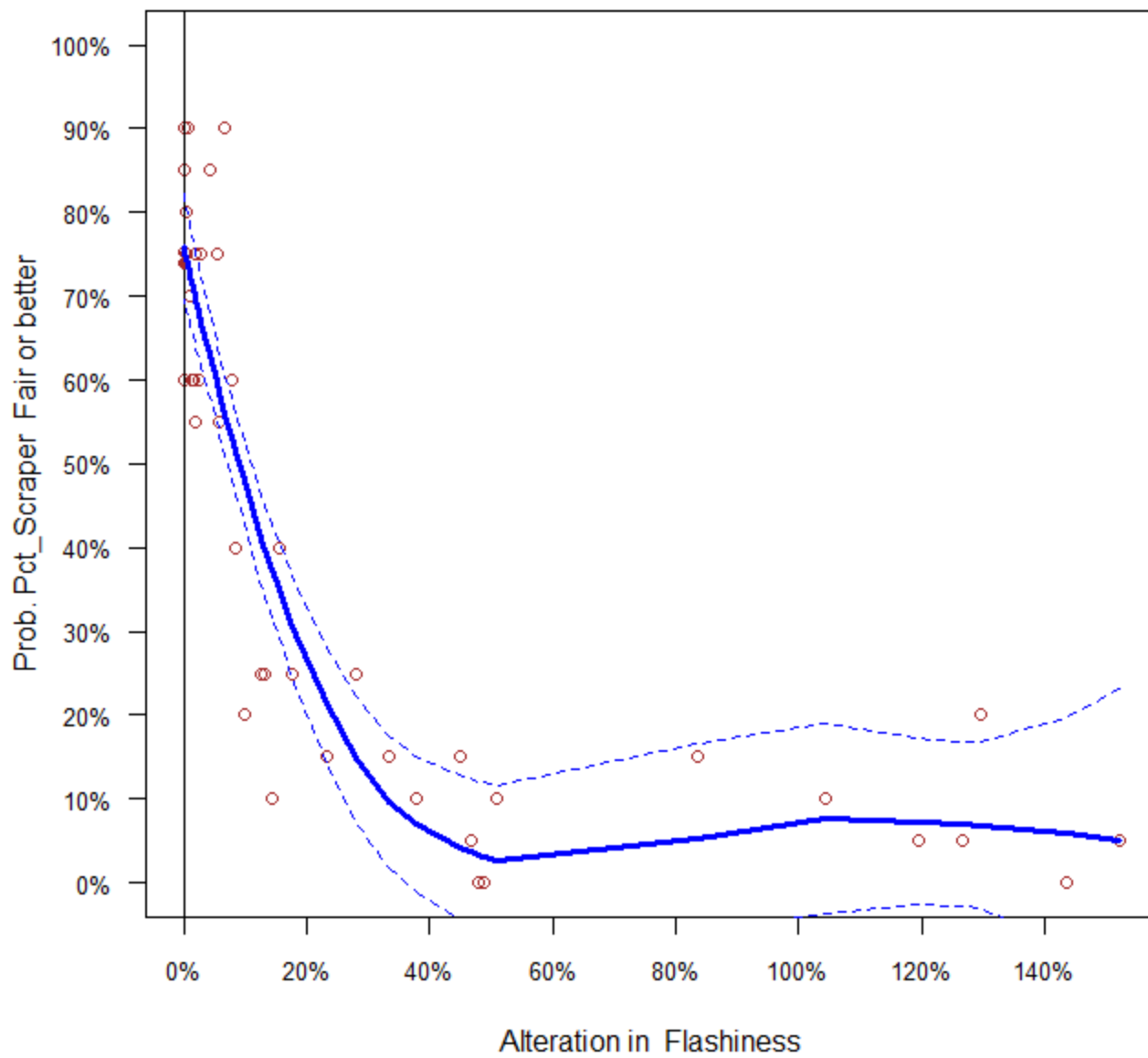
Pct_EPT ~ Alteration in Flashiness



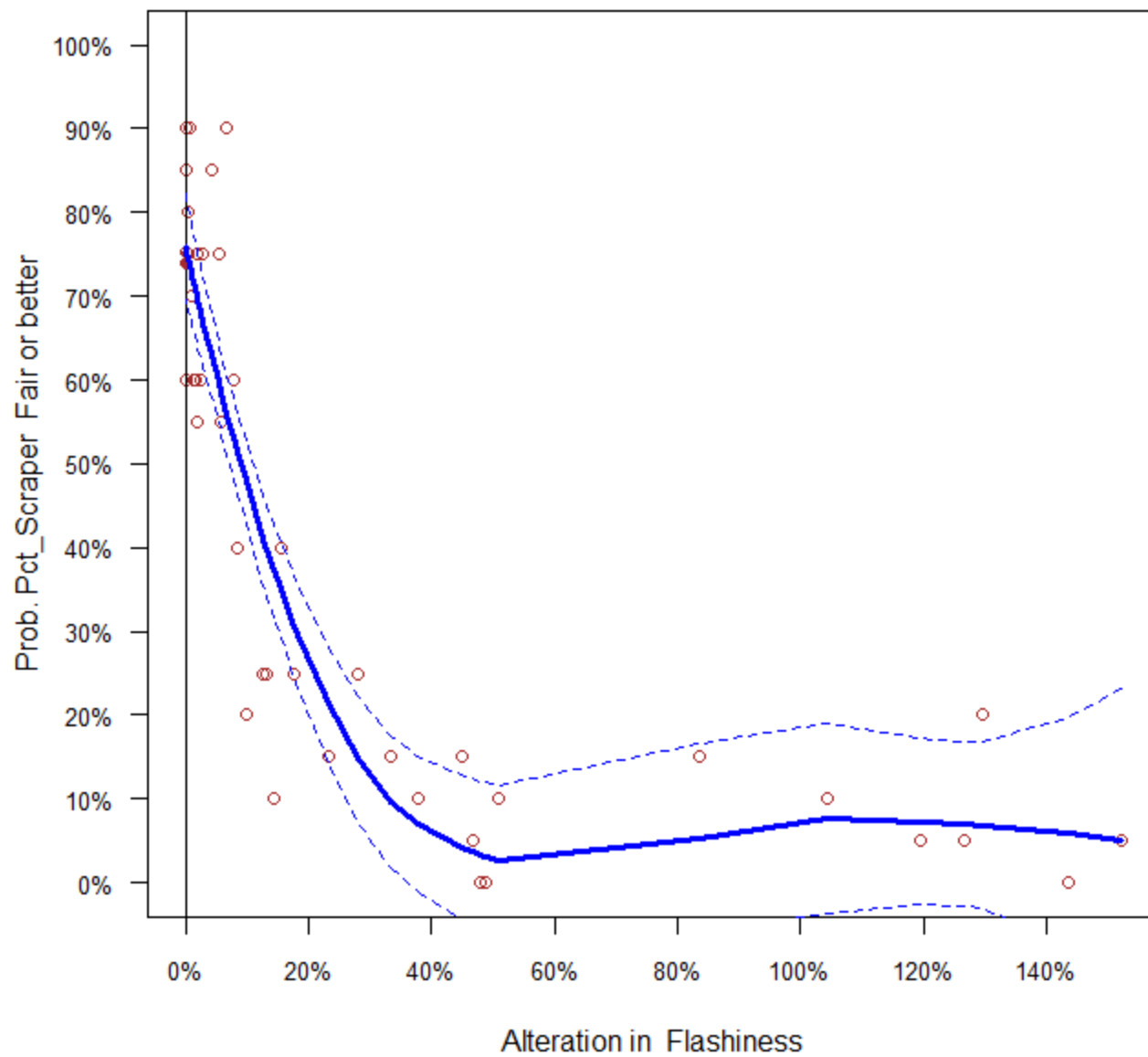
Pct_Chiron ~ Alteration in Flashiness



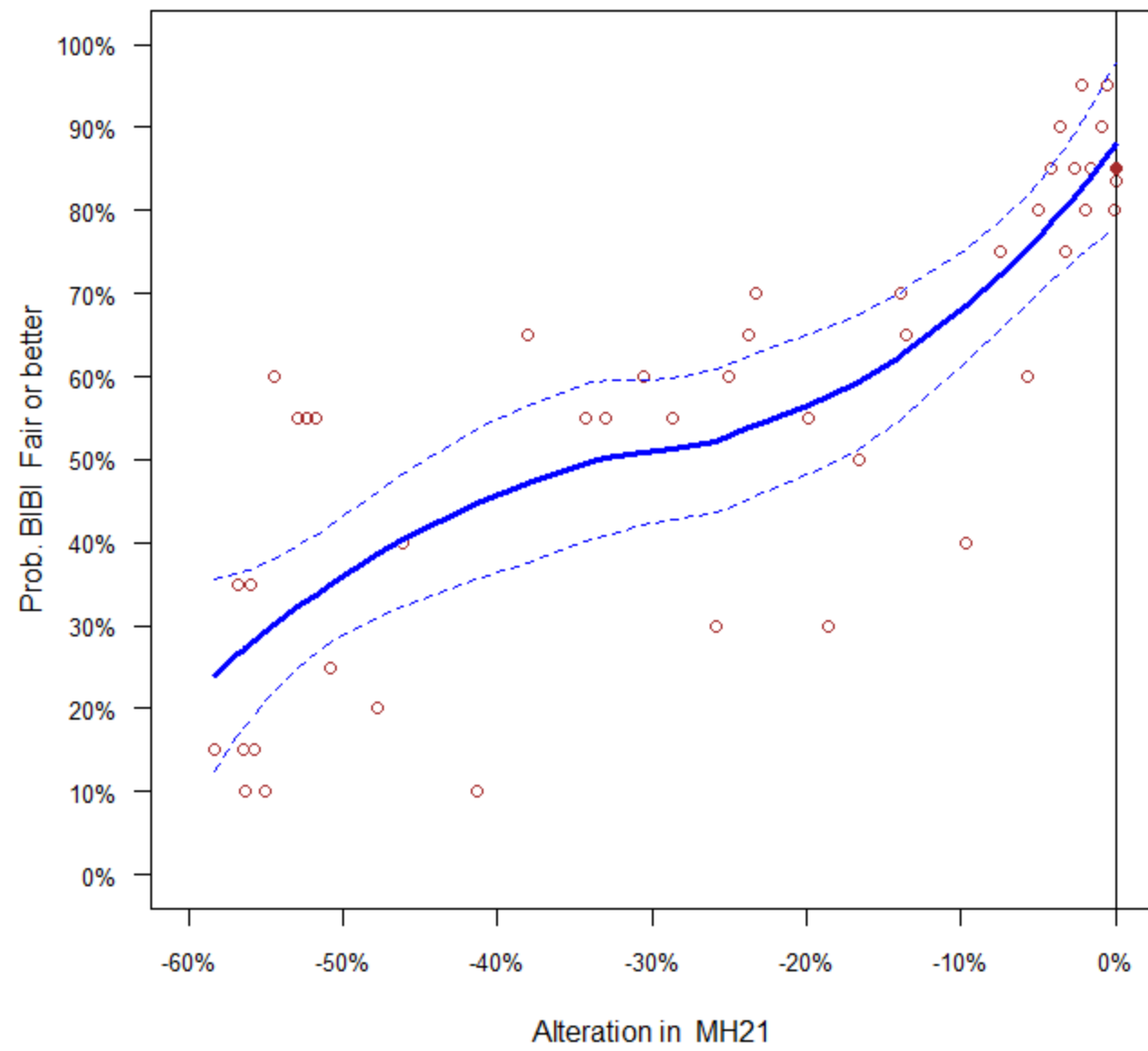
Pct_Scraper ~ Alteration in Flashiness



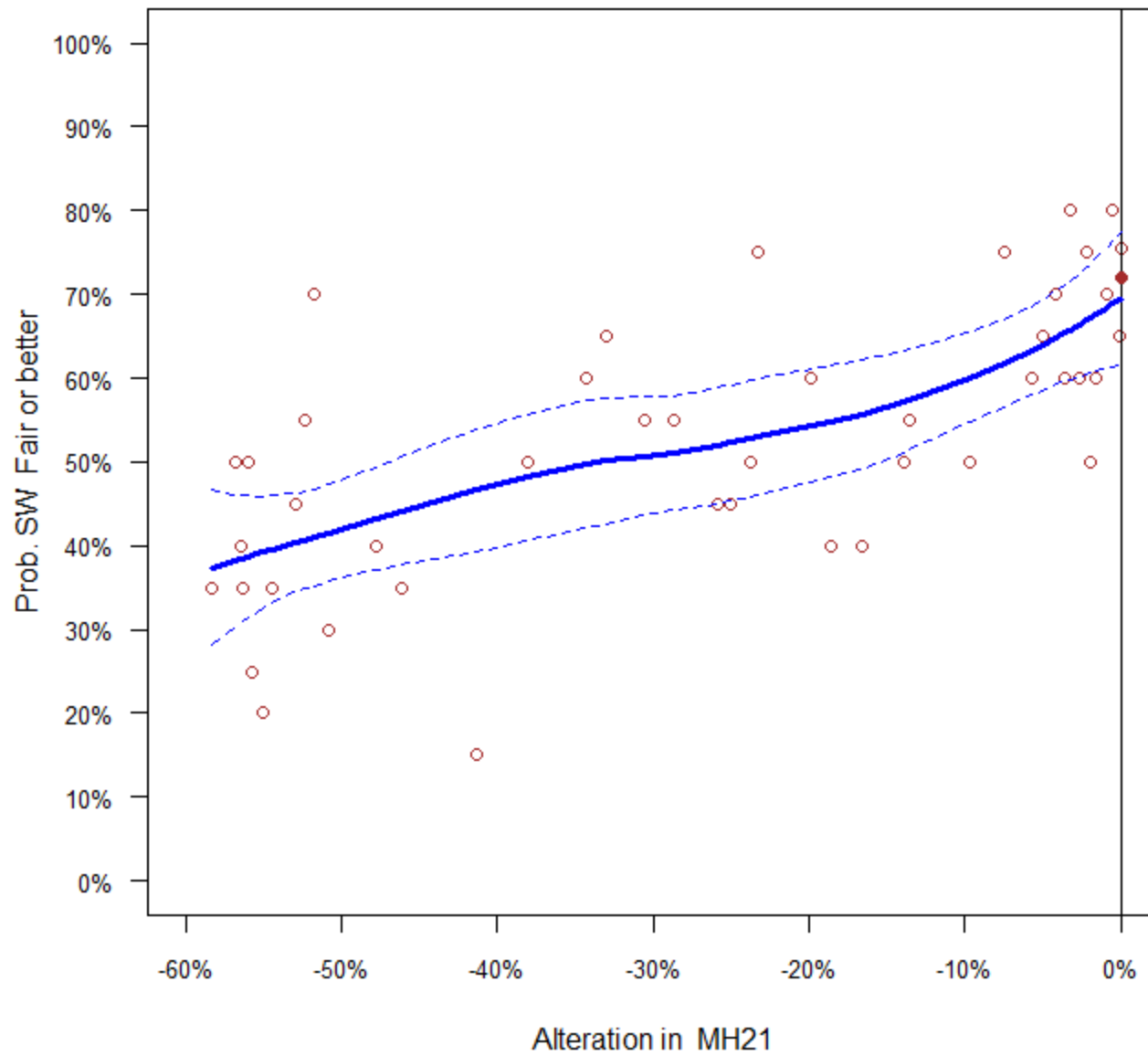
Pct_Scraper ~ Alteration in Flashiness



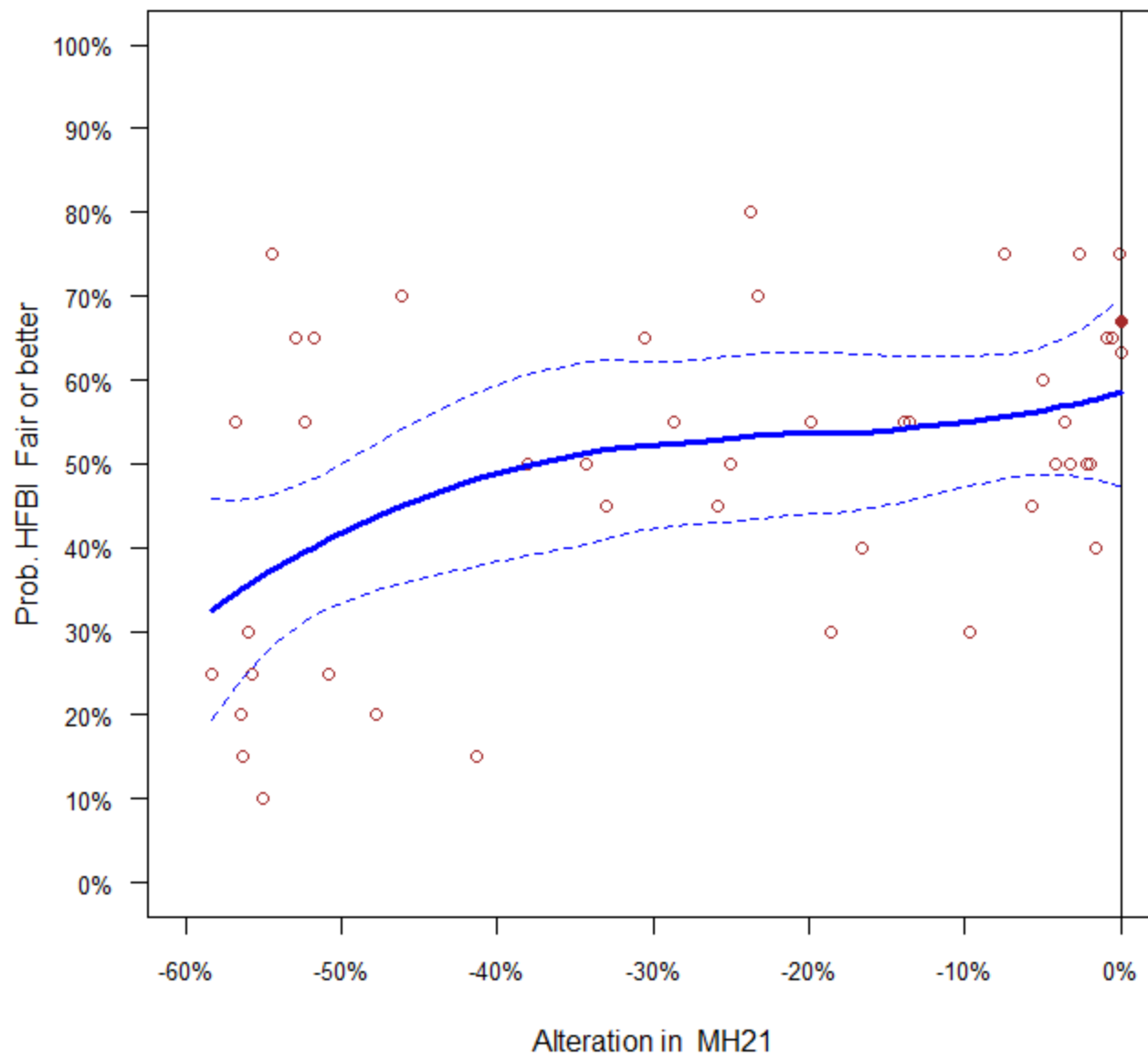
BIBI ~ Alteration in MH21



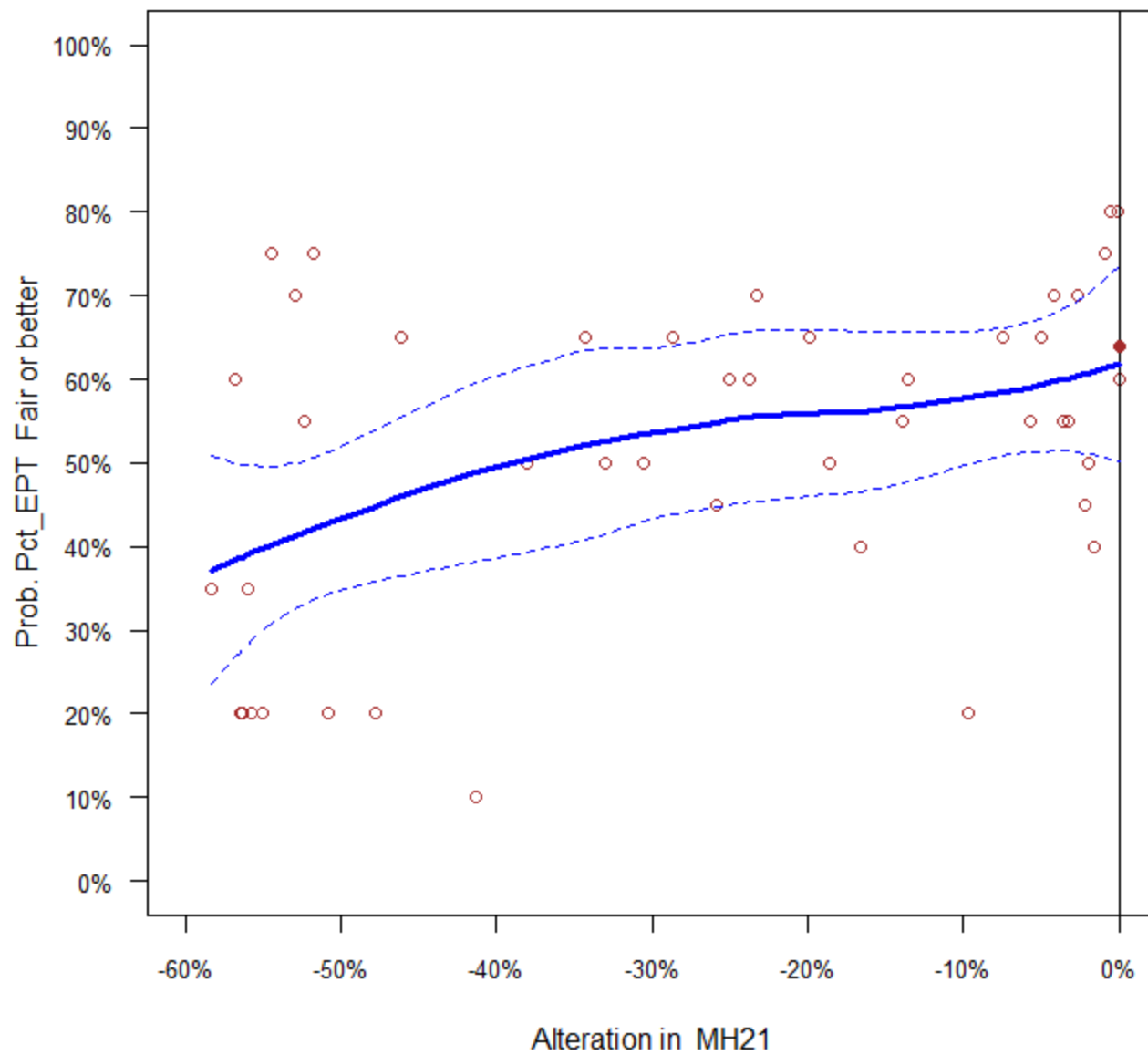
SW ~ Alteration in MH21



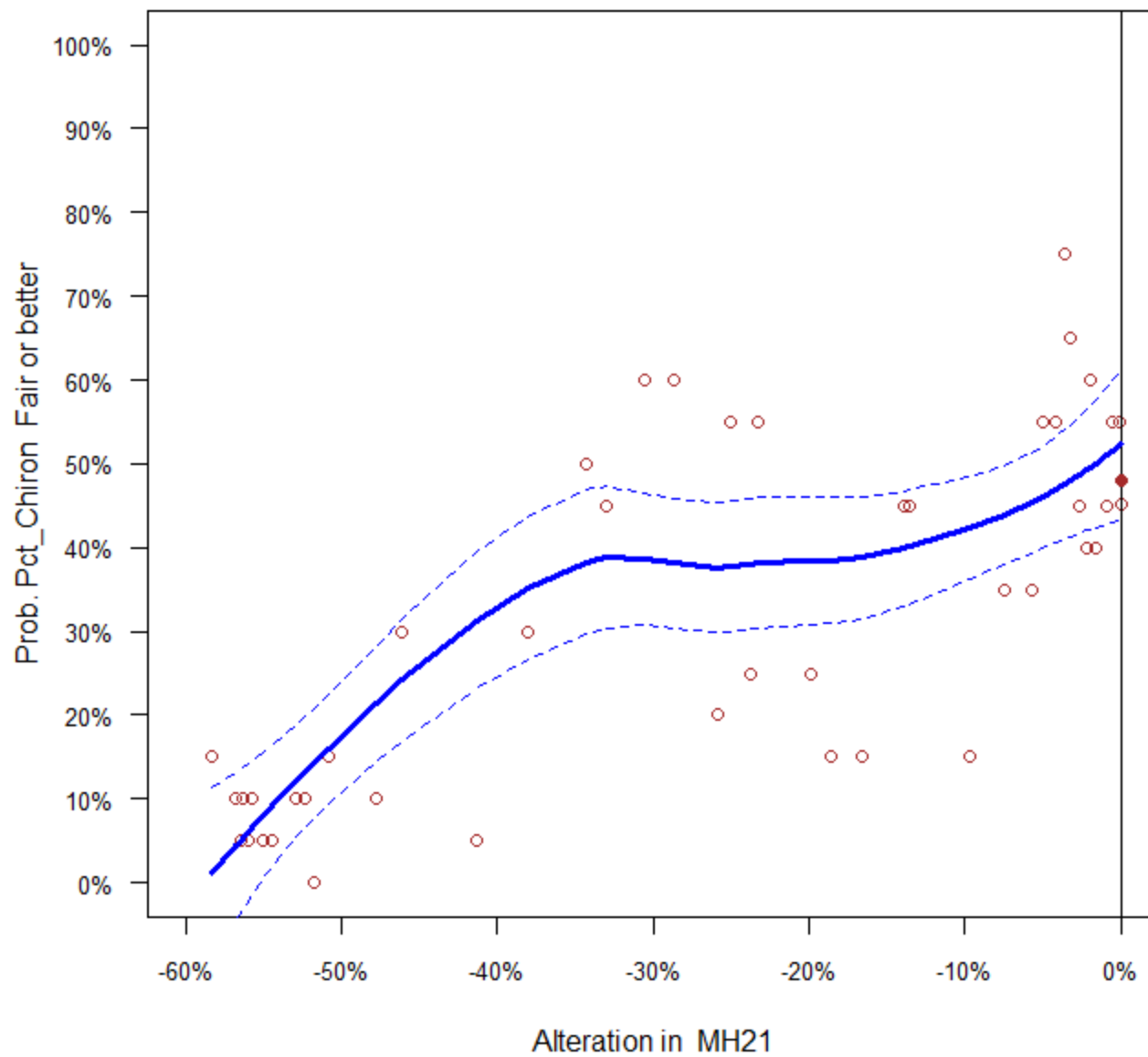
HFBI ~ Alteration in MH21



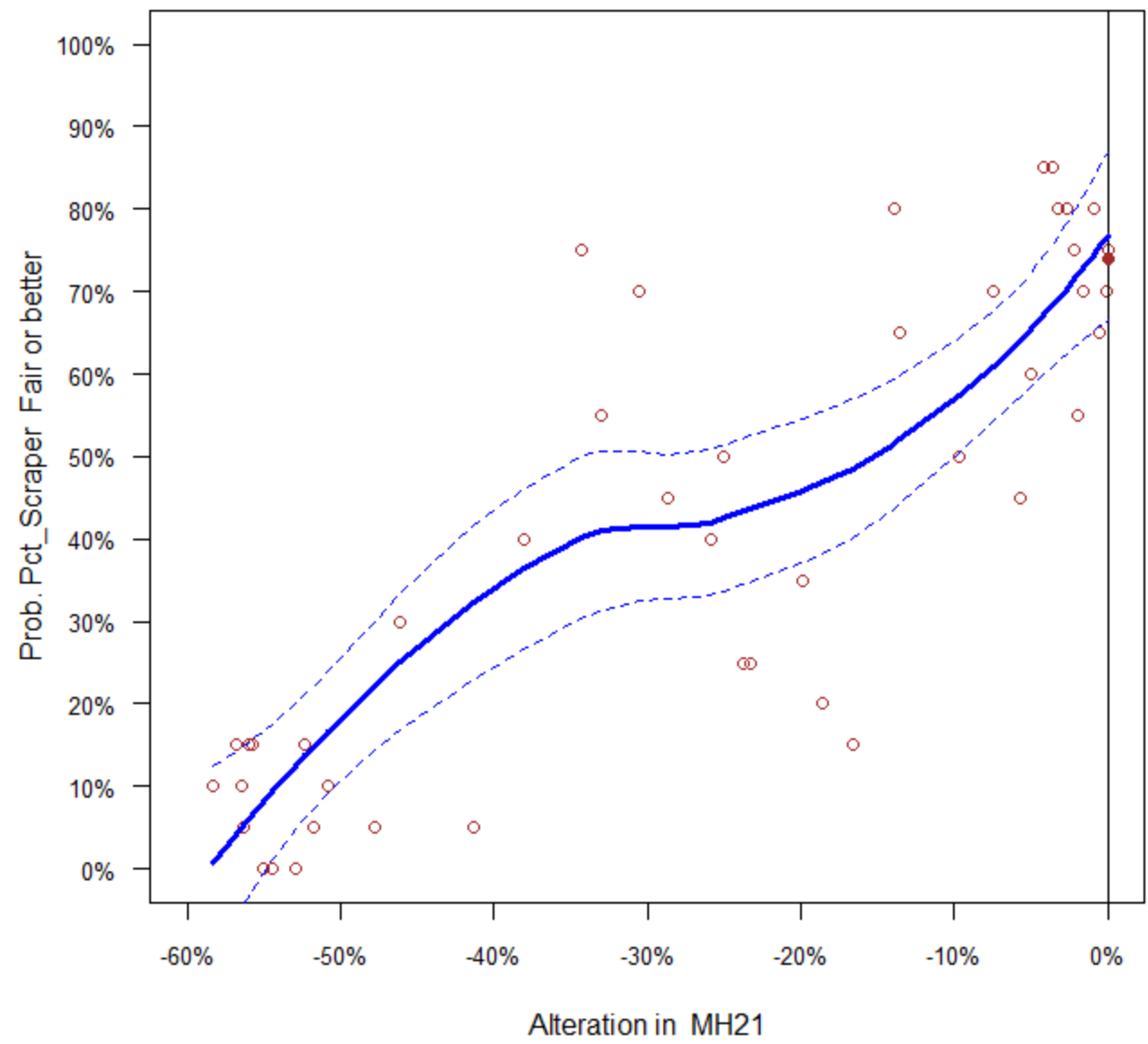
Pct_EPT ~ Alteration in MH21



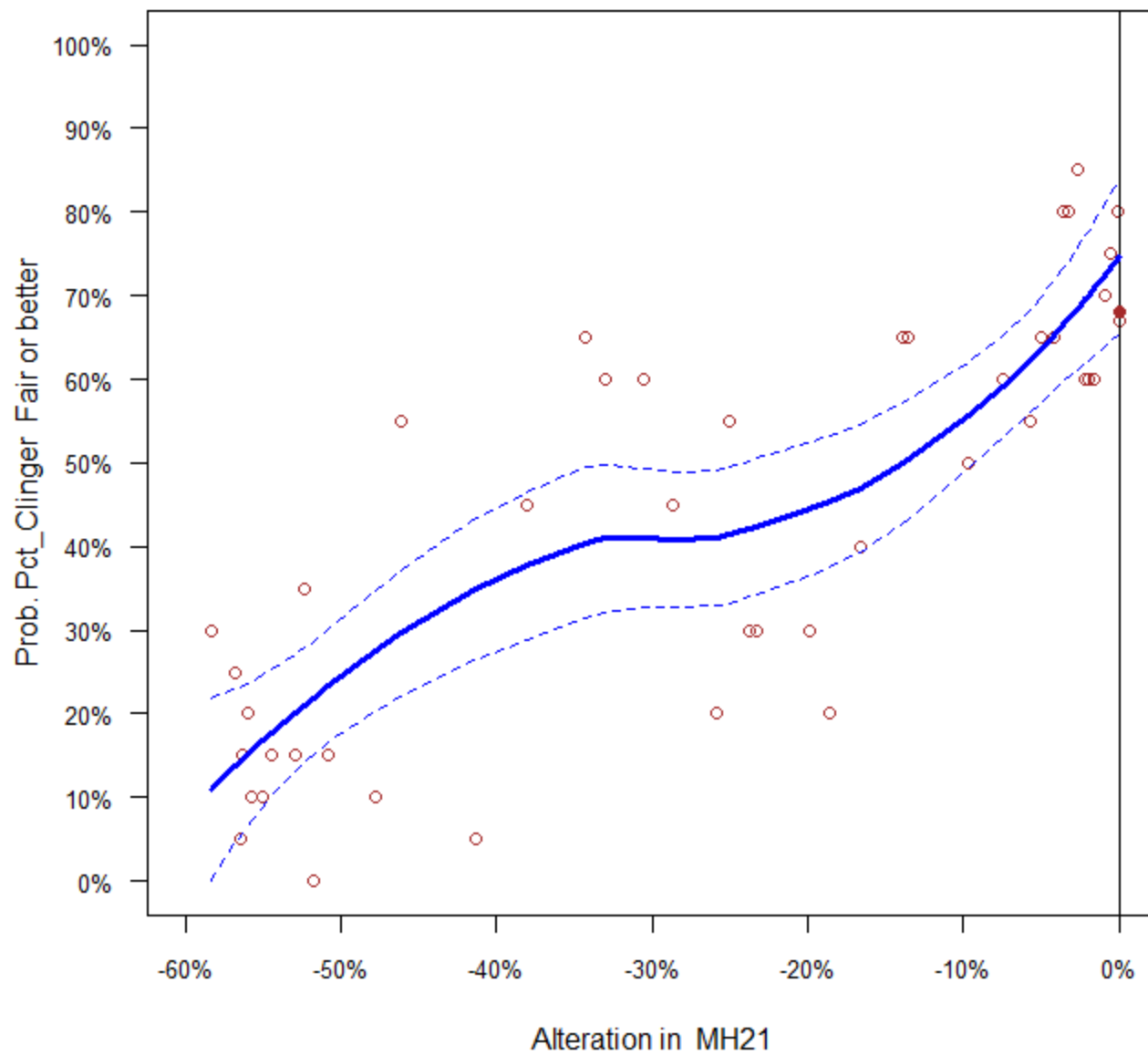
Pct_Chiron ~ Alteration in MH21



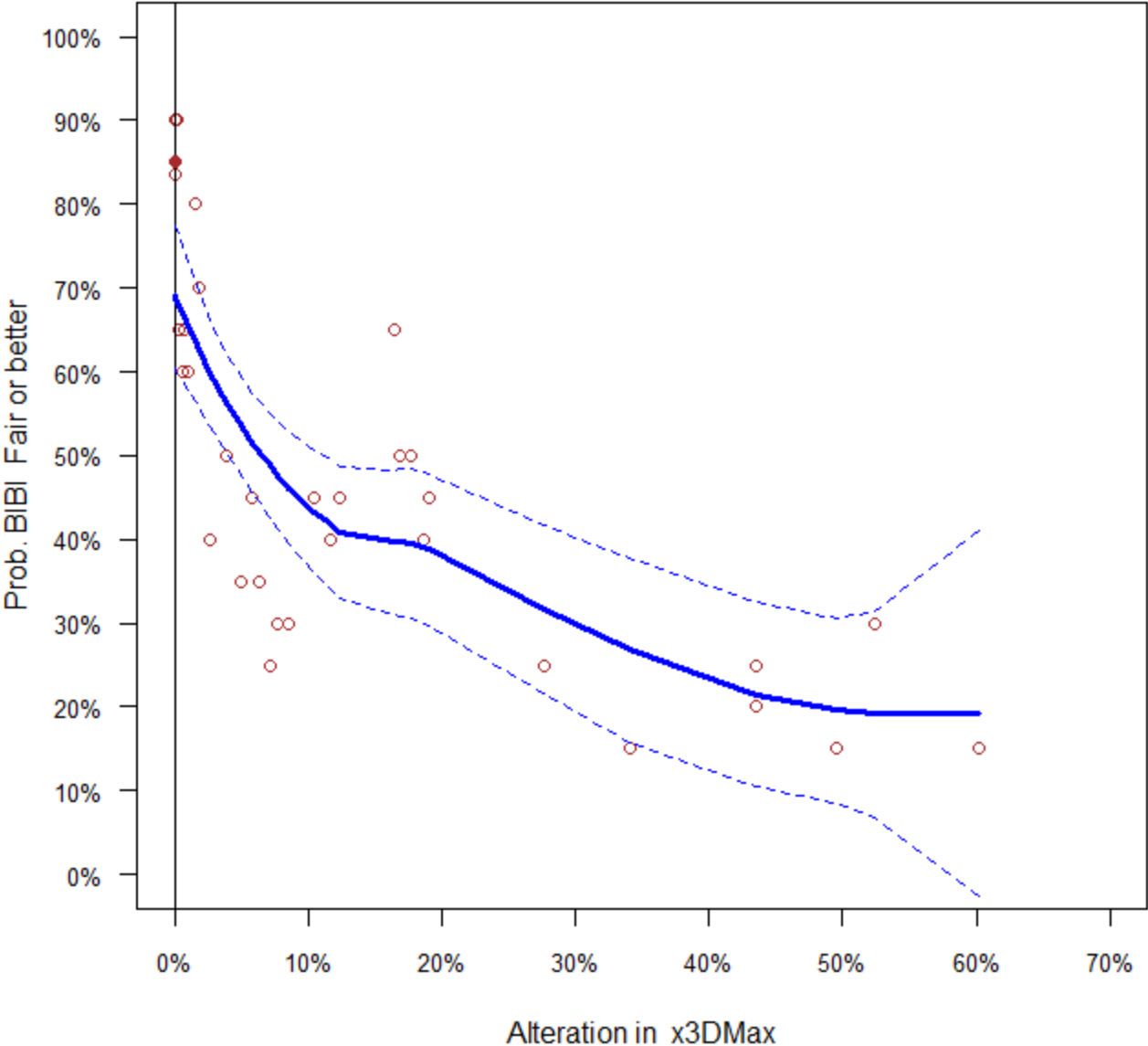
Pct_Scraper ~ Alteration in MH21



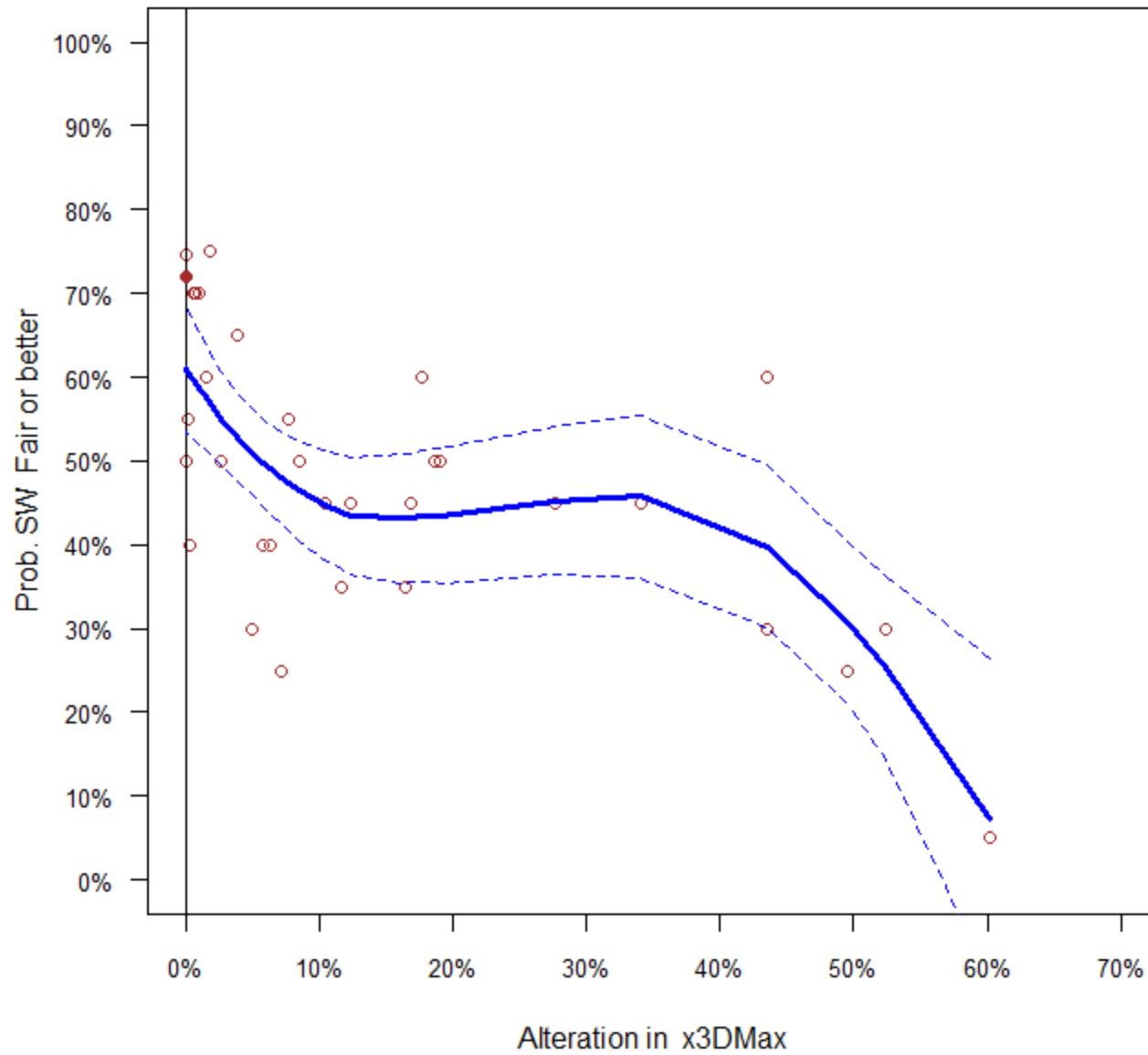
Pct_Clinger ~ Alteration in MH21



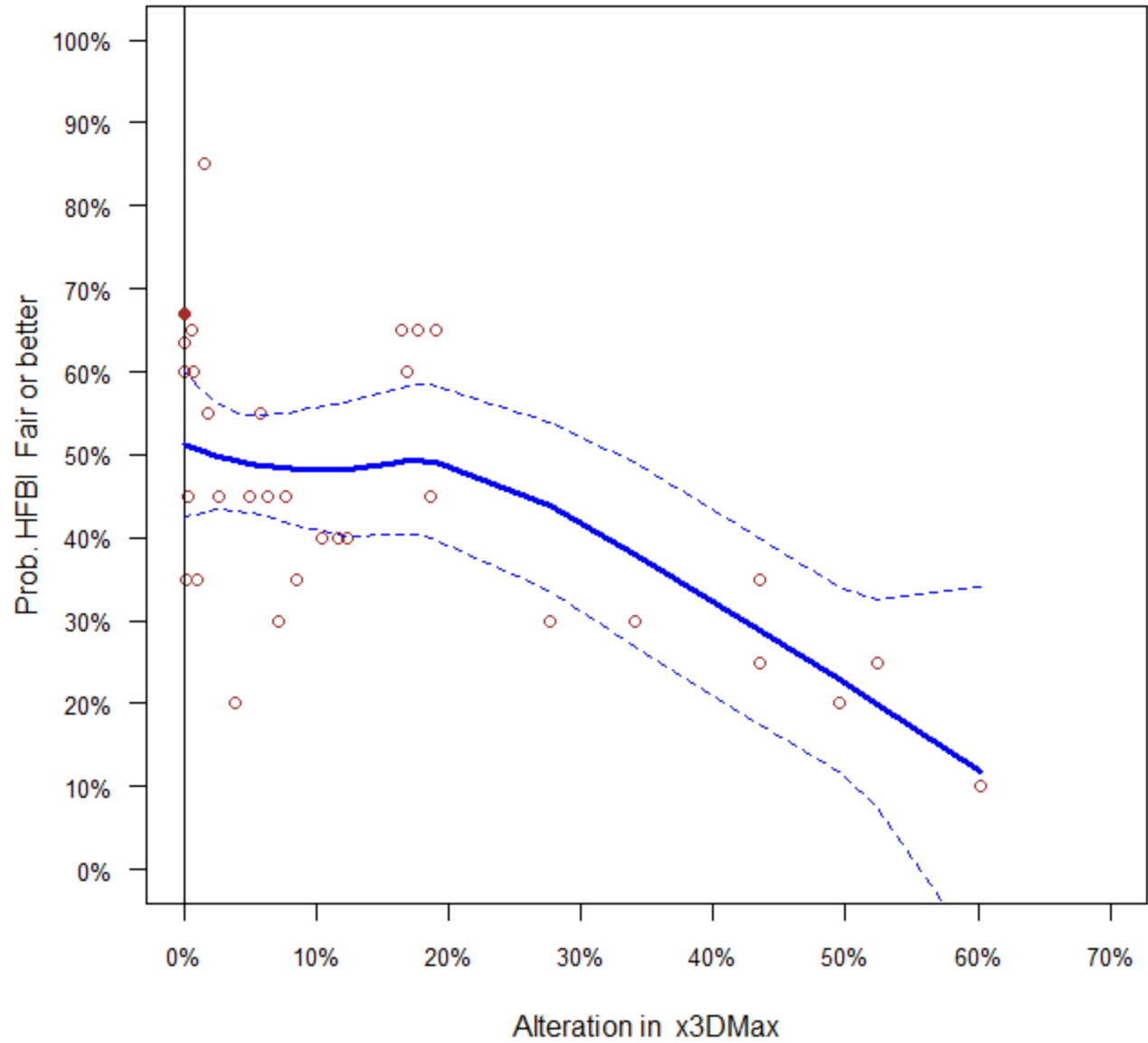
BIBI ~ Alteration in x3DMax



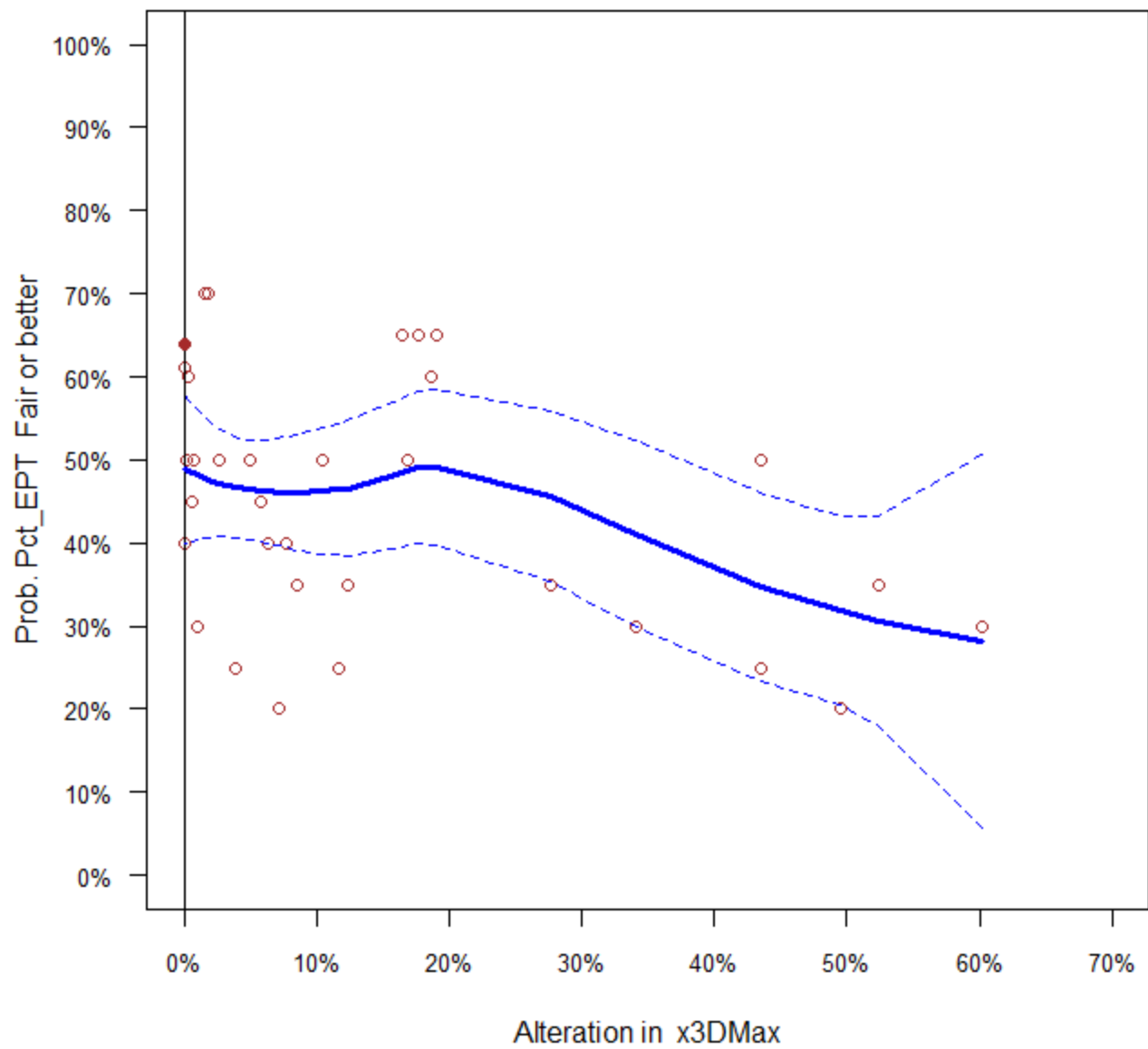
SW ~ Alteration in x3DMax



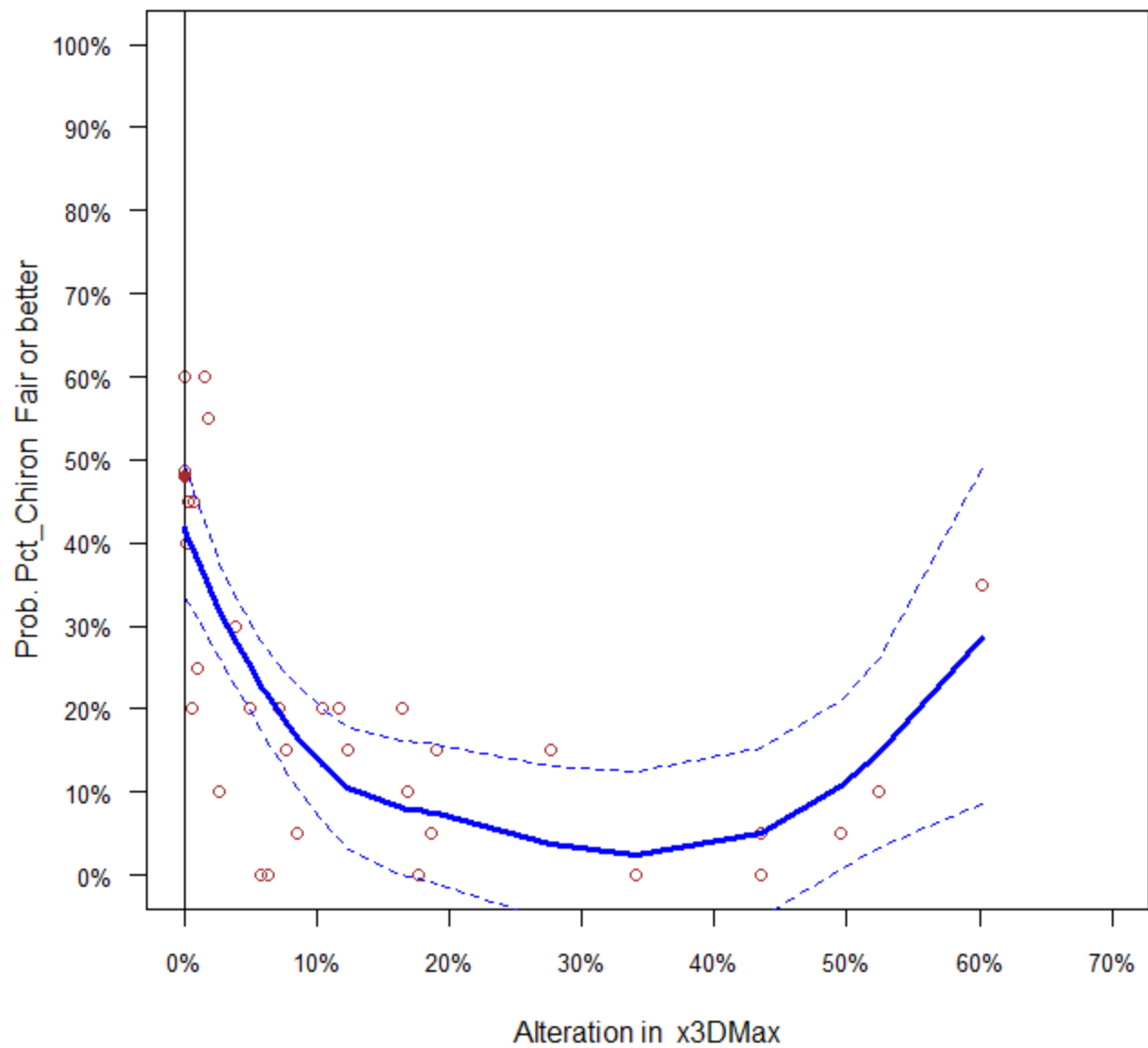
HFBI ~ Alteration in x3DMax



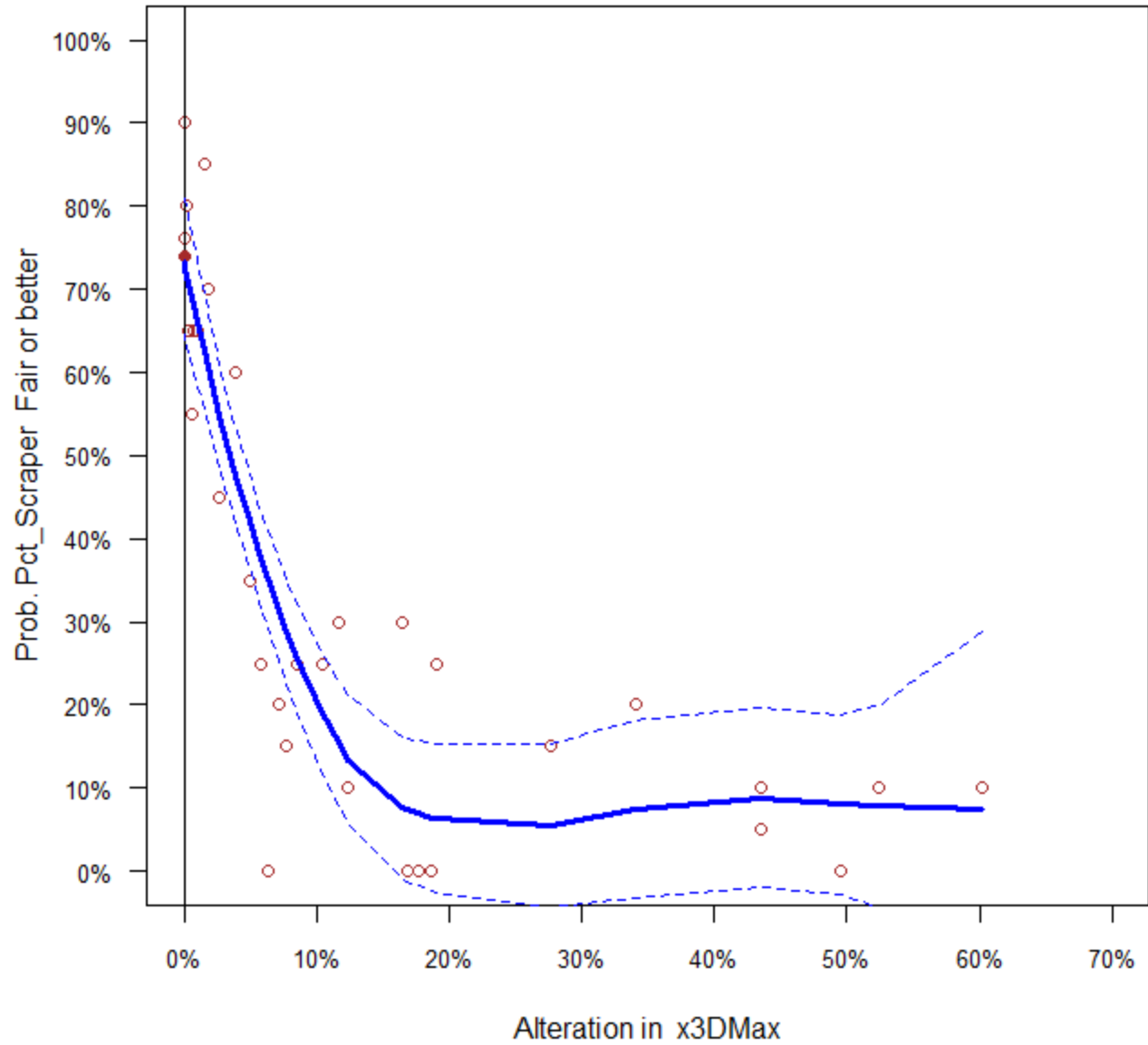
Pct_EPT ~ Alteration in x3DMax



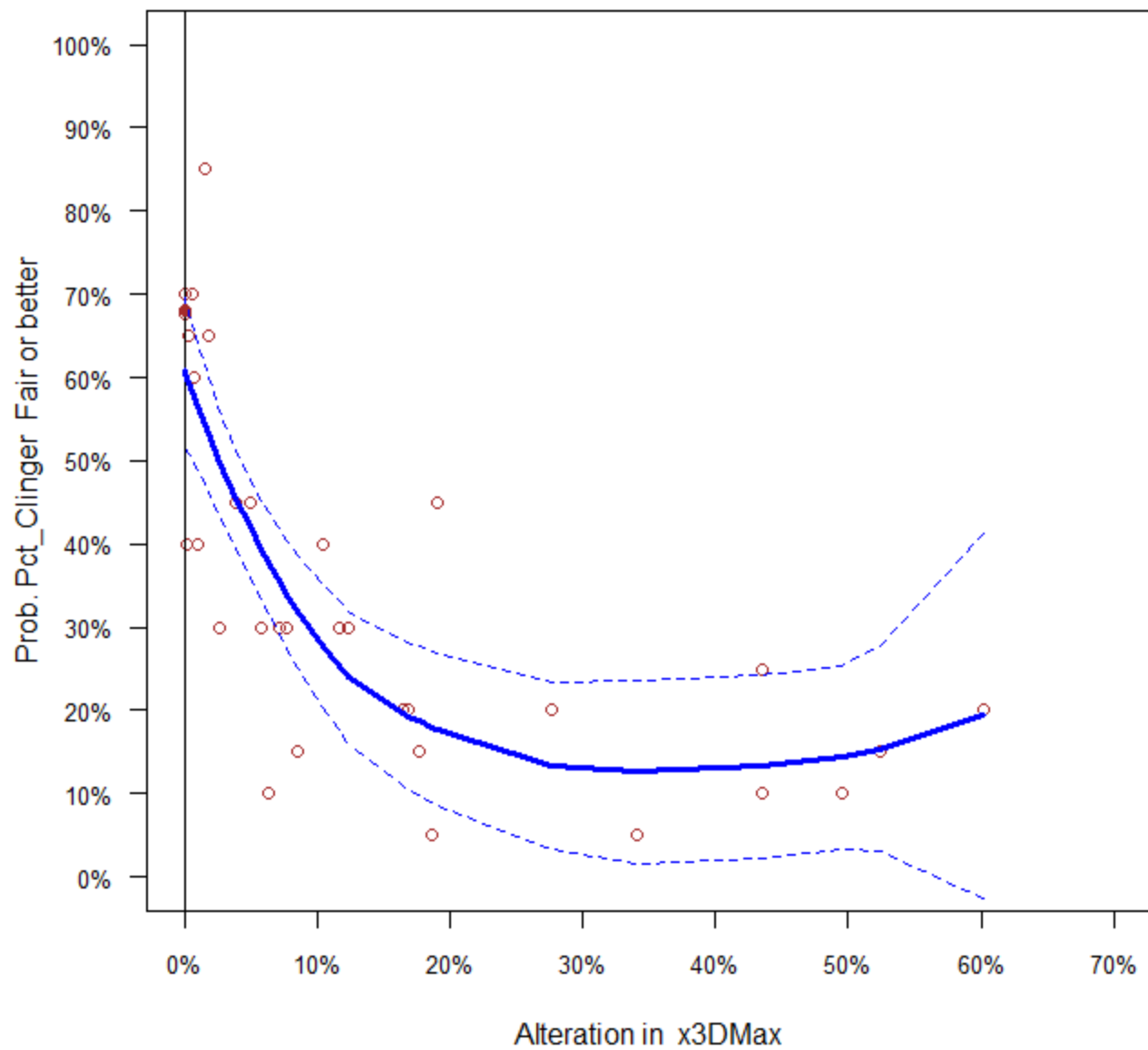
Pct_Chiron ~ Alteration in x3DMax



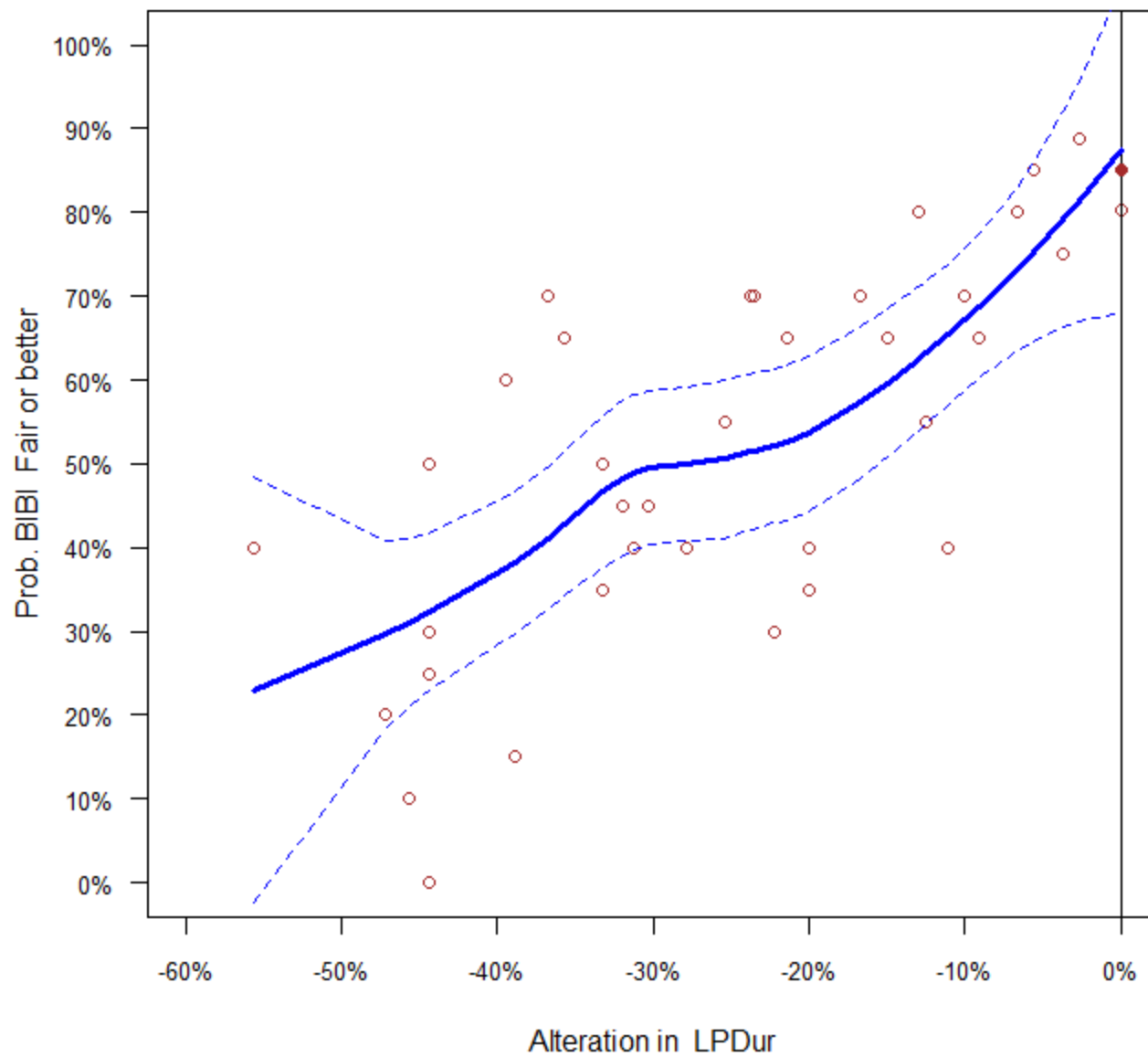
Pct_Scraper ~ Alteration in x3DMax



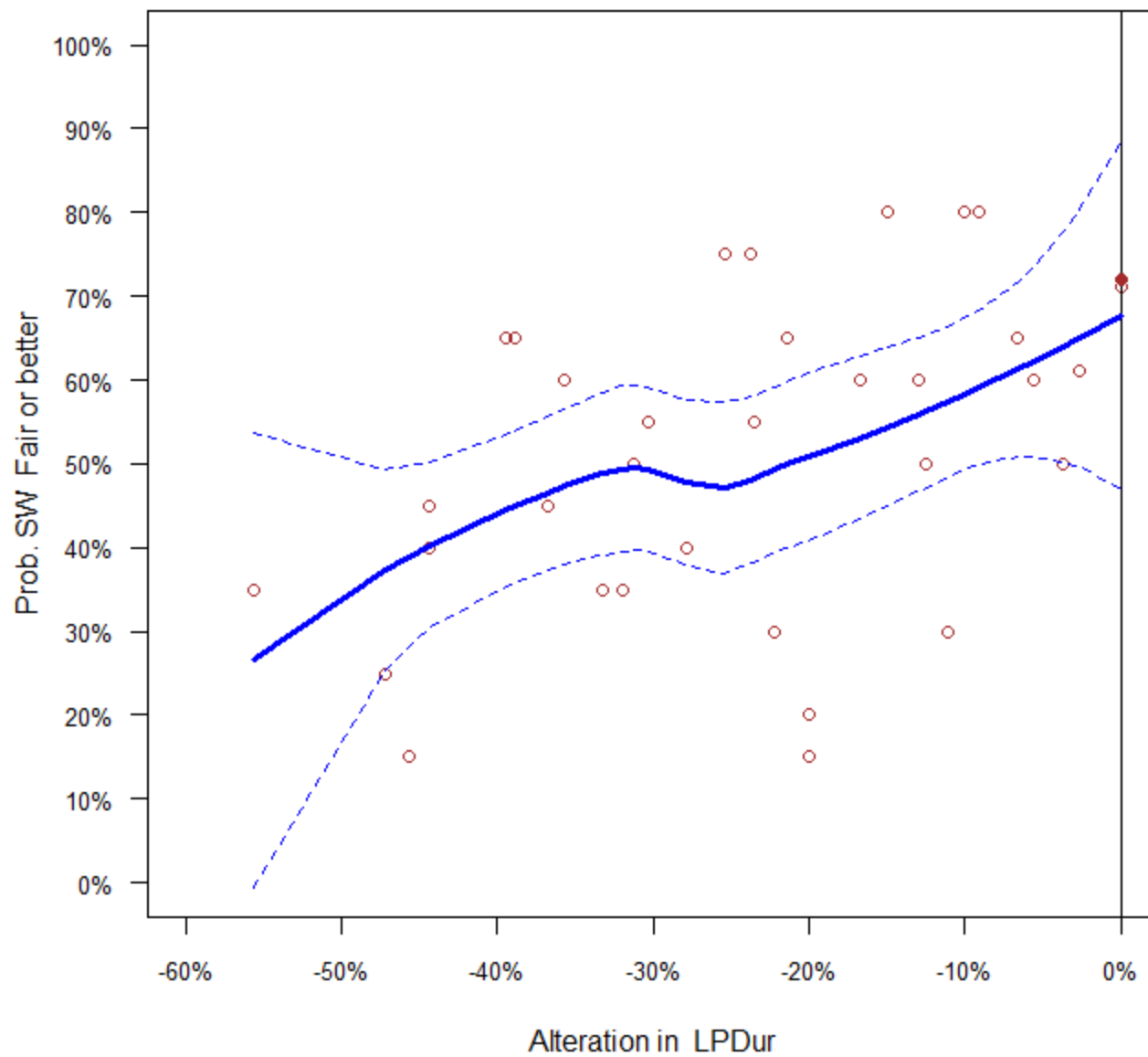
Pct_Clinger ~ Alteration in x3DMax



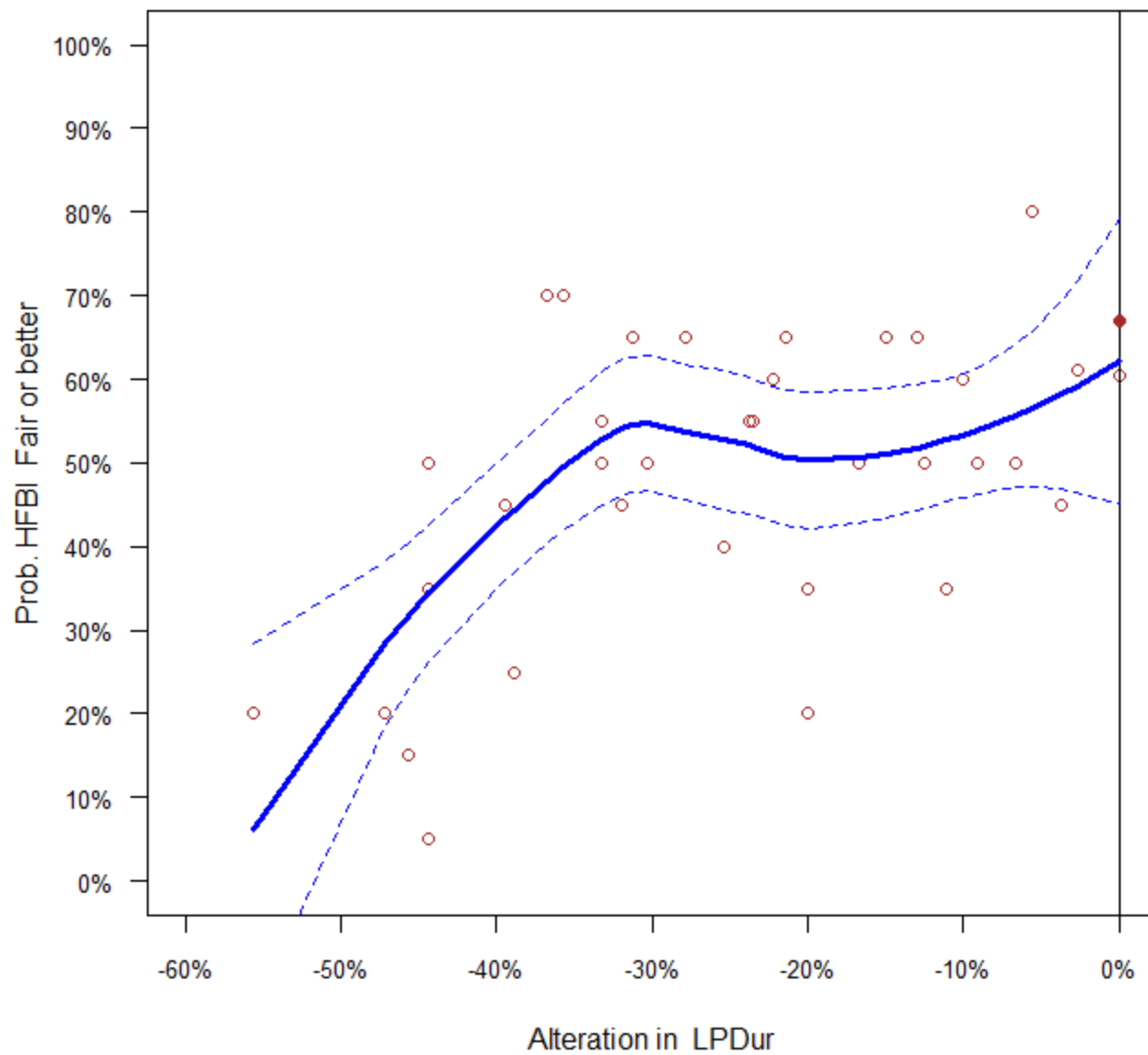
BIBI ~ Alteration in LPDur



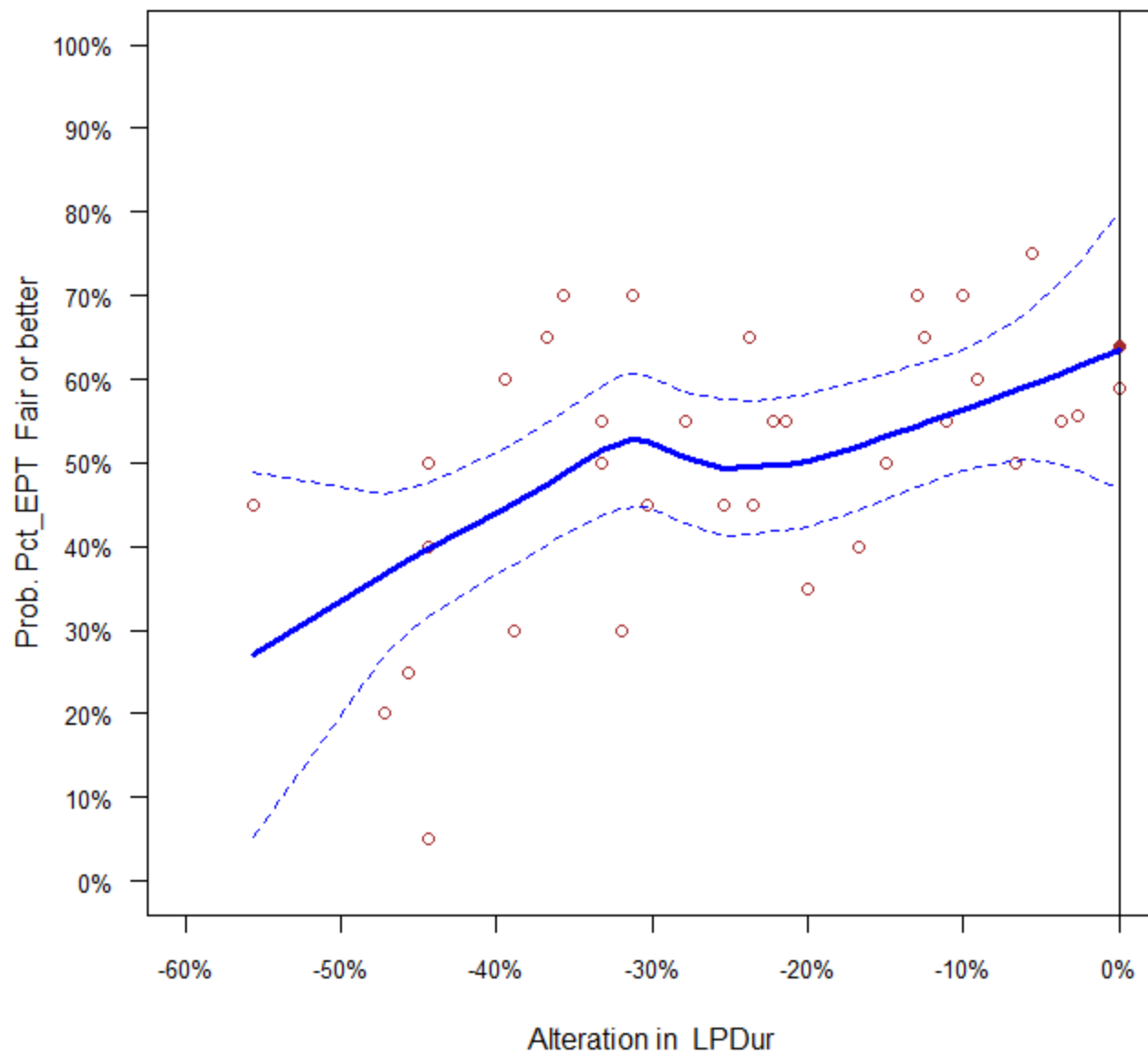
SW ~ Alteration in LPDur



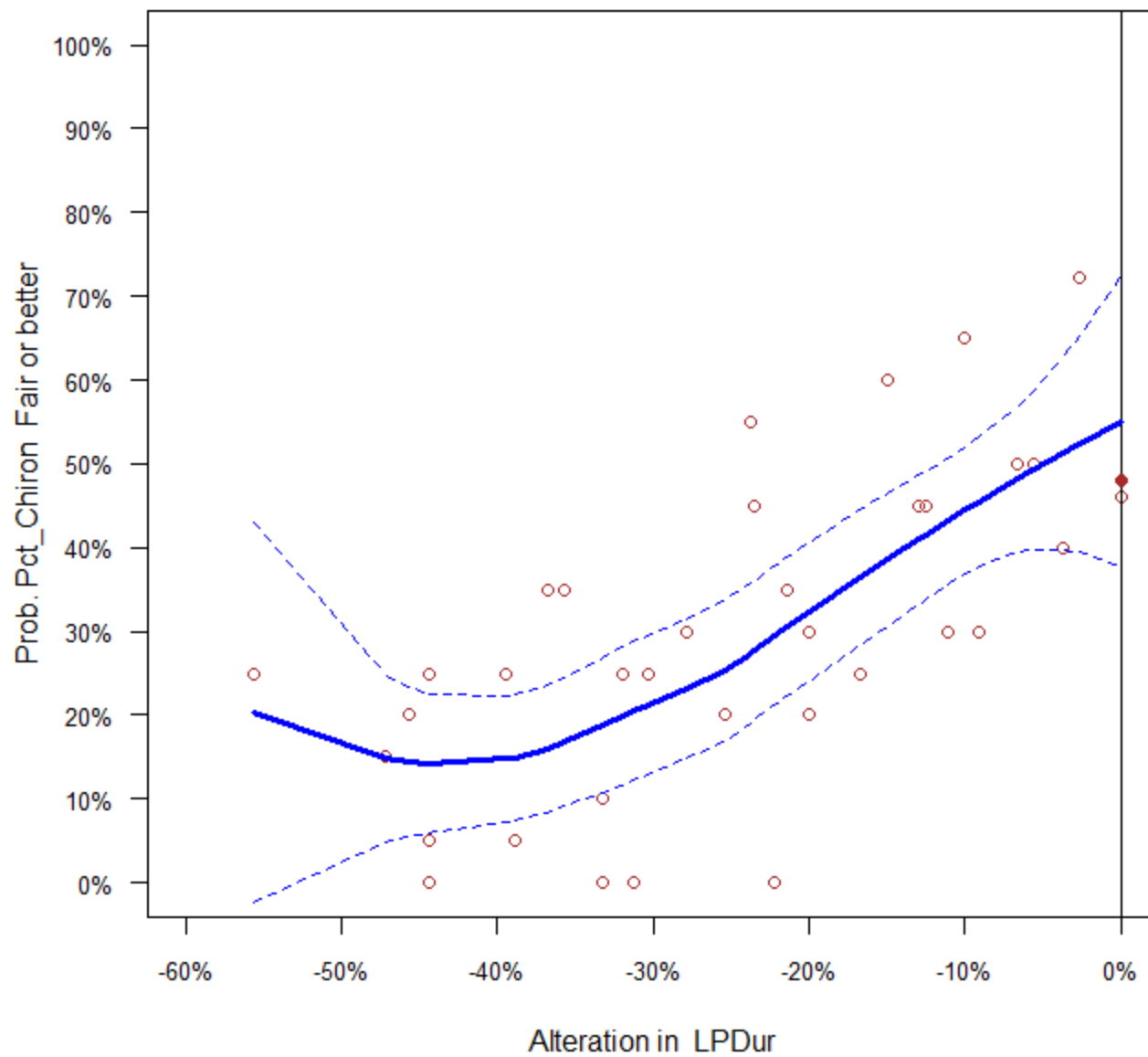
HFBI ~ Alteration in LPDur



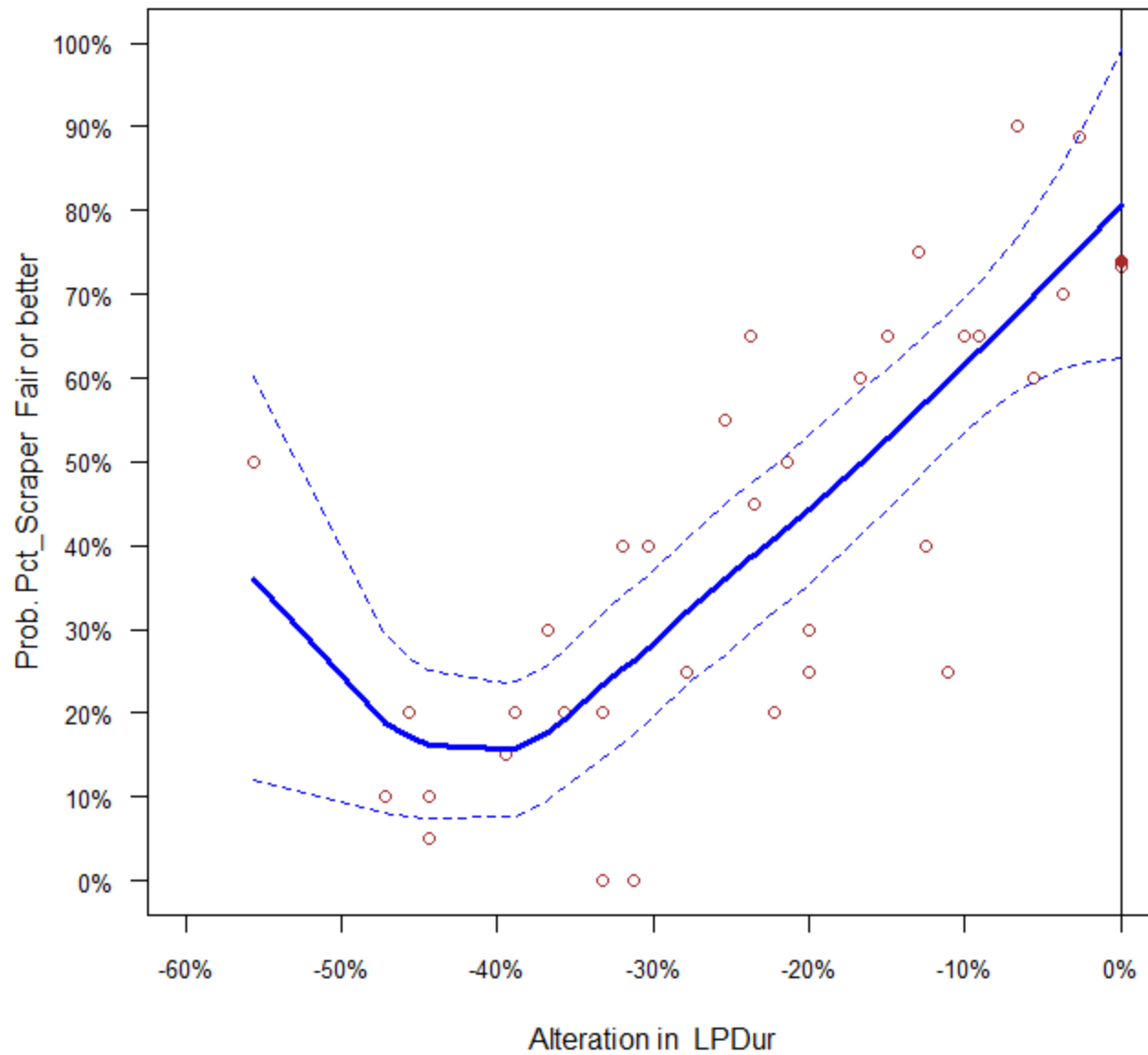
Pct_EPT ~ Alteration in LPDur



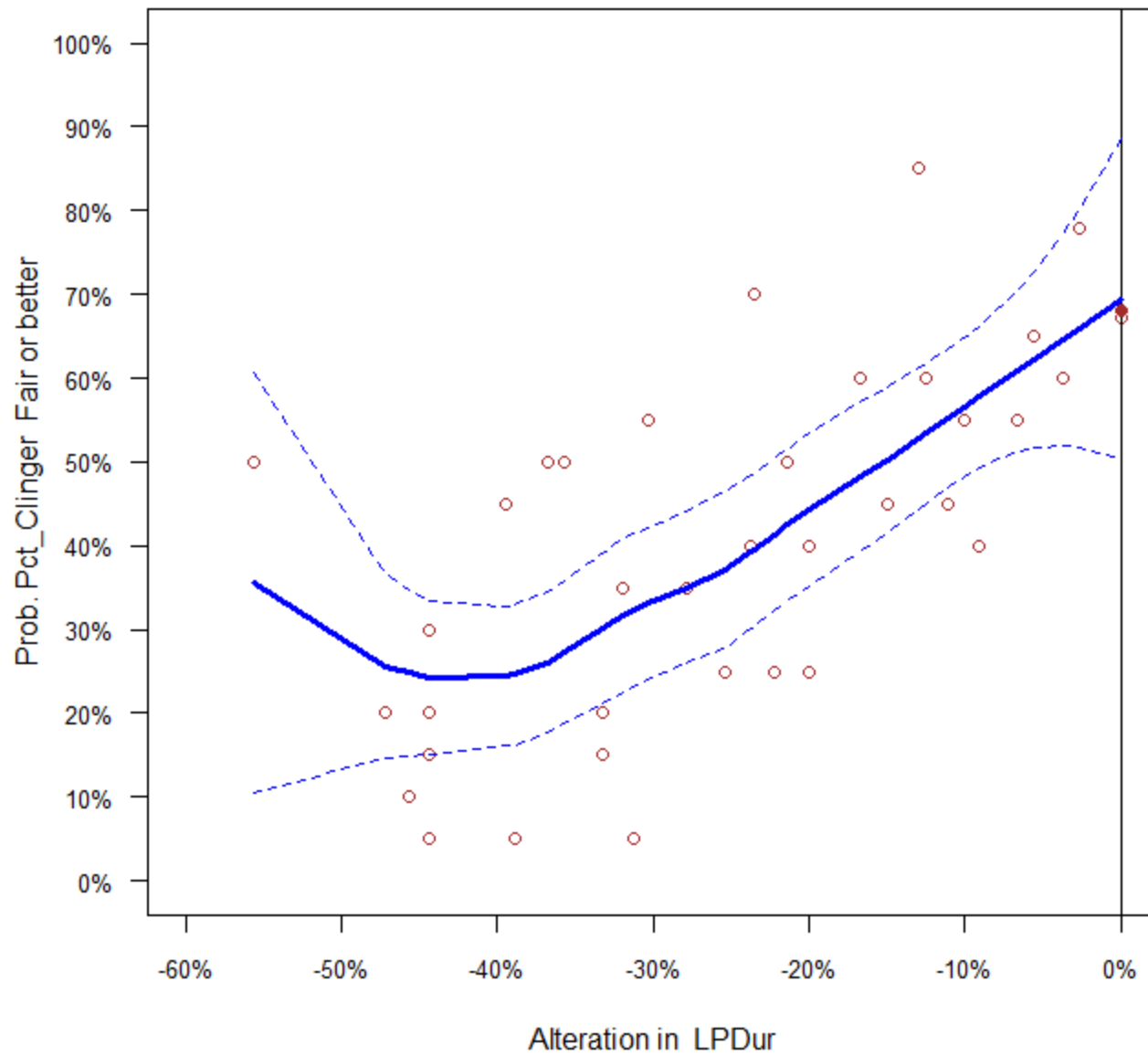
Pct_Chiron ~ Alteration in LPDur



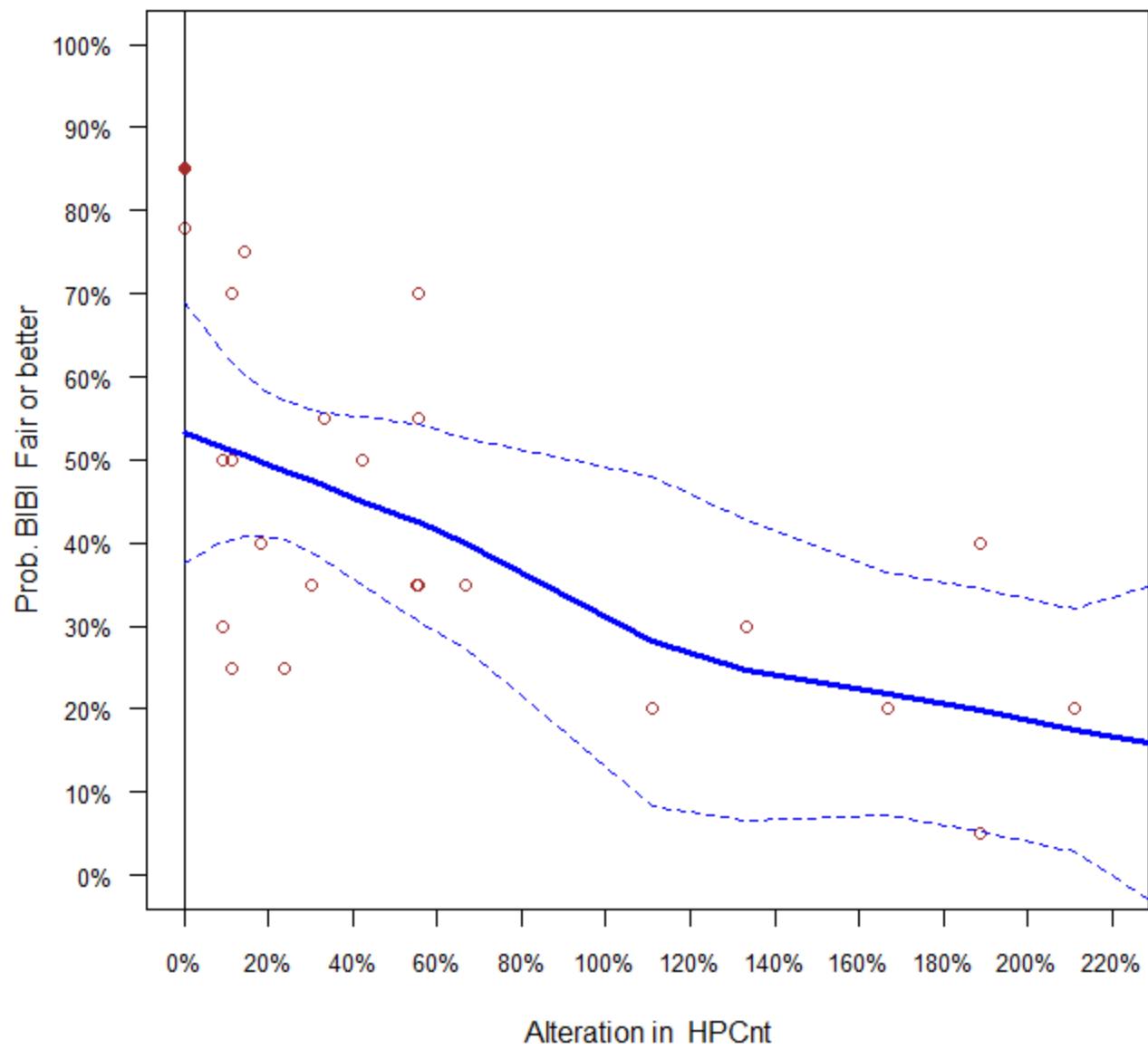
Pct_Scraper ~ Alteration in LPDur



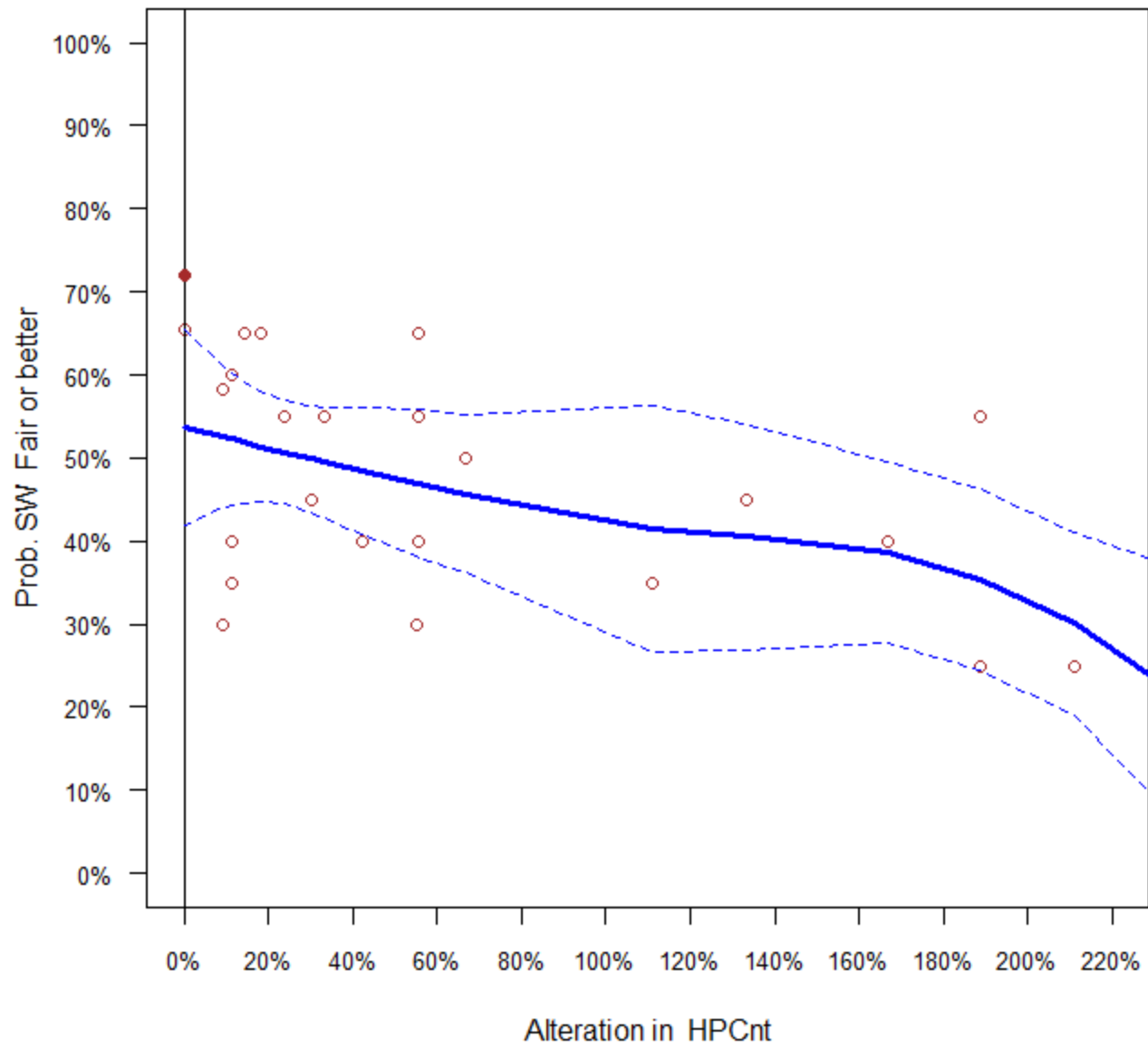
Pct_Clinger ~ Alteration in LPDur



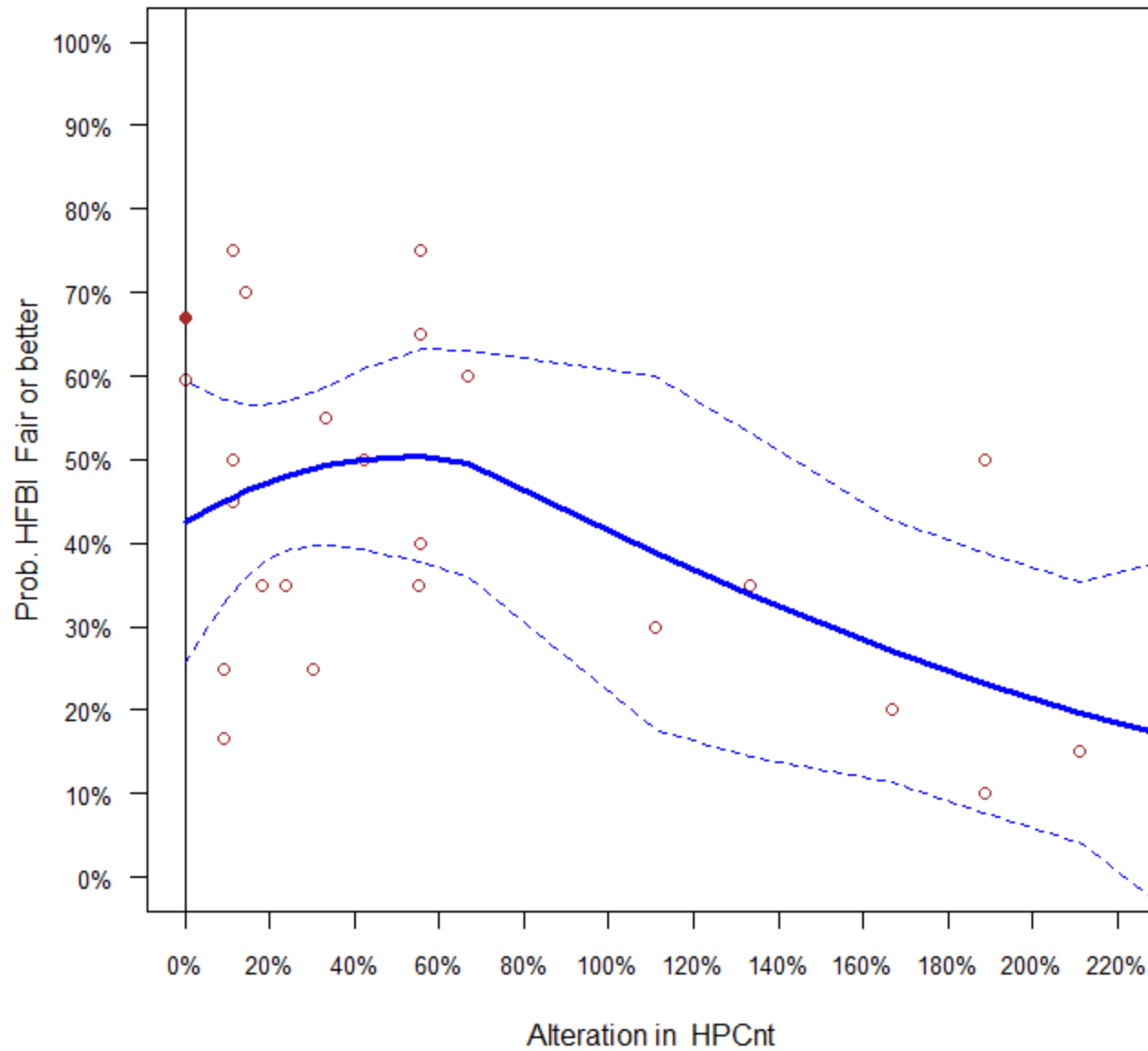
BIBI ~ Alteration in HPCnt



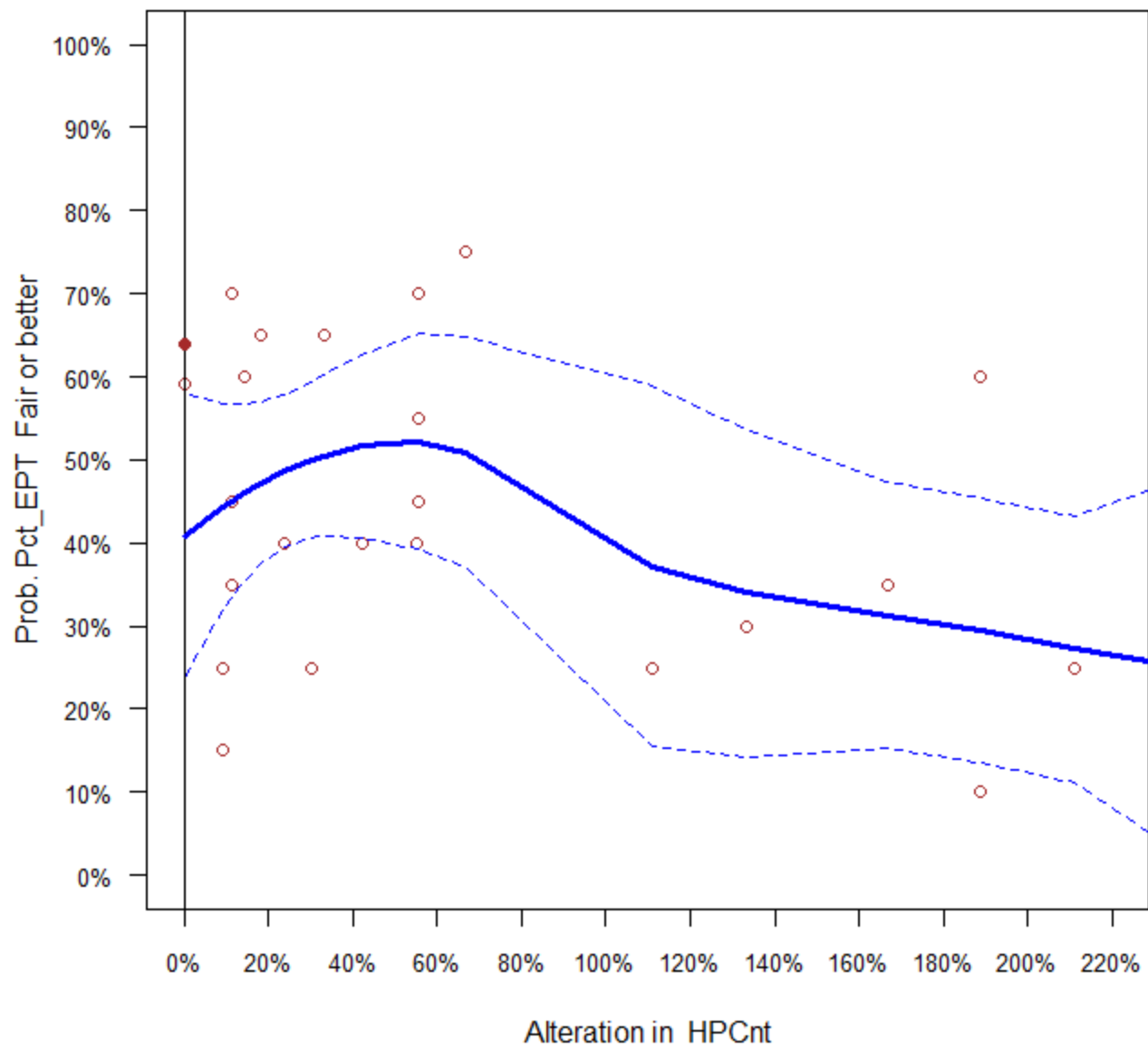
SW ~ Alteration in HPCnt



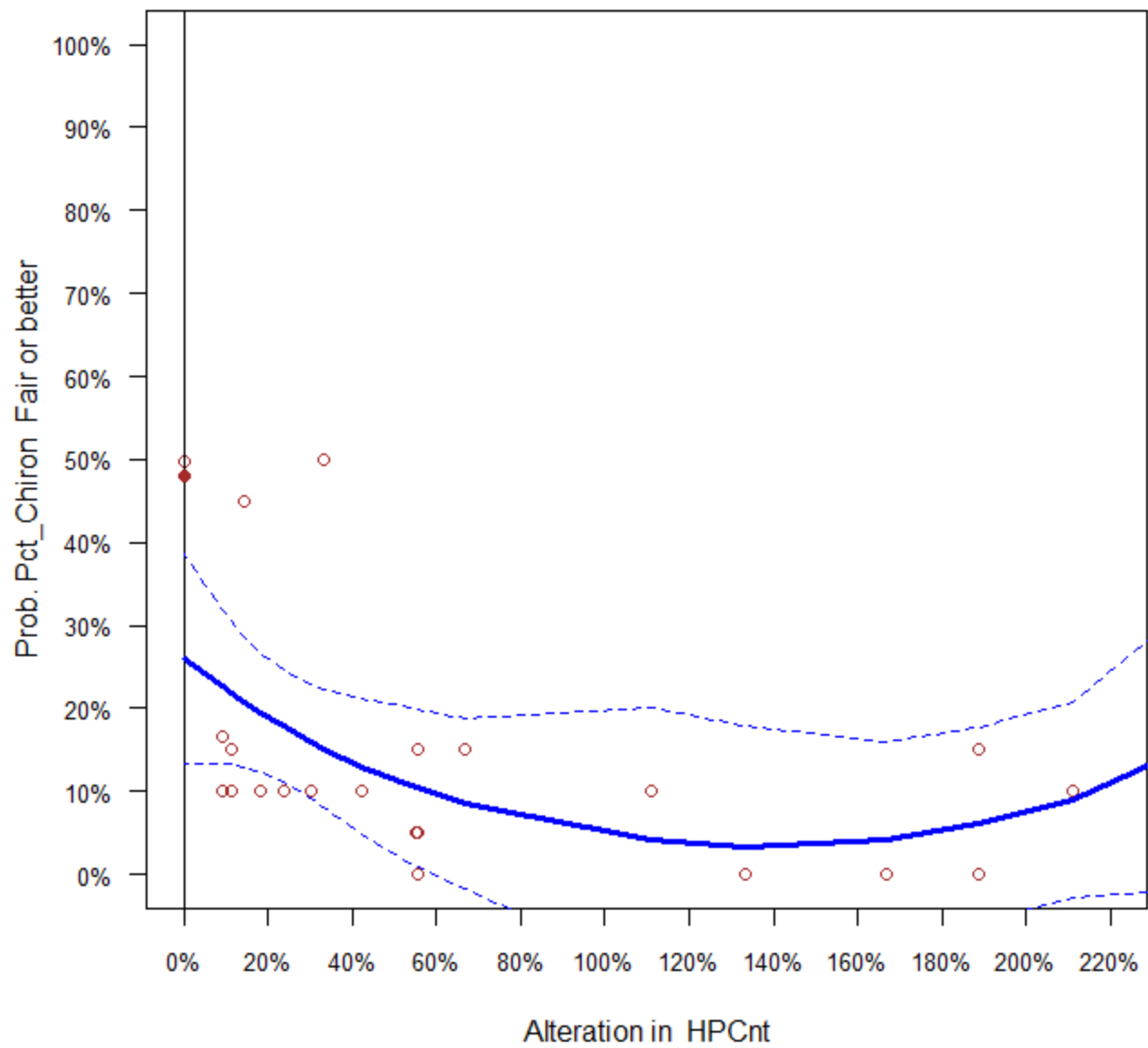
HFBI ~ Alteration in HPCnt



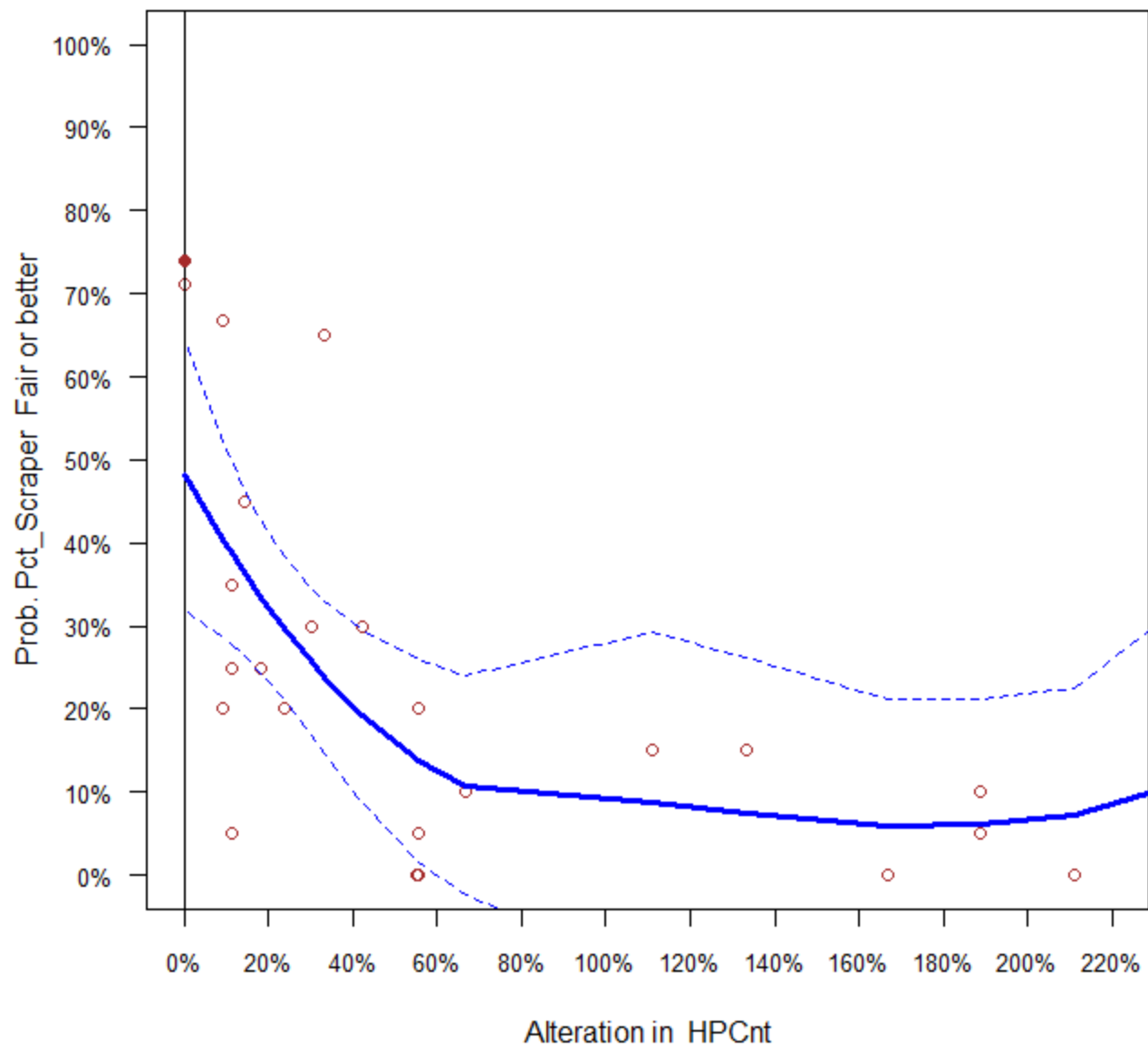
Pct_EPT ~ Alteration in HPCnt



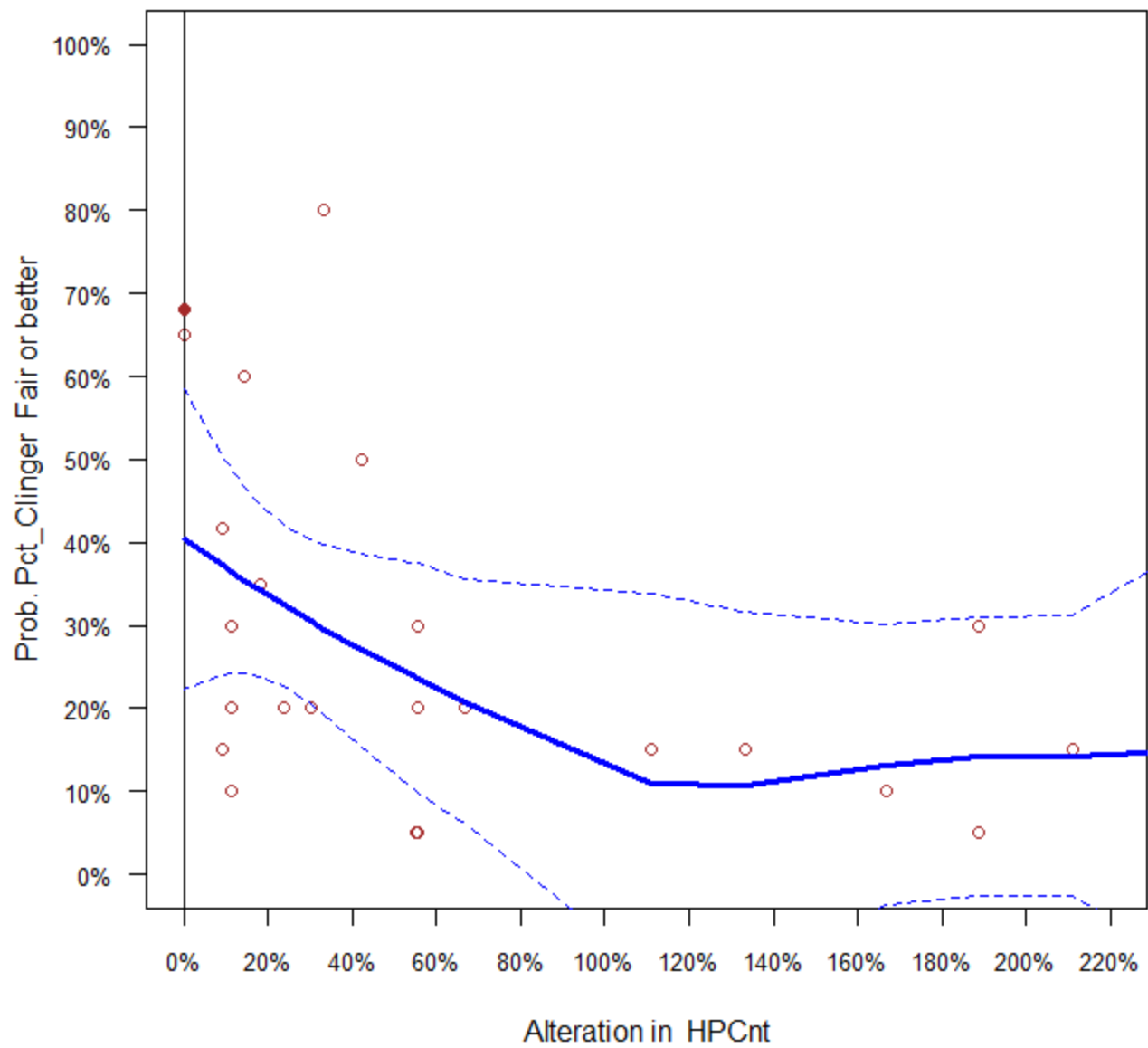
Pct_Chiron ~ Alteration in HPCnt



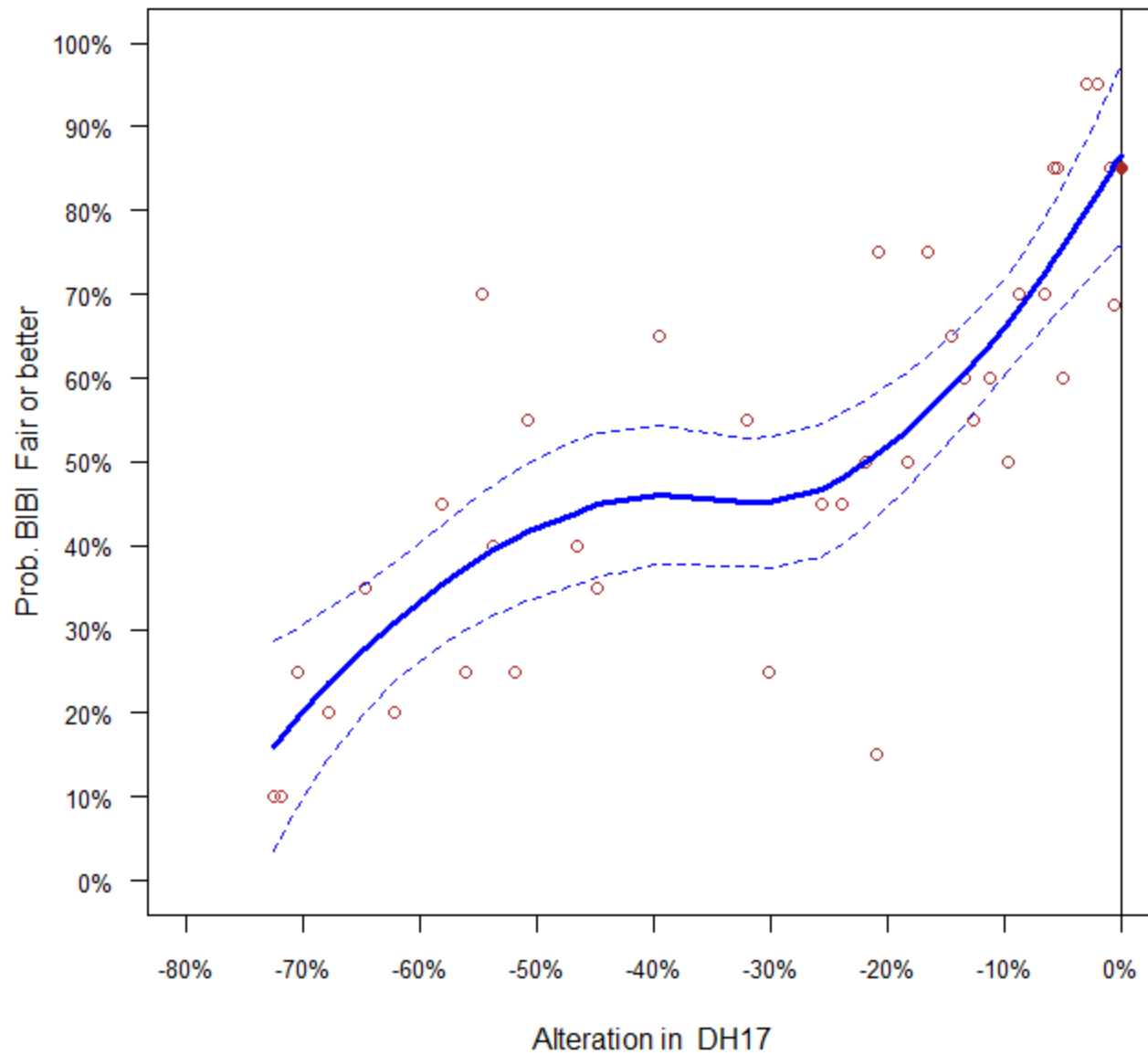
Pct_Scraper ~ Alteration in HPCnt



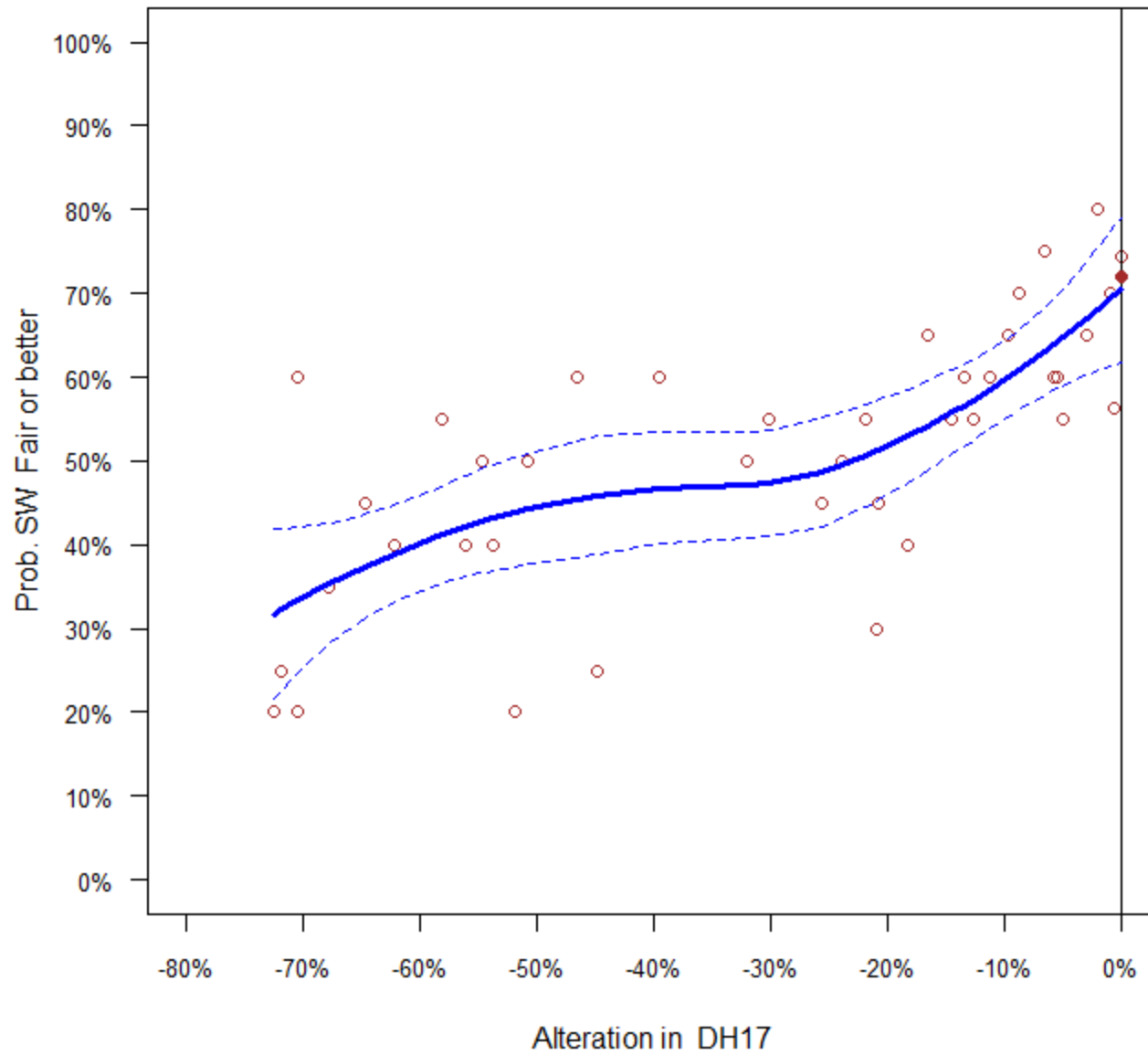
Pct_Clinger ~ Alteration in HPCnt



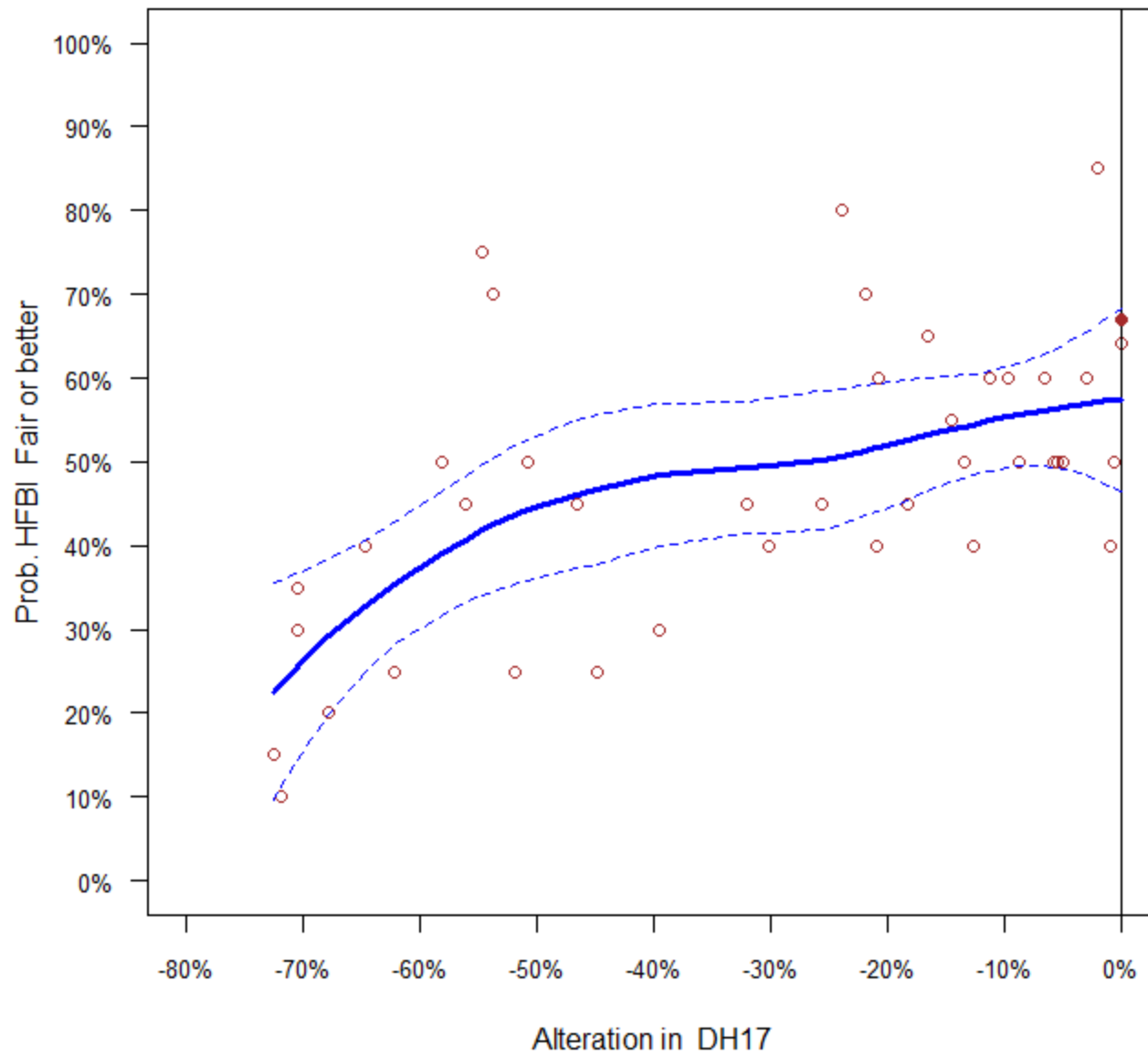
BIBI ~ Alteration in DH17



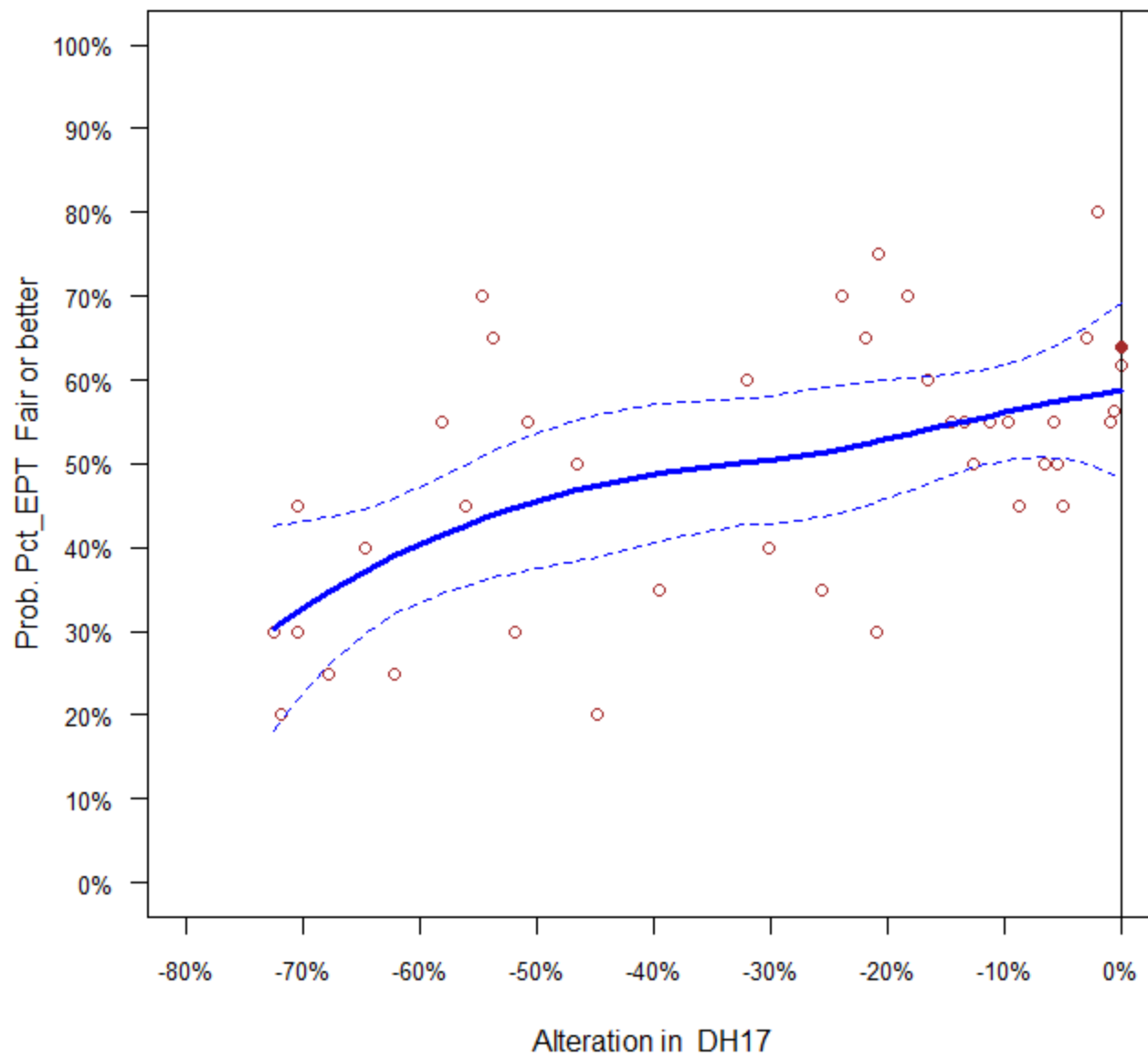
SW ~ Alteration in DH17



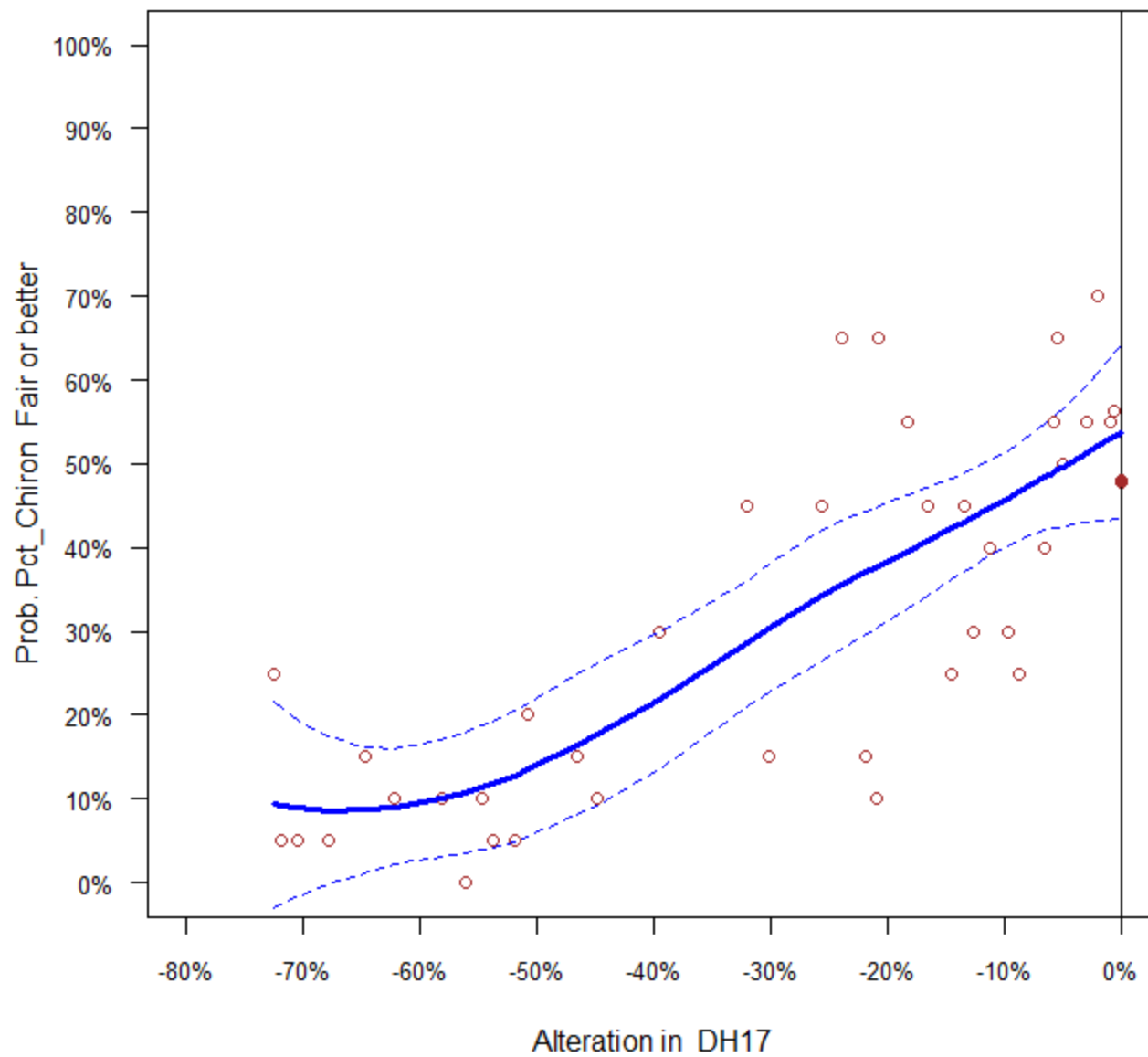
HFBI ~ Alteration in DH17



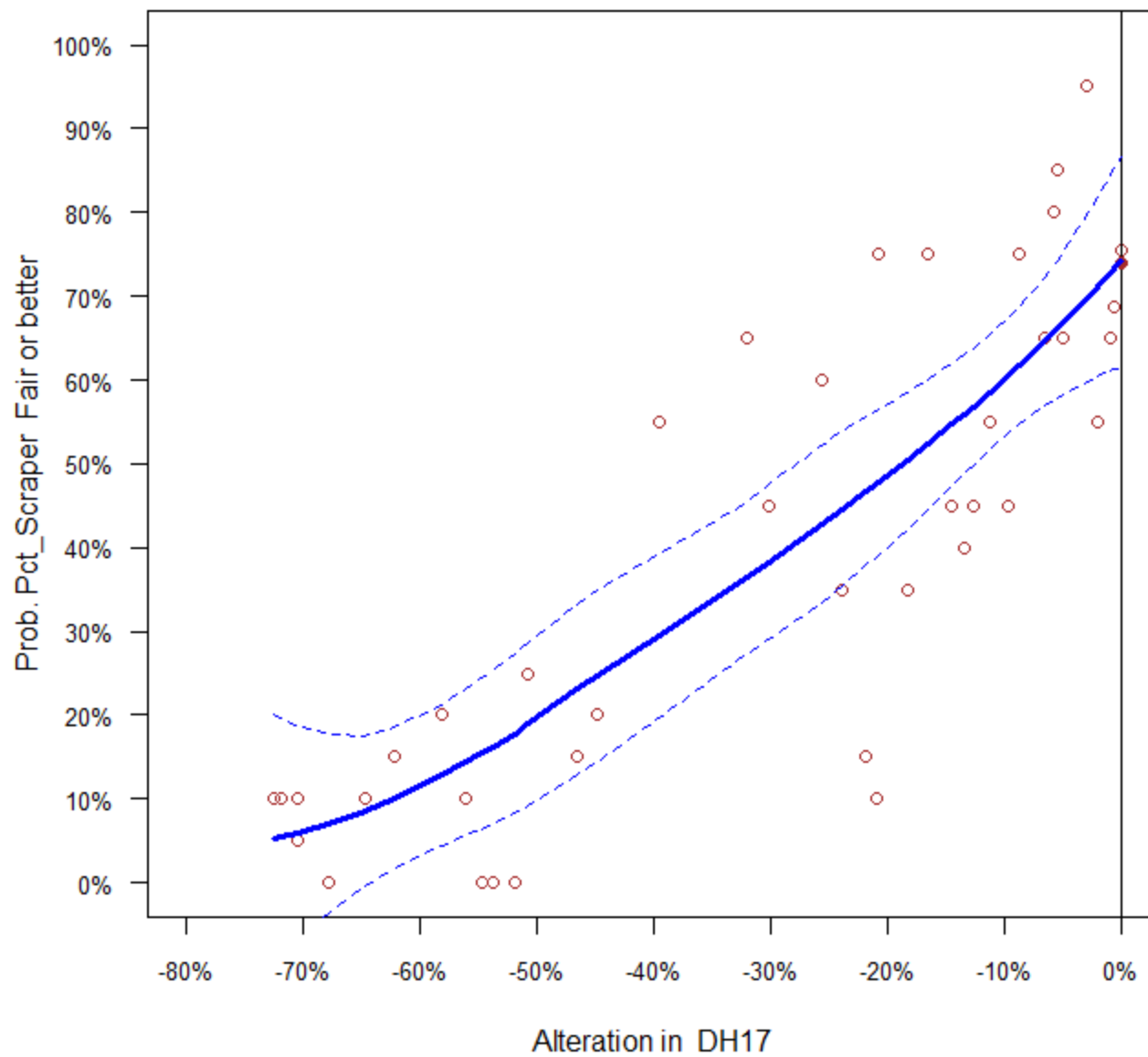
Pct_EPT ~ Alteration in DH17



Pct_Chiron ~ Alteration in DH17



Pct_Scraper ~ Alteration in DH17



Pct_Clinger ~ Alteration in DH17

